

For Research Use Only

# GAT1 Recombinant antibody, PBS Only (Capture)

Catalog Number: 85060-2-PBS



## Basic Information

<b>Catalog Number:</b> 85060-2-PBS	<b>GenBank Accession Number:</b> BC033904	<b>Purification Method:</b> Protein A purification
<b>Size:</b> 100ug, Concentration: 1 mg/ml by Nanodrop;	<b>GeneID (NCBI):</b> 6529	<b>CloneNo.:</b> 242637D11
<b>Source:</b> Rabbit	<b>UNIPROT ID:</b> P30531	
<b>Isotype:</b> IgG	<b>Full Name:</b> solute carrier family 6 (neurotransmitter transporter, GABA), member 1	
<b>Immunogen Catalog Number:</b> AG29712	<b>Calculated MW:</b> 67 kDa	
	<b>Observed MW:</b> 67 kDa	

## Applications

**Tested Applications:**  
WB, Cytometric bead array, Indirect ELISA

**Species Specificity:**  
human, rat

## Product Information

85060-2-PBS targets GAT1 as part of a matched antibody pair:

MP01787-1: 85060-2-PBS capture and 85060-3-PBS detection (validated in Cytometric bead array)

MP01787-2: 85060-2-PBS capture and 85060-1-PBS detection (validated in Cytometric bead array)

Unconjugated rabbit recombinant monoclonal antibody in PBS only (BSA and azide free) storage buffer at a concentration of 1 mg/mL, ready for conjugation. Created using Proteintech's proprietary in-house recombinant technology. Recombinant production enables unrivalled batch-to-batch consistency, easy scale-up, and future security of supply.

This conjugation ready format makes antibodies ideal for use in many applications including: ELISAs, multiplex assays requiring matched pairs, mass cytometry, and multiplex imaging applications. Antibody use should be optimized by the end user for each application and assay.

## Storage

**Storage:**  
Store at -80°C.  
**Storage Buffer:**  
PBS Only

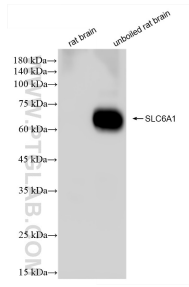
For technical support and original validation data for this product please contact:

T: 1 (888) 4PTGLAB (1-888-478-4522) (toll free  
in USA), or 1(312) 455-8498 (outside USA)

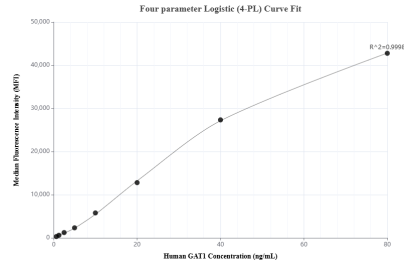
E: [proteintech@ptglab.com](mailto:proteintech@ptglab.com)  
W: [ptglab.com](http://ptglab.com)

**This product is exclusively available under Proteintech Group brand and is not available to purchase from any other manufacturer.**

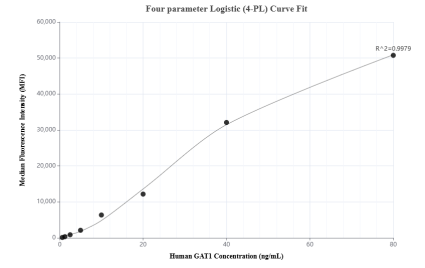
## Selected Validation Data



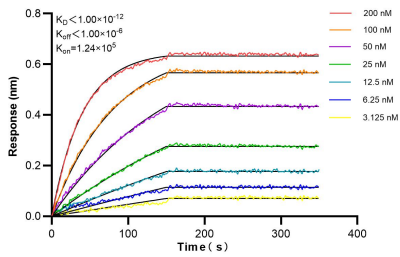
Various lysates were subjected to SDS PAGE followed by western blot with 85060-2-RR (SLC6A1 antibody) at dilution of 1:10000 incubated at room temperature for 1.5 hours. This data was developed using the same antibody clone with 85060-2-PBS in a different storage buffer formulation.



Cytometric bead array standard curve of MP01787-2, GAT1 Recombinant Matched Antibody Pair, PBS Only. Capture antibody: 85060-2-PBS. Detection antibody: 85060-1-PBS. Standard: Ag29712. Range: 0.625-80 ng/mL.



Cytometric bead array standard curve of MP01787-1, GAT1 Recombinant Matched Antibody Pair, PBS Only. Capture antibody: 85060-2-PBS. Detection antibody: 85060-3-PBS. Standard: Ag29712. Range: 0.625-80 ng/mL.



Bi-layer interferometry (BLI) kinetic assays of 85060-2-RR against Human GAT1 were performed. The affinity constant is below 1 pM.