

For Research Use Only

ADSS Recombinant antibody, PBS Only (Detector)

Catalog Number: 85056-3-PBS



Basic Information

Catalog Number: 85056-3-PBS	GenBank Accession Number: BC012356	Purification Method: Protein A purification
Size: 100ug , Concentration: 1 mg/ml by Nanodrop;	GeneID (NCBI): 159	CloneNo.: 242492F12
Source: Rabbit	UNIPROT ID: P30520	
Isotype: IgG	Full Name: adenylosuccinate synthase	
Immunogen Catalog Number: AG9298	Calculated MW: 456 aa, 50 kDa	
	Observed MW: 45 kDa	

Applications

Tested Applications:
WB, Cytometric bead array, Indirect ELISA

Species Specificity:
human, mouse, rat

Product Information

85056-3-PBS targets ADSS as part of a matched antibody pair:

MP01793-1: 85056-1-PBS capture and 85056-3-PBS detection (validated in Cytometric bead array)

MP01793-2: 85056-2-PBS capture and 85056-3-PBS detection (validated in Cytometric bead array)

Unconjugated rabbit recombinant monoclonal antibody in PBS only (BSA and azide free) storage buffer at a concentration of 1 mg/mL, ready for conjugation. Created using Proteintech's proprietary in-house recombinant technology. Recombinant production enables unrivalled batch-to-batch consistency, easy scale-up, and future security of supply.

This conjugation ready format makes antibodies ideal for use in many applications including: ELISAs, multiplex assays requiring matched pairs, mass cytometry, and multiplex imaging applications. Antibody use should be optimized by the end user for each application and assay.

Storage

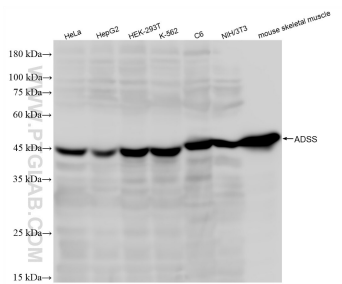
Storage:
Store at -80°C.

Storage Buffer:
PBS Only

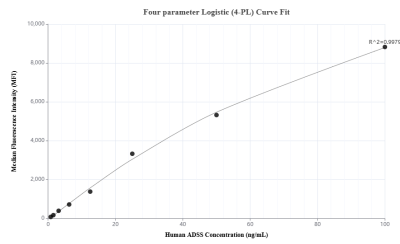
For technical support and original validation data for this product please contact:
T: 1 (888) 4PTGLAB (1-888-478-4522) (toll free in USA), or 1(312) 455-8498 (outside USA)
E: proteintech@ptglab.com
W: ptglab.com

This product is exclusively available under Proteintech Group brand and is not available to purchase from any other manufacturer.

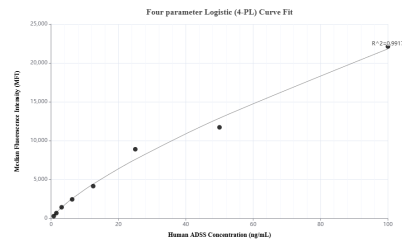
Selected Validation Data



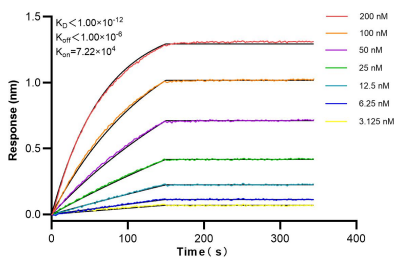
Various lysates were subjected to SDS PAGE followed by western blot with 85056-3-RR (ADSS antibody) at dilution of 1:10000 incubated at room temperature for 1.5 hours. This data was developed using the same antibody clone with 85056-3-PBS in a different storage buffer formulation.



Cytometric bead array standard curve of MP01793-2, ADSS Recombinant Matched Antibody Pair, PBS Only. Capture antibody: 85056-2-PBS. Detection antibody: 85056-3-PBS. Standard: Ag9298. Range: 0.781-100 ng/mL.



Cytometric bead array standard curve of MP01793-1, ADSS Recombinant Matched Antibody Pair, PBS Only. Capture antibody: 85056-1-PBS. Detection antibody: 85056-3-PBS. Standard: Ag9298. Range: 0.781-100 ng/mL.



Biolayer interferometry (BLI) kinetic assays of 85056-3-RR against Human ADSS were performed. The affinity constant is below 1 pM.