

For Research Use Only

ERBB3 Recombinant antibody, PBS Only (Detector)

Catalog Number: 85053-1-PBS



Basic Information

Catalog Number: 85053-1-PBS	GenBank Accession Number: BC082992	Purification Method: Protein A purification
Size: 100ug, Concentration: 1 mg/ml by Nanodrop;	GeneID (NCBI): 2065	CloneNo.: 242605B8
Source: Rabbit	UNIPROT ID: P21860	
Isotype: IgG	Full Name: v-erb-b2 erythroblastic leukemia viral oncogene homolog 3 (avian)	

Applications

Tested Applications:
Cytometric bead array, Sandwich ELISA, Indirect ELISA,
Sample test

Species Specificity:
human

Product Information

85053-1-PBS targets ERBB3 as part of a matched antibody pair.

MP01777-1: 85053-2-PBS capture and 85053-1-PBS detection (validated in Cytometric bead array, Sandwich ELISA)

MP01777-2: 85053-3-PBS capture and 85053-1-PBS detection (validated in Cytometric bead array)

Unconjugated rabbit recombinant monoclonal antibody in PBS only (BSA and azide free) storage buffer at a concentration of 1 mg/mL, ready for conjugation. Created using Proteintech's proprietary in-house recombinant technology. Recombinant production enables unrivalled batch-to-batch consistency, easy scale-up, and future security of supply.

This conjugation ready format makes antibodies ideal for use in many applications including: ELISAs, multiplex assays requiring matched pairs, mass cytometry, and multiplex imaging applications. Antibody use should be optimized by the end user for each application and assay.

Storage

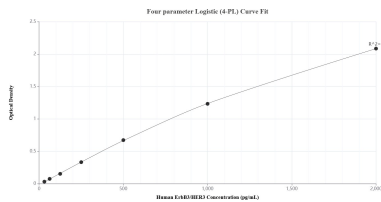
Storage:
Store at -80°C.

Storage Buffer:
PBS Only

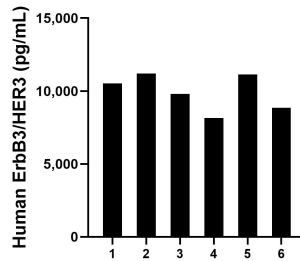
For technical support and original validation data for this product please contact:
T: 1 (888) 4PTGLAB (1-888-478-4522) (toll free in USA), or 1(312) 455-8498 (outside USA) E: proteintech@ptglab.com
W: ptglab.com

This product is exclusively available under Proteintech Group brand and is not available to purchase from any other manufacturer.

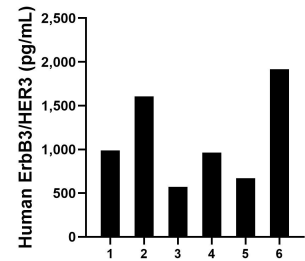
Selected Validation Data



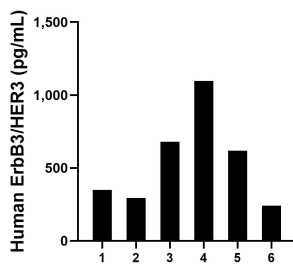
Sandwich ELISA standard curve of MP01777-1, Human ErbB3/HER3 Recombinant Matched Antibody Pair - PBS only. 85053-2-PBS was coated to a plate as the capture antibody and incubated with serial dilutions of standard Eg2245. 85053-1-PBS was HRP conjugated as the detection antibody. Range: 31.3-2000 pg/mL



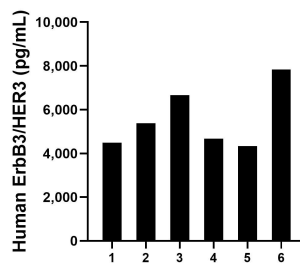
Serum of six individual healthy human donors was measured. The ErbB3/HER3 concentration of detected samples was determined to be 9,941.5 pg/mL with a range of 8,149.4-11,207.9 pg/mL



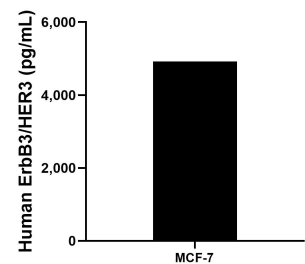
Saliva of six individual healthy human donors was measured. The ErbB3/HER3 concentration of detected samples was determined to be 1,118.6 pg/mL with a range of 572.4-1,916.6 pg/mL



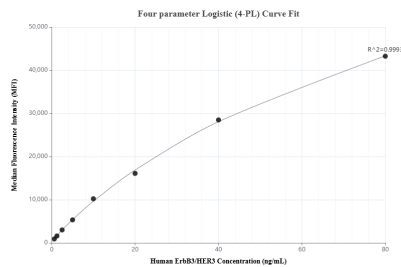
Urine of six individual healthy human donors was measured. The ErbB3/HER3 concentration of detected samples was determined to be 546.4 pg/mL with a range of 240.4-1,095.7 pg/mL



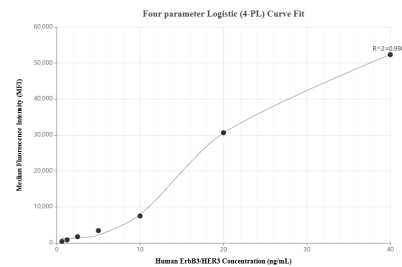
Human milk of six individual healthy human donors was measured. The ErbB3/HER3 concentration of detected samples was determined to be 5,561.2 pg/mL with a range of 4,339.8-7,839.0 pg/mL



MCF-7 cells were cultured in DMEM supplemented with 10% fetal bovine serum, 2.5 mM L-glutamine, 100 U/mL penicillin, and 100 µg/mL streptomycin sulfate. An aliquot of the cell culture supernatant was removed, assayed for human ErbB3/HER3, and measured 4,918.4 pg/mL



Cytometric bead array standard curve of MP01777-1, ErbB3/HER3 Recombinant Matched Antibody Pair, PBS Only. Capture antibody: 85053-2-PBS. Detection antibody: 85053-1-PBS. Standard: Eg2245. Range: 0.625-80 ng/mL



Cytometric bead array standard curve of MP01777-2, ErbB3/HER3 Recombinant Matched Antibody Pair, PBS Only. Capture antibody: 85053-3-PBS. Detection antibody: 85053-1-PBS. Standard: Eg2245. Range: 0.625-40 ng/mL