

For Research Use Only

# SP3 Recombinant antibody, PBS Only (Capture)

Catalog Number:85050-2-PBS



## Basic Information

<b>Catalog Number:</b> 85050-2-PBS	<b>GenBank Accession Number:</b> BC126414	<b>Purification Method:</b> Protein A purification
<b>Size:</b> 100ug , Concentration: 1 mg/ml by Nanodrop;	<b>GeneID (NCBI):</b> 6670	<b>CloneNo.:</b> 242556C7
<b>Source:</b> Rabbit	<b>UNIPROT ID:</b> Q02447	
<b>Isotype:</b> IgG	<b>Full Name:</b> Sp3 transcription factor	
<b>Immunogen Catalog Number:</b> AG25082	<b>Calculated MW:</b> 781 aa, 82 kDa	

## Applications

**Tested Applications:**  
Cytometric bead array, Sandwich ELISA, Indirect ELISA, Sample test

**Species Specificity:**  
human

## Product Information

85050-2-PBS targets SP3 as part of a matched antibody pair:

MP01797-2: 85050-2-PBS capture and 85050-3-PBS detection (validated in Cytometric bead array)

MP01797-3: 85050-2-PBS capture and 85050-4-PBS detection (validated in Sandwich ELISA)

Unconjugated rabbit recombinant monoclonal antibody in PBS only (BSA and azide free) storage buffer at a concentration of 1 mg/mL, ready for conjugation. Created using Proteintech's proprietary in-house recombinant technology. Recombinant production enables unrivalled batch-to-batch consistency, easy scale-up, and future security of supply.

This conjugation ready format makes antibodies ideal for use in many applications including: ELISAs, multiplex assays requiring matched pairs, mass cytometry, and multiplex imaging applications. Antibody use should be optimized by the end user for each application and assay.

## Storage

**Storage:**  
Store at -80°C.  
**Storage Buffer:**  
PBS Only

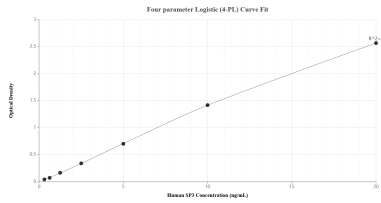
For technical support and original validation data for this product please contact:

T: 1 (888) 4PTGLAB (1-888-478-4522) (toll free in USA), or 1(312) 455-8498 (outside USA)

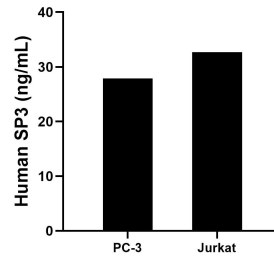
E: [proteintech@ptglab.com](mailto:proteintech@ptglab.com)  
W: [ptglab.com](http://ptglab.com)

**This product is exclusively available under Proteintech Group brand and is not available to purchase from any other manufacturer.**

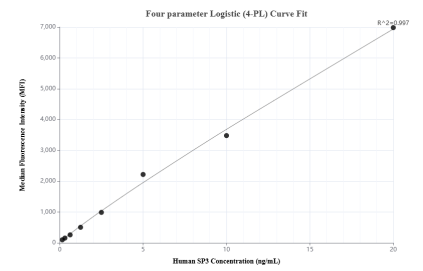
## Selected Validation Data



Sandwich ELISA standard curve of MP01797-3, Human SP3 Recombinant Matched Antibody Pair - PBS only. 85050-2-PBS was coated to a plate as the capture antibody and incubated with serial dilutions of standard Ag25082. 85050-4-PBS was HRP conjugated as the detection antibody. Range: 0.313-20 ng/mL



The mean SP3 concentration was determined to be 27.89 ng/mL in PC-3 cell extract based on a 2.50 mg/mL extract load and 32.69 ng/mL in Jurkat cell extract based on a 2.00 mg/mL extract load.



Cytometric bead array standard curve of MP01797-2, SP3 Recombinant Matched Antibody Pair, PBS Only. Capture antibody: 85050-2-PBS. Detection antibody: 85050-3-PBS. Standard: Ag25082. Range: 0.156-20 ng/mL