

For Research Use Only

# PRPH2 Recombinant antibody

Catalog Number: 85043-1-RR



## Basic Information

Catalog Number: 85043-1-RR	GenBank Accession Number: BC074720	Purification Method: Protein A purification
Size: 100ul , Concentration: 1000 µg/ml by Nanodrop;	GeneID (NCBI): 5961	CloneNo.: 242170F4
Source: Rabbit	UNIPROT ID: P23942	Recommended Dilutions: WB 1:5000-1:50000 IHC 1:200-1:800 IF-P 1:400-1:1600
Isotype: IgG	Full Name: peripherin 2 (retinal degeneration, slow)	
Immunogen Catalog Number: AG12555	Calculated MW: 346 aa, 39 kDa	
	Observed MW: 30-40 kDa	

## Applications

Tested Applications: WB, IHC, IF-P, ELISA	Positive Controls:
Species Specificity: human, mouse, rat	WB : mouse eye tissue, rat eye tissue
<b>Note-IHC: suggested antigen retrieval with TE buffer pH 9.0; (*) Alternatively, antigen retrieval may be performed with citrate buffer pH 6.0</b>	IHC : mouse eye tissue, IF-P : mouse eye tissue,

## Background Information

Peripherin-2 (PRPH2), also known as retinal degeneration slow protein (RDS), is a photoreceptor-specific tetraspanin protein implicated in outer segment disk morphogenesis. It may function as an adhesion molecule involved in the stabilization and compaction of outer segment disks or in the maintenance of the curvature of the rim. Mutations in peripherin-2 are responsible for various retinal degenerative diseases including autosomal dominant retinitis pigmentosa (ADRP).

## Storage

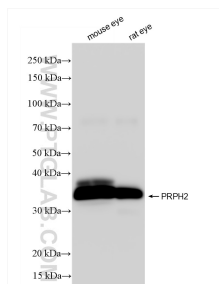
Storage:  
Store at -20°C. Stable for one year after shipment.  
Storage Buffer:  
PBS with 0.02% sodium azide and 50% glycerol, pH7.3  
Aliquoting is unnecessary for -20°C storage

\*\*\* 20ul sizes contain 0.1% BSA

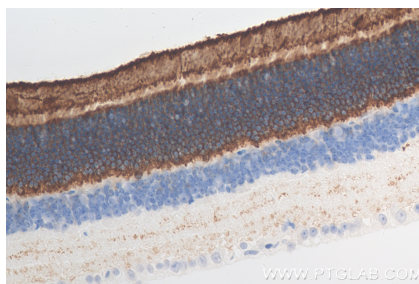
For technical support and original validation data for this product please contact:  
T: 1 (888) 4PTGLAB (1-888-478-4522) (toll free in USA), or 1(312) 455-8498 (outside USA)  
E: [proteintech@ptglab.com](mailto:proteintech@ptglab.com)  
W: [ptglab.com](http://ptglab.com)

This product is exclusively available under Proteintech Group brand and is not available to purchase from any other manufacturer.

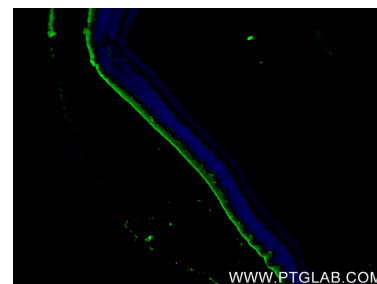
## Selected Validation Data



Various lysates were subjected to SDS PAGE followed by western blot with 85043-1-RR (PRPH2 antibody) at dilution of 1:12000 incubated at room temperature for 1.5 hours.



Immunohistochemical analysis of paraffin-embedded mouse eye tissue slide using 85043-1-RR (PRPH2 antibody) at dilution of 1:400 (under 40x lens). Heat mediated antigen retrieval with Tris-EDTA buffer (pH 9.0).



Immunofluorescent analysis of (4% PFA) fixed paraffin-embedded mouse eye tissue using PRPH2 antibody (85043-1-RR, Clone: 242170F4) at dilution of 1:800 and CoraLite@488-Conjugated Goat Anti-Rabbit IgG(H+L) (SA00013-2). Heat mediated antigen retrieval with Tris-EDTA buffer (pH 9.0).