

For Research Use Only

EGFR Recombinant antibody, PBS Only (Capture/Detector)

Catalog Number:85039-3-PBS



Basic Information

Catalog Number: 85039-3-PBS	GenBank Accession Number: NM_005228.5	Purification Method: Protein A purification
Size: 100ug, Concentration: 1 mg/ml by Nanodrop;	GeneID (NCBI): 1956	CloneNo.: 242684F3
Source: Rabbit	UNIPROT ID: P00533	
Isotype: IgG	Full Name: epidermal growth factor receptor (erythroblastic leukemia viral (v-erb-b) oncogene homolog, avian)	
	Calculated MW: 134kd	

Applications

Tested Applications:
Cytometric bead array, Sandwich ELISA, Indirect ELISA, Sample test

Species Specificity:
human

Product Information

85039-3-PBS targets EGFR as part of a matched antibody pair:

MP01744-1: 85039-3-PBS capture and 85039-2-PBS detection (validated in Cytometric bead array)

MP01744-2: 85039-3-PBS capture and 85039-1-PBS detection (validated in Cytometric bead array)

MP01744-3: 85039-1-PBS capture and 85039-3-PBS detection (validated in Sandwich ELISA)

Unconjugated rabbit recombinant monoclonal antibody in PBS only (BSA and azide free) storage buffer at a concentration of 1 mg/mL, ready for conjugation. Created using Proteintech's proprietary in-house recombinant technology. Recombinant production enables unrivalled batch-to-batch consistency, easy scale-up, and future security of supply.

This conjugation ready format makes antibodies ideal for use in many applications including: ELISAs, multiplex assays requiring matched pairs, mass cytometry, and multiplex imaging applications. Antibody use should be optimized by the end user for each application and assay.

Storage

Storage:
Store at -80°C.
Storage Buffer:
PBS Only

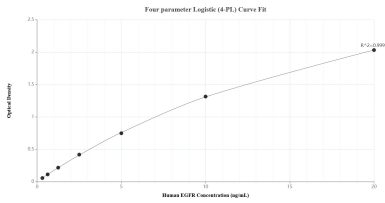
For technical support and original validation data for this product please contact:

T: 1 (888) 4PTGLAB (1-888-478-4522) (toll free in USA), or 1(312) 455-8498 (outside USA)

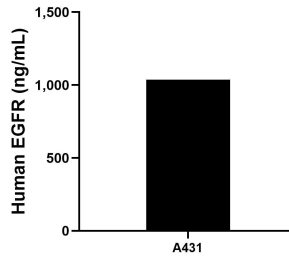
E: proteintech@ptglab.com
W: ptglab.com

This product is exclusively available under Proteintech Group brand and is not available to purchase from any other manufacturer.

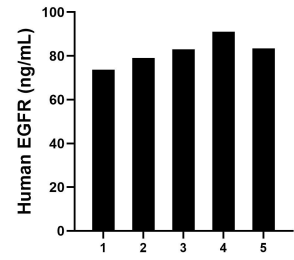
Selected Validation Data



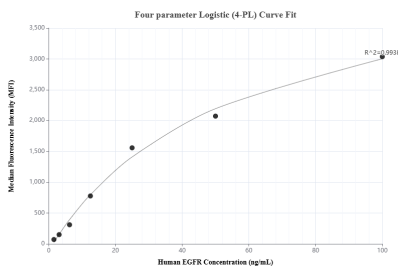
Sandwich ELISA standard curve of MP01744-3, Human EGFR Recombinant Matched Antibody Pair - PBS only. 85039-1-PBS was coated to a plate as the capture antibody and incubated with serial dilutions of standard Eg0204. 85039-3-PBS was HRP conjugated as the detection antibody. Range: 0.313-20 ng/mL



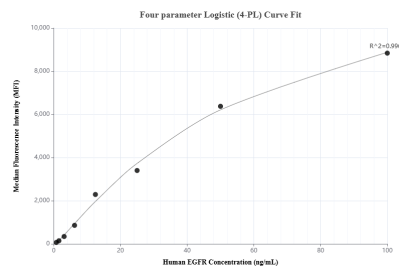
A431 cells were cultured in DMEM supplemented with 10% fetal bovine serum, 2.5 mM L-glutamine, 100 U/mL penicillin, and 100 µg/mL streptomycin sulfate. An aliquot of the cell culture supernate was removed, assayed for human EGFR, and measured 1,036.46 ng/mL



Serum of five individual healthy human donors was measured. The EGFR concentration of detected samples was determined to be 82.02 ng/mL with a range of 73.67-90.99 ng/mL



Cytometric bead array standard curve of MP01744-2, EGFR Recombinant Matched Antibody Pair, PBS Only. Capture antibody: 85039-3-PBS. Detection antibody: 85039-1-PBS. Standard: Eg0204. Range: 1.563-100 ng/mL



Cytometric bead array standard curve of MP01744-1, EGFR Recombinant Matched Antibody Pair, PBS Only. Capture antibody: 85039-3-PBS. Detection antibody: 85039-2-PBS. Standard: Eg0204. Range: 0.781-100 ng/mL