

For Research Use Only

# EGFR Recombinant antibody, PBS Only (Capture/Detector)

Catalog Number:85039-1-PBS



## Basic Information

Catalog Number:

85039-1-PBS

Size:

100ug, Concentration: 1 mg/ml by  
Nanodrop;

Source:

Rabbit

Isotype:

IgG

GenBank Accession Number:

NM\_005228.5

GeneID (NCBI):

1956

UNIPROT ID:

P00533

Full Name:

epidermal growth factor receptor  
(erythroblastic leukemia viral (v-erb-  
b) oncogene homolog, avian)

Calculated MW:

134kd

Purification Method:

Protein A purification

CloneNo.:

242684E4

## Applications

Tested Applications:

Cytometric bead array, Sandwich ELISA, Indirect ELISA,  
Sample test

Species Specificity:

human

## Product Information

85039-1-PBS targets EGFR as part of a matched antibody pair:

MP01744-2: 85039-3-PBS capture and 85039-1-PBS detection (validated in Cytometric bead array)

MP01744-3: 85039-1-PBS capture and 85039-3-PBS detection (validated in Sandwich ELISA)

Unconjugated rabbit recombinant monoclonal antibody in PBS only (BSA and azide free) storage buffer at a concentration of 1 mg/mL, ready for conjugation. Created using Proteintech's proprietary in-house recombinant technology. Recombinant production enables unrivalled batch-to-batch consistency, easy scale-up, and future security of supply.

This conjugation ready format makes antibodies ideal for use in many applications including: ELISAs, multiplex assays requiring matched pairs, mass cytometry, and multiplex imaging applications. Antibody use should be optimized by the end user for each application and assay.

## Storage

Storage:

Store at -80°C.

Storage Buffer:

PBS Only

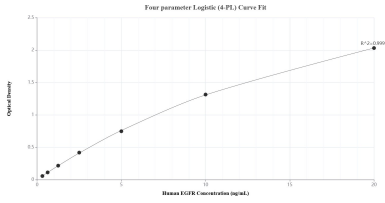
For technical support and original validation data for this product please contact:

T: 1 (888) 4PTGLAB (1-888-478-4522) (toll free  
in USA), or 1(312) 455-8498 (outside USA)

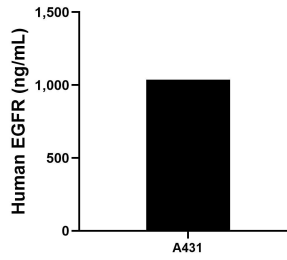
E: [proteintech@ptglab.com](mailto:proteintech@ptglab.com)  
W: [ptglab.com](http://ptglab.com)

**This product is exclusively available under Proteintech Group brand and is not available to purchase from any other manufacturer.**

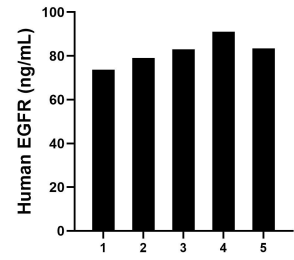
## Selected Validation Data



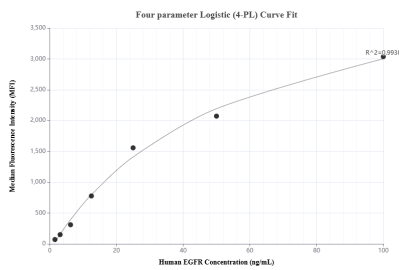
Sandwich ELISA standard curve of MP01744-3, Human EGFR Recombinant Matched Antibody Pair - PBS only. 85039-1-PBS was coated to a plate as the capture antibody and incubated with serial dilutions of standard Eg0204. 85039-3-PBS was HRP conjugated as the detection antibody. Range: 0.313-20 ng/mL



A431 cells were cultured in DMEM supplemented with 10% fetal bovine serum, 2.5 mM L-glutamine, 100 U/mL penicillin, and 100 µg/mL streptomycin sulfate. An aliquot of the cell culture supernate was removed, assayed for human EGFR, and measured 1,036.46 ng/mL



Serum of five individual healthy human donors was measured. The EGFR concentration of detected samples was determined to be 82.02 ng/mL with a range of 73.67-90.99 ng/mL



Cytometric bead array standard curve of MP01744-2, EGFR Recombinant Matched Antibody Pair, PBS Only. Capture antibody: 85039-3-PBS. Detection antibody: 85039-1-PBS. Standard: Eg0204. Range: 1.563-100 ng/mL