

For Research Use Only

NME1 Recombinant monoclonal antibody, PBS Only

Catalog Number: 85038-7-PBS



Basic Information

Catalog Number: 85038-7-PBS	GenBank Accession Number: BC018994	Purification Method: Protein A purification
Size: 100ug , Concentration: 1 mg/ml by Nanodrop;	GeneID (NCBI): 4830	CloneNo.: 242670D5
Source: Rabbit	UNIPROT ID: P15531	
Isotype: IgG	Full Name: non-metastatic cells 1, protein (NM23A) expressed in	
Immunogen Catalog Number: AG1548	Calculated MW: 17 kDa	
	Observed MW: 16-20 kDa	

Applications

Tested Applications:
WB, IF/ICC, FC (Intra), Indirect ELISA

Species Specificity:
human, mouse, rat

Background Information

NME1 is also named as NDPKA(Nucleoside diphosphate kinase A), NM23(Metastasis inhibition factor nm23),GAAD(Granzyme A-activated DNase) and belongs to the NDK family.It is a major role in the synthesis of nucleoside triphosphates other than ATP and required for neural development including neural patterning and cell fate determination. It has 3 isoforms produced by alternative splicing. Refer to the epitope and protein detection, this antibody specifically recognizes NME1.

Storage

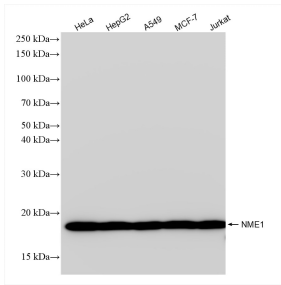
Storage:
Store at -80°C.

Storage Buffer:
PBS only, pH7.3

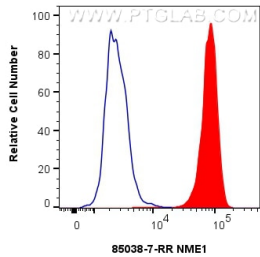
For technical support and original validation data for this product please contact:
T: 1 (888) 4PTGLAB (1-888-478-4522) (toll free in USA), or 1(312) 455-8498 (outside USA)
E: proteintech@ptglab.com
W: ptglab.com

This product is exclusively available under Proteintech Group brand and is not available to purchase from any other manufacturer.

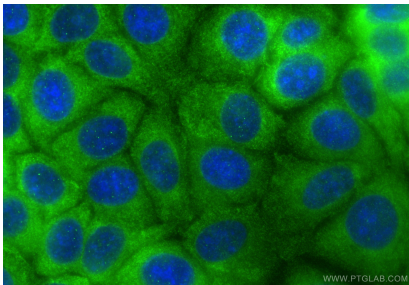
Selected Validation Data



Various lysates were subjected to SDS PAGE followed by western blot with 85038-7-RR (NME1 antibody) at dilution of 1:10000 incubated at room temperature for 1.5 hours. This data was developed using the same antibody clone with 85038-7-PBS in a different storage buffer formulation.



1x10⁶ HepG2 cells were intracellularly stained with 0.25 ug NME1 Recombinant antibody (85038-7-RR, Clone:242670D5) and CoraLite®488-Conjugated Goat Anti-Rabbit IgG(H+L) (SA00013-2)(red), or 0.25 ug Rabbit IgG Isotype Control RecAb (98136-1-RR, Clone: 240953C9) (blue). Cells were fixed with 4% PFA and permeabilized with Flow Cytometry Perm Buffer. This data was developed using the same antibody clone with 85038-7-PBS in a different storage



Immunofluorescent analysis of (-20°C Methanol) fixed MCF-7 cells using NME1 antibody (85038-7-RR, Clone: 242670D5) at dilution of 1:500 and CoraLite®488-Conjugated Goat Anti-Rabbit IgG(H+L) (SA00013-2). This data was developed using the same antibody clone with 85038-7-PBS in a different storage buffer formulation.