

For Research Use Only

NME1 Recombinant antibody, PBS Only (Detector)

Catalog Number:85038-4-PBS



Basic Information

Catalog Number: 85038-4-PBS	GenBank Accession Number: BC018994	Purification Method: Protein A purification
Size: 100ug , Concentration: 1 mg/ml by Nanodrop;	GeneID (NCBI): 4830	CloneNo.: 242670B7
Source: Rabbit	UNIPROT ID: P15531	
Isotype: IgG	Full Name: non-metastatic cells 1, protein (NM23A) expressed in	
Immunogen Catalog Number: AG1548	Calculated MW: 17 kDa	

Applications

Tested Applications:
Sandwich ELISA, Indirect ELISA, Sample test

Species Specificity:
human

Product Information

85038-4-PBS targets NME1 as part of a matched antibody pair:

MP01750-3: 85038-2-PBS capture and 85038-4-PBS detection (validated in Sandwich ELISA)

Unconjugated rabbit recombinant monoclonal antibody in PBS only (BSA and azide free) storage buffer at a concentration of 1 mg/mL, ready for conjugation. Created using Proteintech's proprietary in-house recombinant technology. Recombinant production enables unrivalled batch-to-batch consistency, easy scale-up, and future security of supply.

This conjugation ready format makes antibodies ideal for use in many applications including: ELISAs, multiplex assays requiring matched pairs, mass cytometry, and multiplex imaging applications. Antibody use should be optimized by the end user for each application and assay.

Storage

Storage:
Store at -80°C.
Storage Buffer:
PBS Only

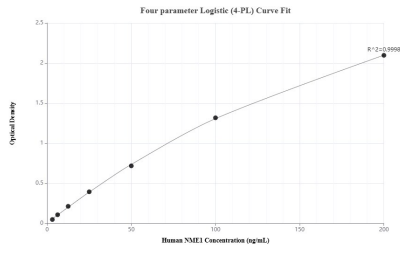
For technical support and original validation data for this product please contact:

T: 1 (888) 4PTGLAB (1-888-478-4522) (toll free in USA), or 1(312) 455-8498 (outside USA)

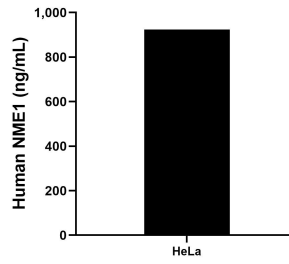
E: proteintech@ptglab.com
W: ptglab.com

This product is exclusively available under Proteintech Group brand and is not available to purchase from any other manufacturer.

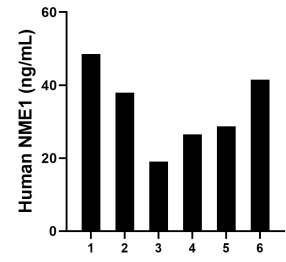
Selected Validation Data



Sandwich ELISA standard curve of MP01750-3, Human NME1 Recombinant Matched Antibody Pair - PBS only. 85038-2-PBS was coated to a plate as the capture antibody and incubated with serial dilutions of standard Ag1548. 85038-4-PBS was HRP conjugated as the detection antibody. Range: 3.13-200 ng/mL



The mean NME1 concentration was determined to be 924.43 ng/mL in HeLa cell extract based on a 1.5 mg/mL extract load.



Serum of six individual healthy human donors was measured. The human NME1 concentration of detected samples was determined to be 33.71 ng/mL with a range of 19.03 - 48.55 ng/mL.