

For Research Use Only

# NME1 Recombinant antibody, PBS Only (Capture/Detector)

Catalog Number:85038-2-PBS



## Basic Information

<b>Catalog Number:</b> 85038-2-PBS	<b>GenBank Accession Number:</b> BC018994	<b>Purification Method:</b> Protein A purification
<b>Size:</b> 100ug , Concentration: 1 mg/ml by Nanodrop;	<b>GeneID (NCBI):</b> 4830	<b>CloneNo.:</b> 242670C7
<b>Source:</b> Rabbit	<b>UNIPROT ID:</b> P15531	
<b>Isotype:</b> IgG	<b>Full Name:</b> non-metastatic cells 1, protein (NM23A) expressed in	
<b>Immunogen Catalog Number:</b> AG1548	<b>Calculated MW:</b> 17 kDa	

## Applications

**Tested Applications:**  
Cytometric bead array, Sandwich ELISA, Indirect ELISA,  
Sample test

**Species Specificity:**  
human

## Product Information

85038-2-PBS targets NME1 as part of a matched antibody pair:

MP01750-1: 85038-3-PBS capture and 85038-2-PBS detection (validated in Cytometric bead array)

MP01750-2: 85038-1-PBS capture and 85038-2-PBS detection (validated in Cytometric bead array)

MP01750-3: 85038-2-PBS capture and 85038-4-PBS detection (validated in Sandwich ELISA)

Unconjugated rabbit recombinant monoclonal antibody in PBS only (BSA and azide free) storage buffer at a concentration of 1 mg/mL, ready for conjugation. Created using Proteintech's proprietary in-house recombinant technology. Recombinant production enables unrivalled batch-to-batch consistency, easy scale-up, and future security of supply.

This conjugation ready format makes antibodies ideal for use in many applications including: ELISAs, multiplex assays requiring matched pairs, mass cytometry, and multiplex imaging applications. Antibody use should be optimized by the end user for each application and assay.

## Storage

**Storage:**  
Store at -80°C.  
**Storage Buffer:**  
PBS Only

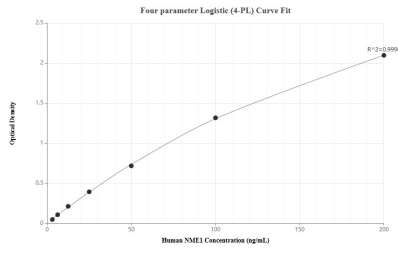
For technical support and original validation data for this product please contact:

T: 1 (888) 4PTGLAB (1-888-478-4522) (toll free  
in USA), or 1(312) 455-8498 (outside USA)

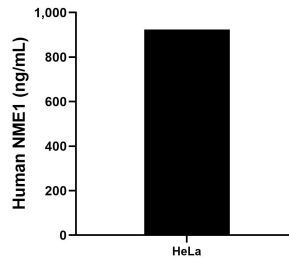
E: [proteintech@ptglab.com](mailto:proteintech@ptglab.com)  
W: [ptglab.com](http://ptglab.com)

**This product is exclusively available under Proteintech Group brand and is not available to purchase from any other manufacturer.**

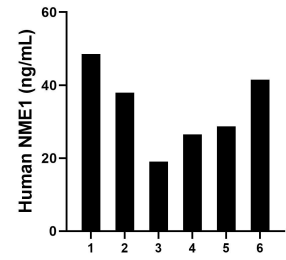
## Selected Validation Data



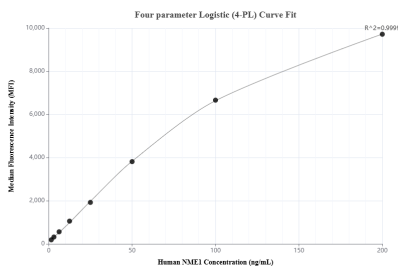
Sandwich ELISA standard curve of MP01750-3, Human NME1 Recombinant Matched Antibody Pair - PBS only. 85038-2-PBS was coated to a plate as the capture antibody and incubated with serial dilutions of standard Ag1548. 85038-4-PBS was HRP conjugated as the detection antibody. Range: 3.13-200 ng/mL



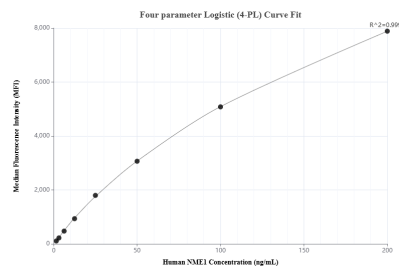
The mean NME1 concentration was determined to be 924.43 ng/mL in HeLa cell extract based on a 1.5 mg/mL extract load.



Serum of six individual healthy human donors was measured. The human NME1 concentration of detected samples was determined to be 33.71 ng/mL with a range of 19.03 - 48.55 ng/mL.



Cytometric bead array standard curve of MP01750-1, NME1 Recombinant Matched Antibody Pair, PBS Only. Capture antibody: 85038-3-PBS. Detection antibody: 85038-2-PBS. Standard: Ag1548. Range: 1.563-200 ng/mL



Cytometric bead array standard curve of MP01750-2, NME1 Recombinant Matched Antibody Pair, PBS Only. Capture antibody: 85038-1-PBS. Detection antibody: 85038-2-PBS. Standard: Ag1548. Range: 1.563-200 ng/mL