

For Research Use Only

# PDLIM1/CLP36 Recombinant antibody

Catalog Number: 85027-5-RR



## Basic Information

<b>Catalog Number:</b> 85027-5-RR	<b>GenBank Accession Number:</b> BC000915	<b>Purification Method:</b> Protein A purification
<b>Size:</b> 100ul , Concentration: 1000 µg/ml by Nanodrop;	<b>GeneID (NCBI):</b> 9124	<b>CloneNo.:</b> 242585C7
<b>Source:</b> Rabbit	<b>UNIPROT ID:</b> O00151	<b>Recommended Dilutions:</b> WB: 1:5000-1:50000 IF/ICC: 1:250-1:1000 FC (Intra): 0.25 ug per 10 <sup>6</sup> cells in a 100 µl suspension
<b>Isotype:</b> IgG	<b>Full Name:</b> PDZ and LIM domain 1	
<b>Immunogen Catalog Number:</b> AG2274	<b>Calculated MW:</b> 329 aa, 36 kDa	
	<b>Observed MW:</b> 36 kDa	

## Applications

<b>Tested Applications:</b> WB, IF/ICC, FC (Intra), ELISA	<b>Positive Controls:</b> WB : C2C12 cells, Caco-2 cells, HEK-293T cells, Saos-2 cells, rat lung tissue, human heart tissue IF/ICC : HeLa cells, FC (Intra) : HepG2 cells,
<b>Species Specificity:</b> human, mouse, rat	

## Background Information

PDLIM1, also named as CLIM1, CLP-36, CLP36, hCLIM1 and Elfin, is a member of the actinin-associated LIM protein (ALP)/enigma protein family, plays a role in neurite outgrowth in the peripheral nervous system. It is a cytoskeletal protein that may act as an adapter that brings other proteins (like kinases) to the cytoskeleton. PDLIM1 and PALLD formed a complex in the dorsal root ganglion (DRG) and PDLIM1 and PALLD were colocalized in the neurites and cell bodies of primary DRG neurons. PDLIM1 may interact with PALLD to influence neurite outgrowth during sciatic nerve regeneration. (PMID: 20381583)

## Storage

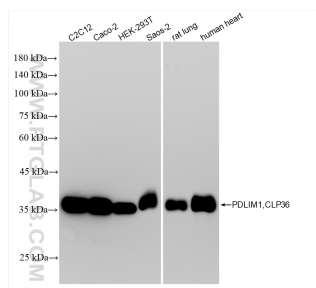
**Storage:**  
Store at -20°C. Stable for one year after shipment.  
**Storage Buffer:**  
PBS with 0.02% sodium azide and 50% glycerol, pH7.3  
Aliquoting is unnecessary for -20°C storage

\*\*\* 20ul sizes contain 0.1% BSA

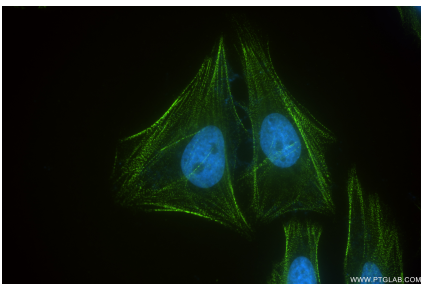
For technical support and original validation data for this product please contact:  
T: 1 (888) 4PTGLAB (1-888-478-4522) (toll free in USA), or 1(312) 455-8498 (outside USA)  
E: [proteintech@ptglab.com](mailto:proteintech@ptglab.com)  
W: [ptglab.com](http://ptglab.com)

This product is exclusively available under Proteintech Group brand and is not available to purchase from any other manufacturer.

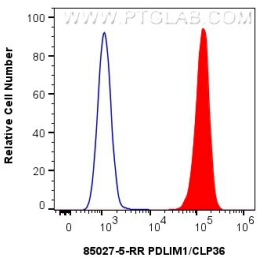
## Selected Validation Data



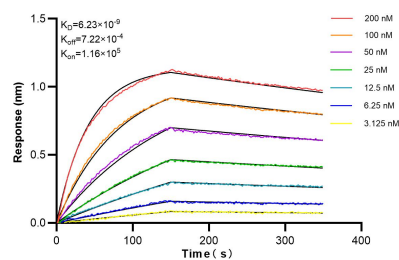
Various lysates were subjected to SDS PAGE followed by western blot with 85027-5-RR (PDLIM1,CLP36 antibody) at dilution of 1:10000 incubated at room temperature for 1.5 hours.



Immunofluorescent analysis of (4% PFA) fixed HeLa cells using PDLIM1/CLP36 antibody (85027-5-RR, Clone: 242585C7) at dilution of 1:500 and CoraLite®488-Conjugated Goat Anti-Rabbit IgG(H+L) (SA00013-2).



1x10<sup>6</sup> HepG2 cells were intracellularly stained with 0.25 ug PDLIM1/CLP36 Recombinant antibody (85027-5-RR, Clone:242585C7) and CoraLite®488-Conjugated Goat Anti-Rabbit IgG(H+L) (SA00013-2) (red), or 0.25 ug Rabbit IgG Isotype Control RecAb (98136-1-RR, Clone: 240953C9) (blue). Cells were fixed with 4% PFA and permeabilized with Flow Cytometry Perm Buffer (PF00011-C).



Bioluminescence resonance energy transfer (BLI) kinetic assays of 85027-5-RR against Human PDLIM1/CLP36 were performed. The affinity constant is 6.23 nM.