

For Research Use Only

# NKp46/NCR1 Recombinant antibody, PBS Only

Catalog Number:85021-4-PBS



## Basic Information

<b>Catalog Number:</b> 85021-4-PBS	<b>GenBank Accession Number:</b> GeneID (NCBI): 9437	<b>Purification Method:</b> Protein A purification
<b>Size:</b> 100ug , Concentration: 1 mg/ml by Nanodrop;	<b>UNIPROT ID:</b> O76036-1	<b>CloneNo.:</b> 242549C5
<b>Source:</b> Rabbit	<b>Full Name:</b> natural cytotoxicity triggering receptor 1	
<b>Isotype:</b> IgG	<b>Calculated MW:</b> 34kDa	

## Applications

**Tested Applications:**  
IF/ICC, Indirect ELISA

**Species Specificity:**  
human

## Background Information

NKp46, also known as natural cytotoxicity triggering receptor 1 (NCR1), is a type I transmembrane protein belonging to the immunoglobulin superfamily. NKp46 is a key activating receptor expressed on natural killer (NK) cells. It plays a key role in the innate immune response by recognizing and binding to viral hemagglutinins and other ligands on infected or tumor cells. NKp46 mediates cytotoxicity and cytokine production upon engagement with its ligands, contributing to the elimination of infected or malignant cells. Its expression and function are tightly regulated, and dysregulation of NKp46 has been implicated in various diseases, including viral infections, cancer, and autoimmune disorders. (PMID: 11234016; 29329948; 9730896; 9314561).

## Storage

**Storage:**  
Store at -80°C.  
**Storage Buffer:**  
PBS Only

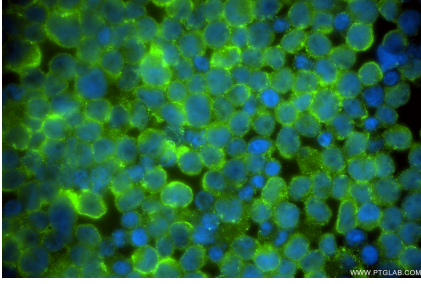
For technical support and original validation data for this product please contact:

T: 1 (888) 4PTGLAB (1-888-478-4522) (toll free  
in USA), or 1(312) 455-8498 (outside USA)

E: [proteintech@ptglab.com](mailto:proteintech@ptglab.com)  
W: [ptglab.com](http://ptglab.com)

**This product is exclusively available under Proteintech Group brand and is not available to purchase from any other manufacturer.**

## Selected Validation Data



Immunofluorescent analysis of (4% PFA) fixed NK-92 cells using NKp46/NCR1/CD335 antibody (85021-4-RR, Clone: 242549C5) at dilution of 1:400 and CoraLite®488-Conjugated Goat Anti-Rabbit IgG(H+L) (SA00013-2). This data was developed using the same antibody clone with 85021-4-PBS in a different storage buffer formulation.