

For Research Use Only

Selenoprotein P Recombinant antibody, PBS Only (Capture/Detector)

Catalog Number:85017-2-PBS



Basic Information

Catalog Number: 85017-2-PBS	GenBank Accession Number: NM_001085486.2	Purification Method: Protein A purification
Size: 100ug , Concentration: 1 mg/ml by Nanodrop;	GeneID (NCBI): 6414	CloneNo.: 242510D6
Source: Rabbit	UNIPROT ID: P49908	
Isotype: IgG	Full Name: selenoprotein P, plasma, 1	
Immunogen Catalog Number: AG32952	Calculated MW: 43 kDa	

Applications

Tested Applications:
Cytometric bead array, Indirect ELISA

Species Specificity:
human

Product Information

85017-2-PBS targets Selenoprotein P as part of a matched antibody pair:

MP01743-1: 85017-2-PBS capture and 85017-1-PBS detection (validated in Cytometric bead array)

MP01743-2: 85017-3-PBS capture and 85017-2-PBS detection (validated in Cytometric bead array)

Unconjugated rabbit recombinant monoclonal antibody in PBS only (BSA and azide free) storage buffer at a concentration of 1 mg/mL, ready for conjugation. Created using Proteintech's proprietary in-house recombinant technology. Recombinant production enables unrivalled batch-to-batch consistency, easy scale-up, and future security of supply.

This conjugation ready format makes antibodies ideal for use in many applications including: ELISAs, multiplex assays requiring matched pairs, mass cytometry, and multiplex imaging applications. Antibody use should be optimized by the end user for each application and assay.

Storage

Storage:
Store at -80°C.
Storage Buffer:
PBS Only

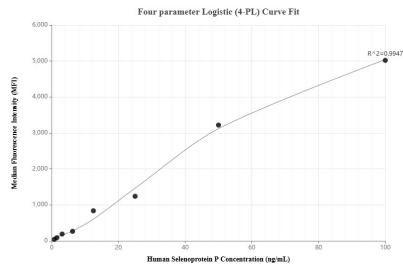
For technical support and original validation data for this product please contact:

T: 1 (888) 4PTGLAB (1-888-478-4522) (toll free
in USA), or 1(312) 455-8498 (outside USA)

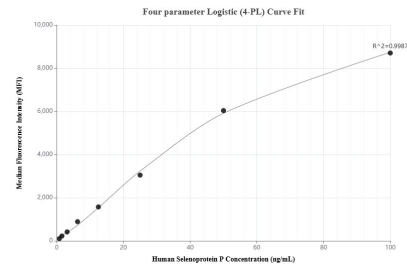
E: proteintech@ptglab.com
W: ptglab.com

This product is exclusively available under Proteintech Group brand and is not available to purchase from any other manufacturer.

Selected Validation Data



Cytometric bead array standard curve of MP01743-2, Selenoprotein P Recombinant Matched Antibody Pair, PBS Only. Capture antibody: 85017-3-PBS. Detection antibody: 85017-2-PBS. Standard: Ag32952. Range: 0.781-100 ng/mL



Cytometric bead array standard curve of MP01743-1, Selenoprotein P Recombinant Matched Antibody Pair, PBS Only. Capture antibody: 85017-2-PBS. Detection antibody: 85017-1-PBS. Standard: Ag32952. Range: 0.781-100 ng/mL