

For Research Use Only

# CUL4B Recombinant antibody, PBS Only (Detector)

Catalog Number: 85001-4-PBS



## Basic Information

<b>Catalog Number:</b> 85001-4-PBS	<b>GenBank Accession Number:</b> BC036216	<b>Purification Method:</b> Protein A purification
<b>Size:</b> 100ug, Concentration: 1 mg/ml by Nanodrop;	<b>GeneID (NCBI):</b> 8450	<b>CloneNo.:</b> 242626F11
<b>Source:</b> Rabbit	<b>UNIPROT ID:</b> Q13620	
<b>Isotype:</b> IgG	<b>Full Name:</b> cullin 4B	
<b>Immunogen Catalog Number:</b> AG3563	<b>Calculated MW:</b> 913 aa, 104 kDa	

## Applications

**Tested Applications:**  
IF/ICC, Cytometric bead array, Indirect ELISA

**Species Specificity:**  
human

## Product Information

85001-4-PBS targets CUL4B as part of a matched antibody pair.

MP01736-2: 85001-3-PBS capture and 85001-4-PBS detection (validated in Cytometric bead array)

Unconjugated rabbit recombinant monoclonal antibody in PBS only (BSA and azide free) storage buffer at a concentration of 1 mg/mL, ready for conjugation. Created using Proteintech's proprietary in-house recombinant technology. Recombinant production enables unrivalled batch-to-batch consistency, easy scale-up, and future security of supply.

This conjugation ready format makes antibodies ideal for use in many applications including: ELISAs, multiplex assays requiring matched pairs, mass cytometry, and multiplex imaging applications. Antibody use should be optimized by the end user for each application and assay.

## Background Information

Cullin-RING ligases (CRLs) complexes participate in the regulation of diverse cellular processes, including cell cycle progression, transcription, signal transduction and development (PMID: 21816341)(PMID: 21554755). Serving as the scaffold protein, cullins are crucial for the assembly of ligase complexes, which recognize and target various substrates for proteosomal degradation. Two cullin 4 (CUL4) proteins, CUL4A (87 kDa) and CUL4B (104 kDa), are two members in cullin family with 83% of identity. Mutations in human CUL4B are one of the major causes of X-linked mental retardation. Cul4b knockout mice demonstrated that CUL4B is indispensable for embryonic development in the mouse (PMID: 22606329).

## Storage

**Storage:**  
Store at -80°C.  
**Storage Buffer:**  
PBS Only

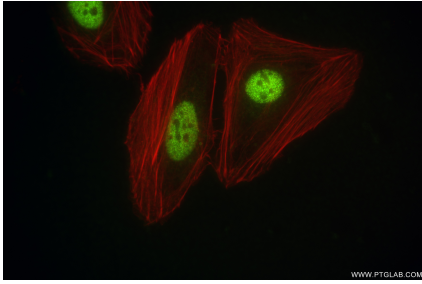
For technical support and original validation data for this product please contact:

T: 1 (888) 4PTGLAB (1-888-478-4522) (toll free  
in USA), or 1(312) 455-8498 (outside USA)

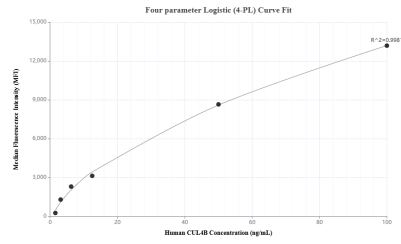
E: [proteintech@ptglab.com](mailto:proteintech@ptglab.com)  
W: [ptglab.com](http://ptglab.com)

**This product is exclusively available under Proteintech Group brand and is not available to purchase from any other manufacturer.**

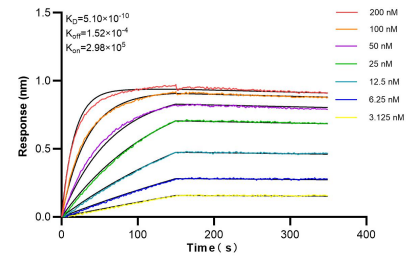
## Selected Validation Data



Immunofluorescent analysis of (4% PFA) fixed HeLa cells using CUL4B antibody (85001-4-RR, Clone: 242626F11) at dilution of 1:500 and CoraLite®488-Conjugated Goat Anti-Rabbit IgG(H+L) (SA00013-2), CL594-Phalloidin (red). This data was developed using the same antibody clone with 85001-4-PBS in a different storage buffer formulation.



Cytometric bead array standard curve of MP01736-2, CUL4B Recombinant Matched Antibody Pair, PBS Only. Capture antibody: 85001-3-PBS. Detection antibody: 85001-4-PBS. Standard: Ag3563. Range: 1.563-100 ng/mL



Bi-layer interferometry (BLI) kinetic assays of 85001-4-RR against Human CUL4B were performed. The affinity constant is 0.51 nM.