

For Research Use Only

# ATP1A2 Recombinant antibody, PBS Only (Detector)

Catalog Number:84999-2-PBS



## Basic Information

<b>Catalog Number:</b> 84999-2-PBS	<b>GenBank Accession Number:</b> BC052271	<b>Purification Method:</b> Protein A purification
<b>Size:</b> 100ug , Concentration: 1 mg/ml by Nanodrop;	<b>GeneID (NCBI):</b> 477	<b>CloneNo.:</b> 242414F5
<b>Source:</b> Rabbit	<b>UNIPROT ID:</b> P50993	
<b>Isotype:</b> IgG	<b>Full Name:</b> ATPase, Na <sup>+</sup> /K <sup>+</sup> transporting, alpha 2 (+) polypeptide	
<b>Immunogen Catalog Number:</b> AG10489	<b>Calculated MW:</b> 1020 aa, 112 kDa	

## Applications

**Tested Applications:**  
Cytometric bead array, Sandwich ELISA, Indirect ELISA, Sample test

**Species Specificity:**  
human

## Product Information

84999-2-PBS targets ATP1A2 as part of a matched antibody pair:

MP01738-1: 84999-3-PBS capture and 84999-2-PBS detection (validated in Cytometric bead array, Sandwich ELISA)

MP01738-2: 84999-1-PBS capture and 84999-2-PBS detection (validated in Cytometric bead array)

Unconjugated rabbit recombinant monoclonal antibody in PBS only (BSA and azide free) storage buffer at a concentration of 1 mg/mL, ready for conjugation. Created using Proteintech's proprietary in-house recombinant technology. Recombinant production enables unrivalled batch-to-batch consistency, easy scale-up, and future security of supply.

This conjugation ready format makes antibodies ideal for use in many applications including: ELISAs, multiplex assays requiring matched pairs, mass cytometry, and multiplex imaging applications. Antibody use should be optimized by the end user for each application and assay.

## Storage

**Storage:**  
Store at -80°C.  
**Storage Buffer:**  
PBS Only

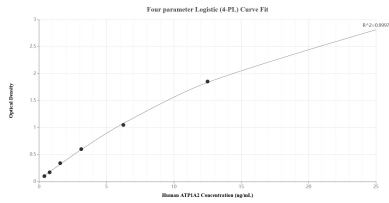
For technical support and original validation data for this product please contact:

T: 1 (888) 4PTGLAB (1-888-478-4522) (toll free in USA), or 1(312) 455-8498 (outside USA)

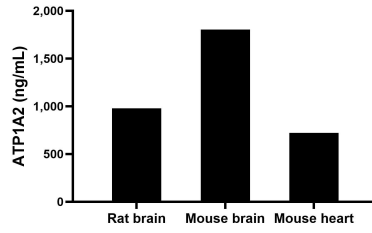
E: [proteintech@ptglab.com](mailto:proteintech@ptglab.com)  
W: [ptglab.com](http://ptglab.com)

**This product is exclusively available under Proteintech Group brand and is not available to purchase from any other manufacturer.**

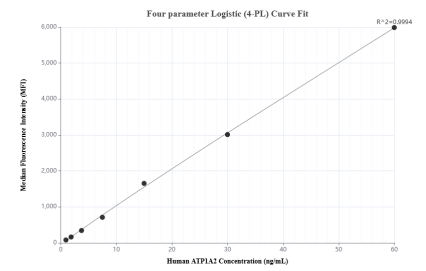
## Selected Validation Data



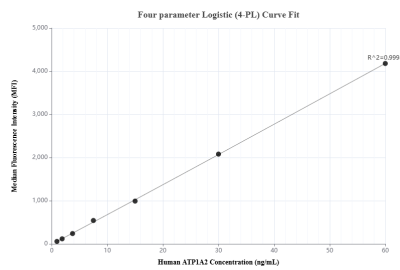
Sandwich ELISA standard curve of MP01738-1, Human ATP1A2 Recombinant Matched Antibody Pair - PBS only. 84999-3-PBS was coated to a plate as the capture antibody and incubated with serial dilutions of standard Ag10489. 84999-2-PBS was HRP conjugated as the detection antibody. Range: 0.391-25 ng/mL



The mean ATP1A2 concentration was determined to be 976.80 ng/mL in rat brain extract based on a 1.60 mg/mL extract load, 1,802.51 ng/mL in mouse brain cell extract based on a 2.20 mg/mL extract load and 719.92 ng/mL in mouse heart cell extract based on a 1.40 mg/mL extract load.



Cytometric bead array standard curve of MP01738-1, ATP1A2 Recombinant Matched Antibody Pair, PBS Only. Capture antibody: 84999-3-PBS. Detection antibody: 84999-2-PBS. Standard: Ag10489. Range: 0.938-60 ng/mL



Cytometric bead array standard curve of MP01738-2, ATP1A2 Recombinant Matched Antibody Pair, PBS Only. Capture antibody: 84999-1-PBS. Detection antibody: 84999-2-PBS. Standard: Ag10489. Range: 0.938-60 ng/mL