

For Research Use Only

YBX1 Recombinant antibody, PBS Only (Capture)

Catalog Number: 84993-2-PBS



Basic Information

Catalog Number: 84993-2-PBS	GenBank Accession Number: BC010430	Purification Method: Protein A purification
Size: 100ug, Concentration: 1 mg/ml by Nanodrop;	GeneID (NCBI): 4904	CloneNo.: 242462D2
Source: Rabbit	UNIPROT ID: P67809	
Isotype: IgG	Full Name: Y box binding protein 1	
Immunogen Catalog Number: AG14129	Calculated MW: 324 aa, 36 kDa	

Applications

Tested Applications:
Cytometric bead array, Sandwich ELISA, Indirect ELISA, Sample test

Species Specificity:
human

Product Information

84993-2-PBS targets YBX1 as part of a matched antibody pair:

MP01766-1: 84993-2-PBS capture and 84993-3-PBS detection (validated in Cytometric bead array, Sandwich ELISA)

MP01766-2: 84993-2-PBS capture and 84993-1-PBS detection (validated in Cytometric bead array)

Unconjugated rabbit recombinant monoclonal antibody in PBS only (BSA and azide free) storage buffer at a concentration of 1 mg/mL, ready for conjugation. Created using Proteintech's proprietary in-house recombinant technology. Recombinant production enables unrivalled batch-to-batch consistency, easy scale-up, and future security of supply.

This conjugation ready format makes antibodies ideal for use in many applications including: ELISAs, multiplex assays requiring matched pairs, mass cytometry, and multiplex imaging applications. Antibody use should be optimized by the end user for each application and assay.

Storage

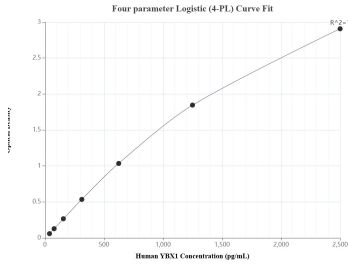
Storage:
Store at -80°C.

Storage Buffer:
PBS Only

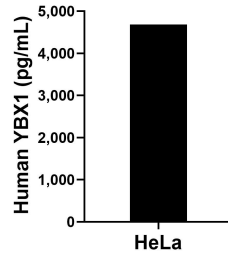
For technical support and original validation data for this product please contact:
T: 1 (888) 4PTGLAB (1-888-478-4522) (toll free in USA), or 1(312) 455-8498 (outside USA) E: proteintech@ptglab.com
W: ptglab.com

This product is exclusively available under Proteintech Group brand and is not available to purchase from any other manufacturer.

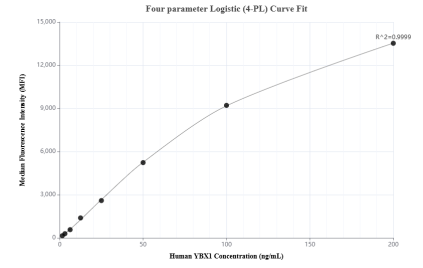
Selected Validation Data



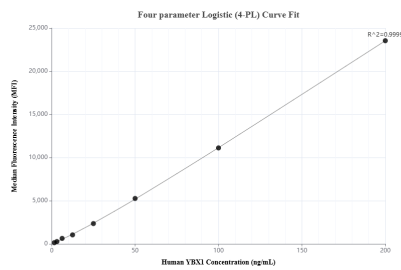
Sandwich ELISA standard curve of MP01766-1, Human YBX1 Recombinant Matched Antibody Pair - PBS only. 84993-2-PBS was coated to a plate as the capture antibody and incubated with serial dilutions of standard Ag14129. 84993-3-PBS was HRP conjugated as the detection antibody. Range: 39.1-2500 pg/mL



The mean YBX1 concentration was determined to be 4,684.7 pg/mL in HeLa cell extract based on a 1.3 mg/mL extract load.



Cytometric bead array standard curve of MP01766-2, YBX1 Recombinant Matched Antibody Pair, PBS Only. Capture antibody: 84993-2-PBS. Detection antibody: 84993-1-PBS. Standard: Ag14129. Range: 1.563-200 ng/mL



Cytometric bead array standard curve of MP01766-1, YBX1 Recombinant Matched Antibody Pair, PBS Only. Capture antibody: 84993-2-PBS. Detection antibody: 84993-3-PBS. Standard: Ag14129. Range: 1.563-200 ng/mL