

For Research Use Only

PCM1 Recombinant antibody, PBS Only

Catalog Number: 84979-2-PBS



Basic Information

| | | |
|---|--|---|
| Catalog Number: 84979-2-PBS | GenBank Accession Number: BC000453 | Purification Method: Protein A purification |
| Size: 100ug , Concentration: 1 mg/ml by Nanodrop; | GeneID (NCBI): 5108 | CloneNo.: 242199D6 |
| Source: Rabbit | UNIPROT ID: Q15154 | |
| Isotype: IgG | Full Name: pericentriolar material 1 | |
| Immunogen Catalog Number: AG13977 | Calculated MW: 2024 aa, 228 kDa | |

Applications

Tested Applications:
IHC, IF/ICC, FC (Intra), Indirect ELISA

Species Specificity:
human, mouse

Background Information

Pericentriolar material 1 (PCM1) is a component of centriolar satellites, which are electron dense granules scattered around centrosomes (PMID: 10579718). PCM1 is required for centrosome assembly and function. It acts as a scaffold to target several proteins to the centrosome in a dynein motor-dependent manner and regulate microtubular dynamics (PMID:18762586; 12403812). It is also involved in the biogenesis of cilia (PMID: 18772192). Chromosomal aberrations involving PCM1 gene are associated with papillary thyroid carcinomas and a variety of hematological malignancies, including atypical chronic myeloid leukemia and T-cell lymphoma. (PMID: 10980597; 16091753; 15805263; 16424865).

Storage

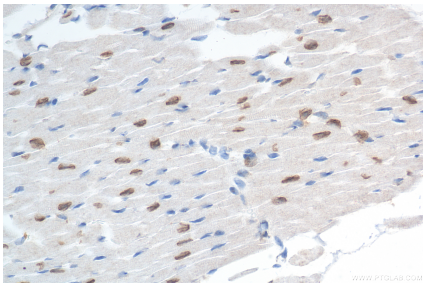
Storage:
Store at -80°C.

Storage Buffer:
PBS Only

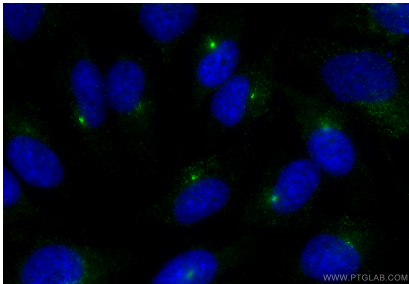
For technical support and original validation data for this product please contact:
T: 1 (888) 4PTGLAB (1-888-478-4522) (toll free in USA), or 1(312) 455-8498 (outside USA)
E: proteintech@ptglab.com
W: ptglab.com

This product is exclusively available under Proteintech Group brand and is not available to purchase from any other manufacturer.

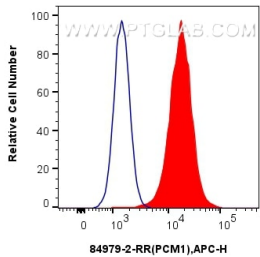
Selected Validation Data



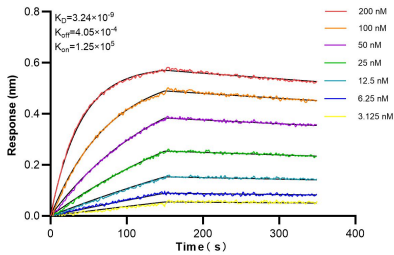
Immunohistochemical analysis of paraffin-embedded mouse heart tissue slide using 84979-2-RR (PCM1 antibody) at dilution of 1:200 (under 40x lens). Heat mediated antigen retrieval with Tris-EDTA buffer (pH 9.0). This data was developed using the same antibody clone with 84979-2-PBS in a different storage buffer formulation.



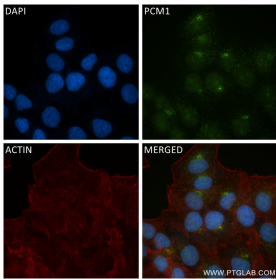
Immunofluorescent analysis of (-20°C Methanol) fixed HeLa cells using PCM1 antibody (84979-2-RR, Clone: 242199D6) at dilution of 1:400 and CoraLite®488-Conjugated Goat Anti-Rabbit IgG(H+L) (SA00013-2). This data was developed using the same antibody clone with 84979-2-PBS in a different storage buffer formulation.



1x10⁶ K562 were intracellularly stained with 0.25 ug PCM1 Recombinant antibody (84979-2-RR, Clone:242199D6) and APC-Conjugated Goat Anti-Rabbit IgG(H+L)(red), or 0.25 ug Rabbit IgG Isotype Control Recombinant Antibody (98136-1-RR, Clone: 240953C9) (blue). Cells were fixed with 4% PFA and permeabilized with Flow Cytometry Perm Buffer (PF00011-C). This data was developed using the same antibody clone with 84979-2-PBS in a different storage



Biolayer interferometry (BLI) kinetic assays of 84979-2-RR against Human PCM1 were performed. The affinity constant is 3.24 nM.



Immunofluorescent analysis of (4% PFA) fixed HepG2 cells using PCM1 antibody (84979-2-RR, Clone: 242199D6) at dilution of 1:500 and CoraLite®488-Conjugated Goat Anti-Rabbit IgG(H+L) (SA00013-2), CL594-Phalloidin (red). This data was developed using the same antibody clone with 84979-2-PBS in a different storage buffer formulation.