

For Research Use Only

RBM25 Recombinant antibody, PBS Only

Catalog Number: 84968-4-PBS



Basic Information

Catalog Number: 84968-4-PBS	GenBank Accession Number: BC113389	Purification Method: Protein A purification
Size: 100ug , Concentration: 1 mg/ml by Nanodrop;	GeneID (NCBI): 58517	CloneNo.: 242526B7
Source: Rabbit	UNIPROT ID: P49756	
Isotype: IgG	Full Name: RNA binding motif protein 25	
Immunogen Catalog Number: AG18244	Calculated MW: 843 aa, 100 kDa	
	Observed MW: 110-120 kDa	

Applications

Tested Applications:
WB, IF/ICC, Indirect ELISA

Species Specificity:
human, mouse

Background Information

RNA-binding protein 25 (RBM25), also named as Protein S164 or RNPC7, is a 843 amino acid protein, which contains one RRM domain and one PWI domain. RBM25 localizes in the nucleus and cytoplasm. RBM25 acts as a regulator of alternative pre-mRNA splicing and is involved in apoptotic cell death through the regulation of the apoptotic factor BCL2L1 isoform expression.

Storage

Storage:
Store at -80°C.

Storage Buffer:
PBS Only

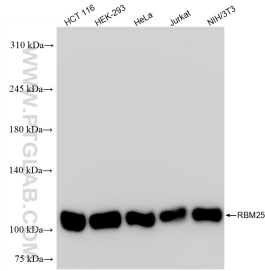
For technical support and original validation data for this product please contact:

T: 1 (888) 4PTGLAB (1-888-478-4522) (toll free in USA), or 1(312) 455-8498 (outside USA)

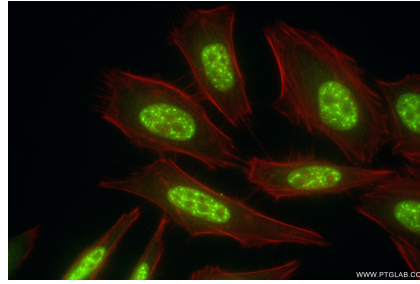
E: proteintech@ptglab.com
W: ptglab.com

This product is exclusively available under Proteintech Group brand and is not available to purchase from any other manufacturer.

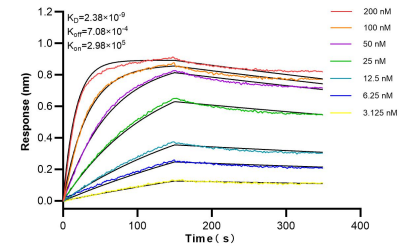
Selected Validation Data



Various lysates were subjected to SDS PAGE followed by western blot with 84968-4-RR (RBM25 antibody) at dilution of 1:10000 incubated at room temperature for 1.5 hours. This data was developed using the same antibody clone with 84968-4-PBS in a different storage buffer formulation.



Immunofluorescent analysis of (4% PFA) fixed HeLa cells using RBM25 antibody (84968-4-RR, Clone: 242526B7) at dilution of 1:500 and CoraLite® 488-Conjugated Goat Anti-Rabbit IgG(H+L) (SA00013-2), CL594-Phalloidin (red). This data was developed using the same antibody clone with 84968-4-PBS in a different storage buffer formulation.



Bi-layer interferometry (BLI) kinetic assays of 84968-4-RR against Human RBM25 were performed. The affinity constant is 2.38 nM.