

For Research Use Only

MEK1/2 Recombinant antibody, PBS Only (Capture/Detector)

Catalog Number: 84967-1-PBS



Basic Information

Catalog Number: 84967-1-PBS	GenBank Accession Number: BC018645	Purification Method: Protein A purification
Size: 100ug, Concentration: 1 mg/ml by Nanodrop;	GeneID (NCBI): 5605	CloneNo.: 242614G3
Source: Rabbit	UNIPROT ID: P36507	
Isotype: IgG	Full Name: mitogen-activated protein kinase kinase 2	
Immunogen Catalog Number: AG1481	Calculated MW: 44 kDa	
	Observed MW: 44 kDa	

Applications

Tested Applications:
WB, IF/ICC, FC (Intra), Cytometric bead array, Sandwich ELISA, Indirect ELISA, Sample test

Species Specificity:
human, mouse, rat

Product Information

84967-1-PBS targets MEK1/2 as part of a matched antibody pair.

MP01692-1: 84967-2-PBS capture and 84967-1-PBS detection (validated in Cytometric bead array, Sandwich ELISA)

MP01692-2: 84967-1-PBS capture and 84967-3-PBS detection (validated in Cytometric bead array)

Unconjugated rabbit recombinant monoclonal antibody in PBS only (BSA and azide free) storage buffer at a concentration of 1 mg/mL, ready for conjugation. Created using Proteintech's proprietary in-house recombinant technology. Recombinant production enables unrivalled batch-to-batch consistency, easy scale-up, and future security of supply.

This conjugation ready format makes antibodies ideal for use in many applications including: ELISAs, multiplex assays requiring matched pairs, mass cytometry, and multiplex imaging applications. Antibody use should be optimized by the end user for each application and assay.

Background Information

MEK2(MAPK/ERK kinase 2) is also named as MAP2K2, MKK2, PRKMK2 and belongs to the MAP kinase kinase subfamily. MAPKK is itself dependent on Ser/Thr phosphorylation for activity catalyzed by MAP kinase kinase kinases (RAF or MEKK1). MEK1 and MEK2 are closely related, dual-specificity tyrosine/threonine protein kinases found in the Ras/Raf/MEK/ERK mitogen-activated protein kinase (MAPK) signaling pathway. 84967-1-RR can recognize both the MEK2 and MEK1.

Storage

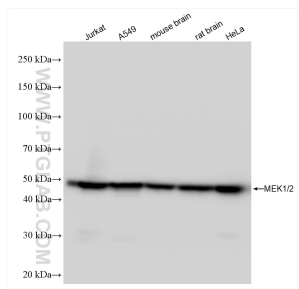
Storage:
Store at -80°C.

Storage Buffer:
PBS Only

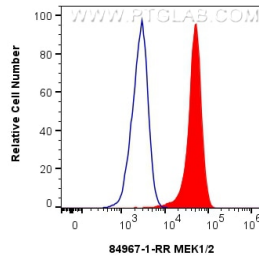
For technical support and original validation data for this product please contact:
T: 1 (888) 4PTGLAB (1-888-478-4522) (toll free in USA), or 1(312) 455-8498 (outside USA)
E: proteintech@ptglab.com
W: ptglab.com

This product is exclusively available under Proteintech Group brand and is not available to purchase from any other manufacturer.

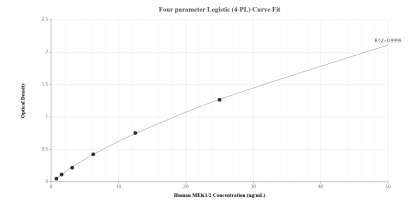
Selected Validation Data



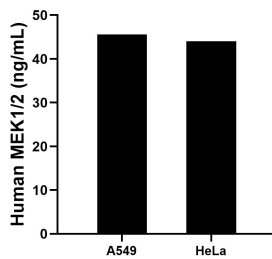
Various lysates were subjected to SDS PAGE followed by western blot with 84967-1-RR (MEK1/2 antibody) at dilution of 1:10000 incubated at room temperature for 1.5 hours. This data was developed using the same antibody clone with 84967-1-PBS in a different storage buffer formulation.



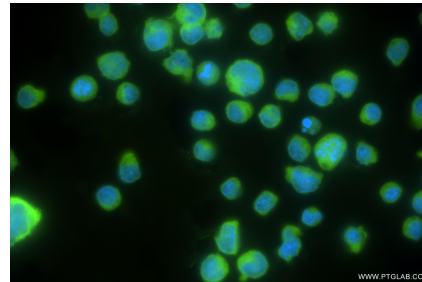
1×10^6 Jurkat cells were intracellularly stained with 0.25 μ g MEK1/2 Recombinant Antibody (84967-1-RR, Clone:242614G3) and CoraLite®488-Conjugated Goat Anti-Rabbit IgG(H+L) (SA00013-2)(red), or 0.25 μ g Rabbit IgG Isotype Control RecAb (98136-1-RR, Clone: 240953C9) (blue). Cells were fixed with 4% PFA and permeabilized with Flow Cytometry Perm Buffer (PF00011-C). This data was developed using the same antibody clone with 84967-1-PBS in a



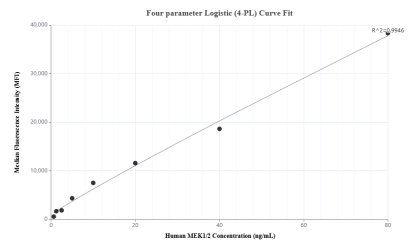
Sandwich ELISA standard curve of MP01692-1, Human MEK2 Recombinant Matched Antibody Pair - PBS only. 84967-2-PBS was coated to a plate as the capture antibody and incubated with serial dilutions of standard Ag1481. 84967-1-PBS was HRP conjugated as the detection antibody. Range: 0.781-50 ng/mL



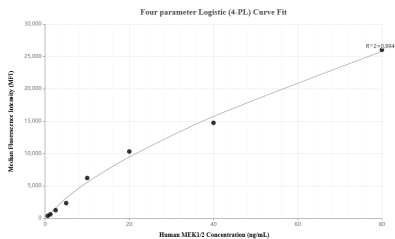
The mean MEK2 concentration was determined to be 45.61 ng/mL in A549 cell extract based on a 1.50 mg/mL extract load and 44.07 ng/mL in HeLa cell extract based on a 1.00 mg/mL extract load.



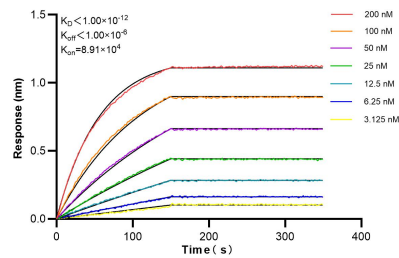
Immunofluorescent analysis of (4% PFA) fixed Jurkat cells using MEK1/2 antibody (84967-1-RR, Clone: 242614G3) at dilution of 1:400 and CoraLite®488-Conjugated Goat Anti-Rabbit IgG(H+L) (SA00013-2). This data was developed using the same antibody clone with 84967-1-PBS in a different storage buffer formulation.



Cytometric bead array standard curve of MP01692-1, MEK2 Recombinant Matched Antibody Pair, PBS Only. Capture antibody: 84967-2-PBS. Detection antibody: 84967-1-PBS. Standard: Ag1481. Range: 0.625-80 ng/mL



Cytometric bead array standard curve of MP01692-2, MEK2 Recombinant Matched Antibody Pair, PBS Only. Capture antibody: 84967-1-PBS. Detection antibody: 84967-3-PBS. Standard: Ag1481. Range: 0.625-80 ng/mL



Biolayer interferometry (BLI) kinetic assays of 84967-1-RR against Human MEK1/2 were performed. The affinity constant is below 1 pM.