

For Research Use Only

GOSR2/Membrin Recombinant antibody, PBS Only

Catalog Number: 84962-4-PBS



Basic Information

Catalog Number: 84962-4-PBS	GenBank Accession Number: BC009710	Purification Method: Protein A purification
Size: 100ug , Concentration: 1 mg/ml by Nanodrop;	GeneID (NCBI): 9570	CloneNo.: 242589D8
Source: Rabbit	UNIPROT ID: O14653	
Isotype: IgG	Full Name: golgi SNAP receptor complex member 2	
Immunogen Catalog Number: AG2736	Calculated MW: 212 aa, 25 kDa	
	Observed MW: 23-25 kDa	

Applications

Tested Applications:
WB, IF/ICC, Indirect ELISA

Species Specificity:
human, mouse, rat

Background Information

Golgi SNAP receptor complex member 2 (GOSR2), also known as GS27 or Membrin, is a member of the soluble NSF attachment protein receptor (SNARE) family of vesicle docking proteins. GOSR2 is localized in the Golgi apparatus. It is involved in the transport of proteins from the cis/medial-Golgi to the trans-Golgi network.

Storage

Storage:
Store at -80°C.

Storage Buffer:
PBS Only

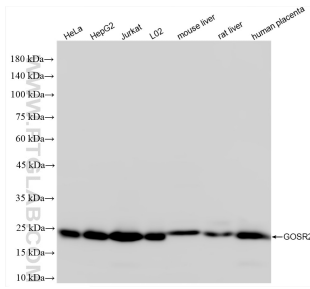
For technical support and original validation data for this product please contact:

T: 1 (888) 4PTGLAB (1-888-478-4522) (toll free in USA), or 1(312) 455-8498 (outside USA)

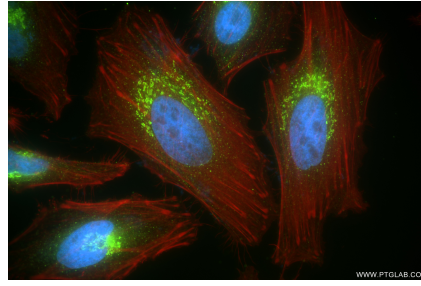
E: proteintech@ptglab.com
W: ptglab.com

This product is exclusively available under Proteintech Group brand and is not available to purchase from any other manufacturer.

Selected Validation Data



Various lysates were subjected to SDS PAGE followed by western blot with 84962-4-RR (GOSR2/Membrin antibody) at dilution of 1:10000 incubated at room temperature for 1.5 hours. This data was developed using the same antibody clone with 84962-4-PBS in a different storage buffer formulation.



Immunofluorescent analysis of (4% PFA) fixed HeLa cells using GOSR2/Membrin antibody (84962-4-RR, Clone: 242589D8) at dilution of 1:500 and CoraLite® 488-Conjugated Goat Anti-Rabbit IgG(H+L) (SA00013-2), CL594-Phalloidin (red). This data was developed using the same antibody clone with 84962-4-PBS in a different storage buffer formulation.