

For Research Use Only

USP33 Recombinant antibody, PBS Only (Capture/Detector)

Catalog Number: 84958-2-PBS



Basic Information

Catalog Number: 84958-2-PBS	GenBank Accession Number: BC016663	Purification Method: Protein A purification
Size: 100ug, Concentration: 1 mg/ml by Nanodrop;	GeneID (NCBI): 23032	CloneNo.: 242535B10
Source: Rabbit	UNIPROT ID: Q8TEY7	
Isotype: IgG	Full Name: ubiquitin specific peptidase 33	
Immunogen Catalog Number: AG14268	Calculated MW: 942 aa, 107 kDa	

Applications

Tested Applications:
Cytometric bead array, Sandwich ELISA, Indirect ELISA,
Sample test

Species Specificity:
human

Product Information

84958-2-PBS targets USP33 as part of a matched antibody pair:

MP01703-2: 84958-2-PBS capture and 84958-1-PBS detection (validated in Cytometric bead array)

MP01703-3: 84958-1-PBS capture and 84958-2-PBS detection (validated in Sandwich ELISA)

Unconjugated rabbit recombinant monoclonal antibody in PBS only (BSA and azide free) storage buffer at a concentration of 1 mg/mL, ready for conjugation. Created using Proteintech's proprietary in-house recombinant technology. Recombinant production enables unrivalled batch-to-batch consistency, easy scale-up, and future security of supply.

This conjugation ready format makes antibodies ideal for use in many applications including: ELISAs, multiplex assays requiring matched pairs, mass cytometry, and multiplex imaging applications. Antibody use should be optimized by the end user for each application and assay.

Storage

Storage:
Store at -80°C.
Storage Buffer:
PBS Only

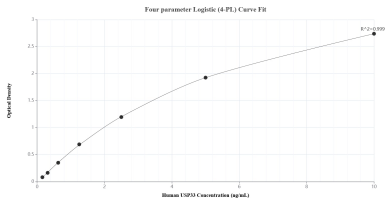
For technical support and original validation data for this product please contact:

T: 1 (888) 4PTGLAB (1-888-478-4522) (toll free
in USA), or 1(312) 455-8498 (outside USA)

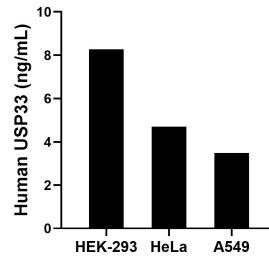
E: proteintech@ptglab.com
W: ptglab.com

This product is exclusively available under Proteintech Group brand and is not available to purchase from any other manufacturer.

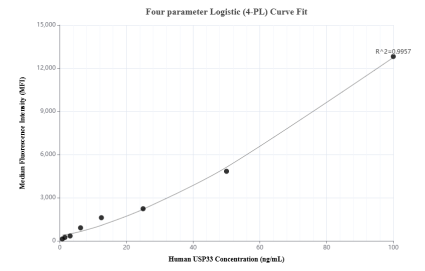
Selected Validation Data



Sandwich ELISA standard curve of MP01703-3, Human USP33 Recombinant Matched Antibody Pair - PBS only. 84958-1-PBS was coated to a plate as the capture antibody and incubated with serial dilutions of standard Ag14268. 84958-2-PBS was HRP conjugated as the detection antibody. Range: 0.156-10 ng/mL



The mean USP33 concentration was determined to be 8.27 ng/mL in HEK-293 cell extract based on a 2.7 mg/mL extract load, 4.70 ng/mL in HeLa cell extract based on a 1.30 mg/mL extract load and 3.49 ng/mL in A549 cell extract based on a 1.50 mg/mL extract load.



Cytometric bead array standard curve of MP01703-2, USP33 Recombinant Matched Antibody Pair, PBS Only. Capture antibody: 84958-2-PBS. Detection antibody: 84958-1-PBS. Standard: Ag14268. Range: 0.781-100 ng/mL