

For Research Use Only

RCN2 Recombinant antibody

Catalog Number: 84956-4-RR



Basic Information

Catalog Number: 84956-4-RR	GenBank Accession Number: BC004892	Purification Method: Protein A purification
Size: 100ul , Concentration: 1000 µg/ml by Nanodrop;	GeneID (NCBI): 5955	CloneNo.: 242612A4
Source: Rabbit	UNIPROT ID: Q14257	Recommended Dilutions: WB 1:5000-1:50000 IF/ICC 1:200-1:800
Isotype: IgG	Full Name: reticulocalbin 2, EF-hand calcium binding domain	
Immunogen Catalog Number: AG0247	Calculated MW: 37 kDa	
	Observed MW: 55 kDa	

Applications

Tested Applications:
WB, IF/ICC, ELISA

Species Specificity:
human, mouse, rat

Positive Controls:

WB : rat liver tissue, HeLa cells, HEK-293 cells, U-251 cells, mouse liver tissue

IF/ICC : HeLa cells, HepG2 cells

Background Information

Reticulocalbin 2 (RCN2) is a Ca(2+)-binding protein that is specifically localized in the endoplasmic reticulum (ER). It is also termed ERC-55, i.e. ER calcium-binding protein of 55 kDa. It is a single copy gene and is encoded by an approximately 1900-base mRNA, which shows a ubiquitous expression pattern. The protein comprises an amino-terminal signal sequence followed by six copies of the EF-hand Ca²⁺ binding motif.

Storage

Storage:
Store at -20°C. Stable for one year after shipment.

Storage Buffer:
PBS with 0.02% sodium azide and 50% glycerol pH 7.3.

Aliquoting is unnecessary for -20°C storage

*** 20ul sizes contain 0.1% BSA

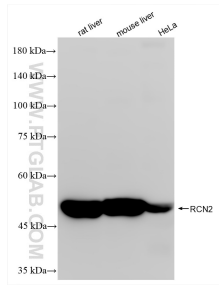
For technical support and original validation data for this product please contact:

T: 1 (888) 4PTGLAB (1-888-478-4522) (toll free in USA), or 1(312) 455-8498 (outside USA)

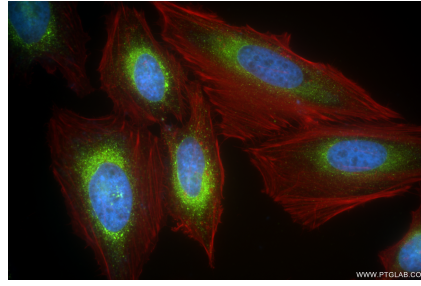
E: proteintech@ptglab.com
W: ptglab.com

This product is exclusively available under Proteintech Group brand and is not available to purchase from any other manufacturer.

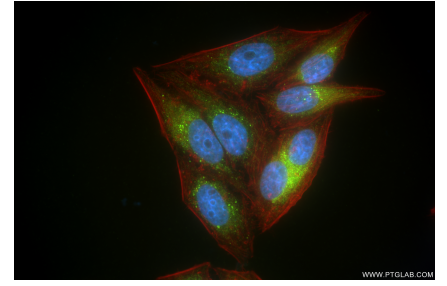
Selected Validation Data



Various lysates were subjected to SDS PAGE followed by western blot with 84956-4-RR (RCN2 antibody) at dilution of 1:10000 incubated at room temperature for 1.5 hours.



Immunofluorescent analysis of (4% PFA) fixed HeLa cells using RCN2 antibody (84956-4-RR, Clone: 242612A4) at dilution of 1:400 and CoraLite® 488-Conjugated Goat Anti-Rabbit IgG(H+L) (SA00013-2), CL594-Phalloidin (red).



Immunofluorescent analysis of (4% PFA) fixed HepG2 cells using RCN2 antibody (84956-4-RR, Clone: 242612A4) at dilution of 1:400 and CoraLite® 488-Conjugated Goat Anti-Rabbit IgG(H+L) (SA00013-2), CL594-Phalloidin (red).