

For Research Use Only

# APOH Recombinant antibody, PBS Only (Capture)

Catalog Number: 84943-1-PBS



## Basic Information

<b>Catalog Number:</b> 84943-1-PBS	<b>GenBank Accession Number:</b> NM_000042.2	<b>Purification Method:</b> Protein A purification
<b>Size:</b> 100ug, Concentration: 1 mg/ml by Nanodrop;	<b>GeneID (NCBI):</b> 350	<b>CloneNo.:</b> 242454B2
<b>Source:</b> Rabbit	<b>UNIPROT ID:</b> P02749	
<b>Isotype:</b> IgG	<b>Full Name:</b> apolipoprotein H (beta-2-glycoprotein I)	
	<b>Calculated MW:</b> 38 kDa	

## Applications

**Tested Applications:**  
Cytometric bead array, Sandwich ELISA, Indirect ELISA,  
Sample test

**Species Specificity:**  
human

## Product Information

84943-1-PBS targets APOH as part of a matched antibody pair:

MP01667-1: 84943-1-PBS capture and 84943-2-PBS detection (validated in Cytometric bead array, Sandwich ELISA)

MP01667-2: 84943-1-PBS capture and 84943-3-PBS detection (validated in Cytometric bead array)

Unconjugated rabbit recombinant monoclonal antibody in PBS only (BSA and azide free) storage buffer at a concentration of 1 mg/mL, ready for conjugation. Created using Proteintech's proprietary in-house recombinant technology. Recombinant production enables unrivalled batch-to-batch consistency, easy scale-up, and future security of supply.

This conjugation ready format makes antibodies ideal for use in many applications including: ELISAs, multiplex assays requiring matched pairs, mass cytometry, and multiplex imaging applications. Antibody use should be optimized by the end user for each application and assay.

## Storage

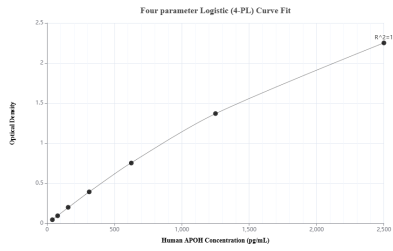
**Storage:**  
Store at -80°C.

**Storage Buffer:**  
PBS Only

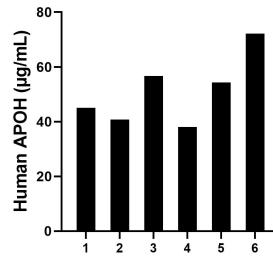
For technical support and original validation data for this product please contact:  
T: 1 (888) 4PTGLAB (1-888-478-4522) (toll free in USA), or 1(312) 455-8498 (outside USA) E: [proteintech@ptglab.com](mailto:proteintech@ptglab.com) W: [ptglab.com](http://ptglab.com)

This product is exclusively available under Proteintech Group brand and is not available to purchase from any other manufacturer.

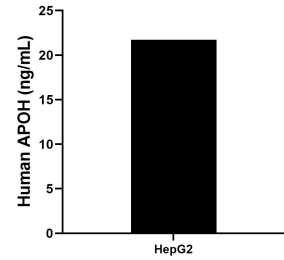
## Selected Validation Data



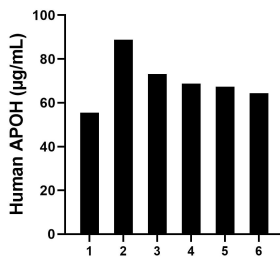
Sandwich ELISA standard curve of MP01667-1, Human APOH Recombinant Matched Antibody Pair - PBS only. 84943-1-PBS was coated to a plate as the capture antibody and incubated with serial dilutions of standard Eg3084. 84943-2-PBS was HRP conjugated as the detection antibody. Range: 39.1-2500 µg/mL



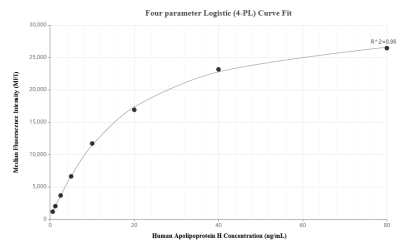
Plasma of six individual healthy human donors was measured. The human APOH concentration of detected samples was determined to be 51.16 µg/mL with a range of 38.03 - 72.18 µg/mL



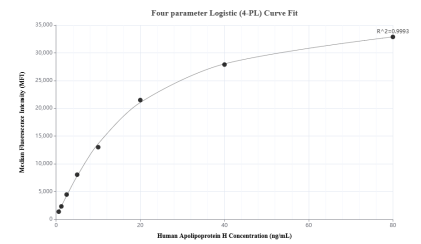
The mean APOH concentration was determined to be 21.74 ng/mL in HepG2 cell extract based on a 1.0 mg/mL extract load.



Serum of six individual healthy human donors was measured. The human APOH concentration of detected samples was determined to be 69.62 µg/mL with a range of 55.50 - 88.74 µg/mL



Cytometric bead array standard curve of MP01667-2, APOH Recombinant Matched Antibody Pair, PBS Only. Capture antibody: 84943-1-PBS. Detection antibody: 84943-3-PBS. Standard: Eg3084. Range: 0.625-80 ng/mL



Cytometric bead array standard curve of MP01667-1, APOH Recombinant Matched Antibody Pair, PBS Only. Capture antibody: 84943-1-PBS. Detection antibody: 84943-2-PBS. Standard: Eg3084. Range: 0.625-80 ng/mL