

For Research Use Only

SEC31A Recombinant antibody

Catalog Number: 84942-4-RR



Basic Information

Catalog Number:

84942-4-RR

Size:

100ul, Concentration: 1000 µg/ml by
Nanodrop;

Source:

Rabbit

Isotype:

IgG

Immunogen Catalog Number:

AG12314

GenBank Accession Number:

BC084583

GeneID (NCBI):

22872

UNIPROT ID:

O94979

Full Name:

SEC31 homolog A (S. cerevisiae)

Calculated MW:

1220 aa, 133 kDa

Observed MW:

118-140 kDa

Purification Method:

Protein A purification

CloneNo.:

242531E2

Recommended Dilutions:

WB 1:5000-1:50000

IP 0.5-4.0 µg for 1.0-3.0 mg of total
protein lysate

IF/ICC 1:250-1:1000

Applications

Tested Applications:

WB, IF/ICC, IP, ELISA

Species Specificity:

human

Positive Controls:

WB : HeLa cells, HepG2 cells, MCF-7 cells, Jurkat cells

IP : HeLa cells,

IF/ICC : HeLa cells,

Background Information

COP1-coated vesicles mediate anterograde transport from the ER to the Golgi apparatus. COP1 is composed of three parts: two coat protein complexes (Sec23/24 complex and Sec13/31 complex) and one small GTP-binding protein, Sar1 (PMID: 9568718). The sec31 subunit of the coat complex has been shown to be essential for vesicle formation and ER-Golgi transport (PMID: 10788476). Two mammalian homologs of yeast sec31p, Sec31A and Sec31B, share about 40% amino acid identity. Sec31A transcripts are ubiquitously and abundantly expressed.

Storage

Storage:

Store at -20°C. Stable for one year after shipment.

Storage Buffer:

PBS with 0.02% sodium azide and 50% glycerol pH 7.3.

Aliquoting is unnecessary for -20°C storage

*** 20ul sizes contain 0.1% BSA

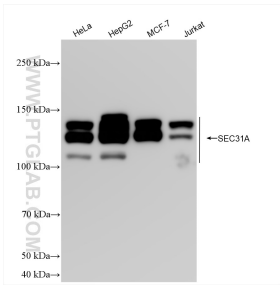
For technical support and original validation data for this product please contact:

T: 1 (888) 4PTGLAB (1-888-478-4522) (toll free
in USA), or 1(312) 455-8498 (outside USA)

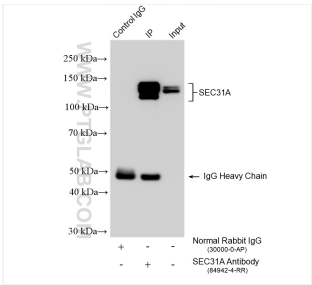
E: proteintech@ptglab.com
W: ptglab.com

This product is exclusively available under Proteintech Group brand and is not available to purchase from any other manufacturer.

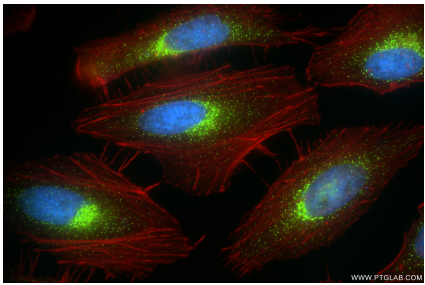
Selected Validation Data



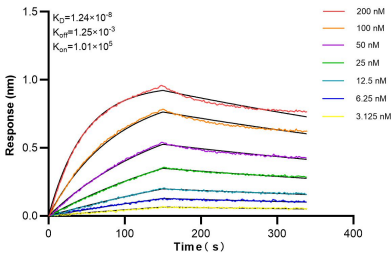
Various lysates were subjected to SDS PAGE followed by western blot with 84942-4-RR (SEC31A antibody) at dilution of 1:10000 incubated at room temperature for 1.5 hours.



IP result of anti-SEC31A (IP:84942-4-RR, 4ug; Detection:84942-4-RR 1:4000) with HeLa cells lysate 1880 ug.



Immunofluorescent analysis of (4% PFA) fixed HeLa cells using SEC31A antibody (84942-4-RR, Clone: 242531E2) at dilution of 1:500 and CoraLite®488-Conjugated Goat Anti-Rabbit IgG(H+L) (SA00013-2), CL594-Phalloidin (red).



Bi-layer interferometry (BLI) kinetic assays of 84942-4-RR against Human SEC31A were performed. The affinity constant is 12.4 nM.