

For Research Use Only

SEC31A Recombinant antibody, PBS Only

Catalog Number: 84942-4-PBS



Basic Information

Catalog Number: 84942-4-PBS	GenBank Accession Number: BC084583	Purification Method: Protein A purification
Size: 100ug , Concentration: 1 mg/ml by Nanodrop;	GeneID (NCBI): 22872	CloneNo.: 242531E2
Source: Rabbit	UNIPROT ID: O94979	
Isotype: IgG	Full Name: SEC31 homolog A (S. cerevisiae)	
Immunogen Catalog Number: AG12314	Calculated MW: 1220 aa, 133 kDa	
	Observed MW: 118-140 kDa	

Applications

Tested Applications:
WB, IF/ICC, IP, Indirect ELISA

Species Specificity:
human

Background Information

COPII-coated vesicles mediate anterograde transport from the ER to the Golgi apparatus. COPII is composed of three parts: two coat protein complexes (Sec23/24 complex and Sec13/31 complex) and one small GTP-binding protein, Sar1 (PMID: 9568718). The sec31 subunit of the coat complex has been shown to be essential for vesicle formation and ER-Golgi transport (PMID: 10788476). Two mammalian homologs of yeast sec31p, Sec31A and Sec31B, share about 40% amino acid identity. Sec31A transcripts are ubiquitously and abundantly expressed.

Storage

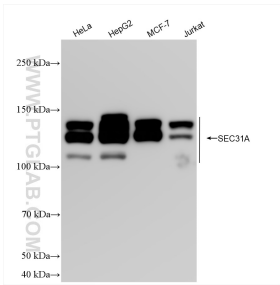
Storage:
Store at -80°C.

Storage Buffer:
PBS Only

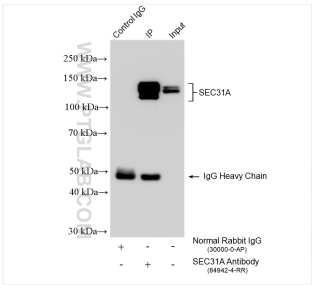
For technical support and original validation data for this product please contact:
T: 1 (888) 4PTGLAB (1-888-478-4522) (toll free in USA), or 1(312) 455-8498 (outside USA)
E: proteintech@ptglab.com
W: ptglab.com

This product is exclusively available under Proteintech Group brand and is not available to purchase from any other manufacturer.

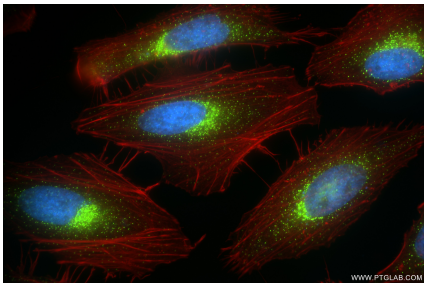
Selected Validation Data



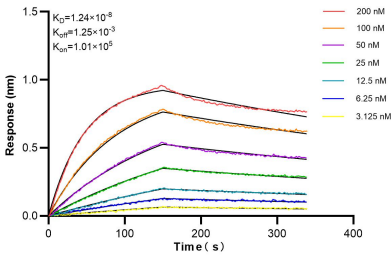
Various lysates were subjected to SDS PAGE followed by western blot with 84942-4-RR (SEC31A antibody) at dilution of 1:10000 incubated at room temperature for 1.5 hours. This data was developed using the same antibody clone with 84942-4-PBS in a different storage buffer formulation.



IP result of anti-SEC31A (IP:84942-4-RR, 4ug; Detection:84942-4-RR 1:4000) with HeLa cells lysate 1880 ug. This data was developed using the same antibody clone with 84942-4-PBS in a different storage buffer formulation.



Immunofluorescent analysis of (4% PFA) fixed HeLa cells using SEC31A antibody (84942-4-RR, Clone: 242531E2) at dilution of 1:500 and CoraLite®488-Conjugated Goat Anti-Rabbit IgG(H+L) (SA00013-2), CL594-Phalloidin (red). This data was developed using the same antibody clone with 84942-4-PBS in a different storage buffer formulation.



Bioluminescence resonance transfer (BLI) kinetic assays of 84942-4-RR against Human SEC31A were performed. The affinity constant is 12.4 nM.