

For Research Use Only

PPP1CB Recombinant antibody

Catalog Number: 84938-5-RR



Basic Information

Catalog Number: 84938-5-RR	GenBank Accession Number: BC002697	Purification Method: Protein A purification
Size: 100ul , Concentration: 1000 µg/ml by Nanodrop;	GeneID (NCBI): 5500	CloneNo.: 242547H7
Source: Rabbit	UNIPROT ID: P62140	Recommended Dilutions: WB 1:5000-1:50000 IF/ICC 1:250-1:1000
Isotype: IgG	Full Name: protein phosphatase 1, catalytic subunit, beta isoform	
Immunogen Catalog Number: AG0183	Calculated MW: 37 kDa	
	Observed MW: 35-37 kDa	

Applications

Tested Applications: WB, IF/ICC, FC (Intra), ELISA	Positive Controls:
Species Specificity: human, mouse, rat	WB : A431 cells, HeLa cells, HepG2 cells, MCF- cells, Jurkat cells, mouse brain tissue, rat brain tissue
	IF/ICC : MCF-7 cells, A549 cells

Background Information

Protein phosphatase 1 (PP1) is the main eukaryotic protein serine/threonine phosphatase that regulates an enormous variety of cellular processes including protein-protein interactions, gene transcription, cell-cycle progression and apoptosis. It is a trimeric complex composed of a regulatory subunit, a variable subunit and a catalytic subunit. The catalytic subunit of PP1 (PP1c) can interact with amount of regulatory subunits in vivo that target it to particular subcellular locations and regulate its activity towards specific substrates.

Storage

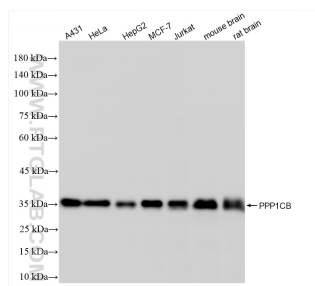
Storage:
Store at -20°C. Stable for one year after shipment.
Storage Buffer:
PBS with 0.02% sodium azide and 50% glycerol pH 7.3.
Aliquoting is unnecessary for -20°C storage

*** 20ul sizes contain 0.1% BSA

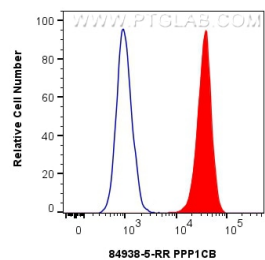
For technical support and original validation data for this product please contact:
T: 1 (888) 4PTGLAB (1-888-478-4522) (toll free in USA), or 1(312) 455-8498 (outside USA)
E: proteintech@ptglab.com
W: ptglab.com

This product is exclusively available under Proteintech Group brand and is not available to purchase from any other manufacturer.

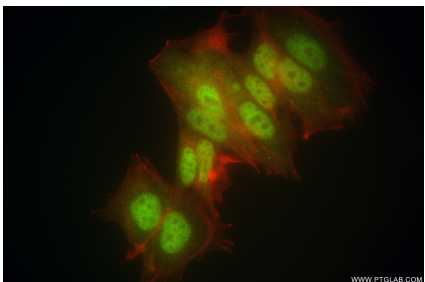
Selected Validation Data



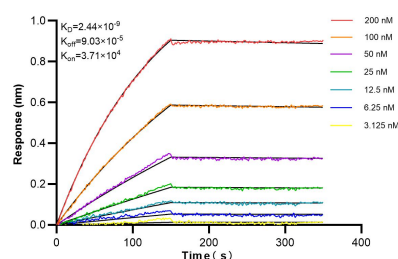
Various lysates were subjected to SDS PAGE followed by western blot with 84938-5-RR (PPP1CB antibody) at dilution of 1:10000 incubated at room temperature for 1.5 hours.



1x10⁶ Jurkat cells were intracellularly stained with 0.25 ug PPP1CB Recombinant antibody (84938-5-RR, Clone:242547H7) and CoraLite®488-Conjugated Goat Anti-Rabbit IgG(H+L) (SA00013-2) (red), or 0.25 ug Rabbit IgG Isotype Control RecAb (98136-1-RR, Clone: 240953C9) (blue). Cells were fixed with 4% PFA and permeabilized with Flow Cytometry Perm Buffer (PF00011-C).



Immunofluorescent analysis of (4% PFA) fixed MCF-7 cells using PPP1CB antibody (84938-5-RR, Clone: 242547H7) at dilution of 1:500 and CoraLite®488-Conjugated Goat Anti-Rabbit IgG(H+L) (SA00013-2), CL594-Phalloidin (red).



Biolayer interferometry (BLI) kinetic assays of 84938-5-RR against Human PPP1CB were performed. The affinity constant is 2.44 nM.