

For Research Use Only

Ninein Recombinant antibody, PBS Only (Detector)

Catalog Number: 84937-1-PBS



Basic Information

Catalog Number: 84937-1-PBS	GenBank Accession Number: BC034708	Purification Method: Protein A purification
Size: 100ug, Concentration: 1 mg/ml by Nanodrop;	GeneID (NCBI): 51199	CloneNo.: 242525B7
Source: Rabbit	UNIPROT ID: Q8N4C6	
Isotype: IgG	Full Name: ninein (GSK3B interacting protein)	
Immunogen Catalog Number: AG3688	Calculated MW: 2090 aa, 243 kDa	
	Observed MW: 240-255 kDa	

Applications

Tested Applications:
WB, Cytometric bead array, Sandwich ELISA, Indirect
ELISA, Sample test

Species Specificity:
human

Product Information

84937-1-PBS targets Ninein as part of a matched antibody pair:

MP01704-2: 84937-3-PBS capture and 84937-1-PBS detection (validated in Cytometric bead array, Sandwich ELISA)

Unconjugated rabbit recombinant monoclonal antibody in PBS only (BSA and azide free) storage buffer at a concentration of 1 mg/mL, ready for conjugation. Created using Proteintech's proprietary in-house recombinant technology. Recombinant production enables unrivalled batch-to-batch consistency, easy scale-up, and future security of supply.

This conjugation ready format makes antibodies ideal for use in many applications including: ELISAs, multiplex assays requiring matched pairs, mass cytometry, and multiplex imaging applications. Antibody use should be optimized by the end user for each application and assay.

Background Information

Ninein is a large coiled-coil protein that associates with the subdistal appendages of the mother centriole and the minus-ends of both centrioles. Ninein interacts with γ -tubulin and microtubule nucleation and anchoring at the centrosomes.

Storage

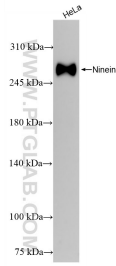
Storage:
Store at -80°C.

Storage Buffer:
PBS Only

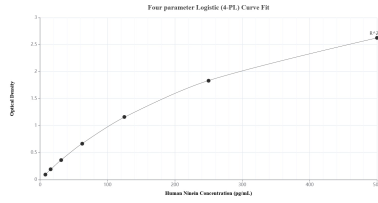
For technical support and original validation data for this product please contact:
T: 1 (888) 4PTGLAB (1-888-478-4522) (toll free in USA), or 1(312) 455-8498 (outside USA) E: proteintech@ptglab.com
W: ptglab.com

This product is exclusively available under Proteintech Group brand and is not available to purchase from any other manufacturer.

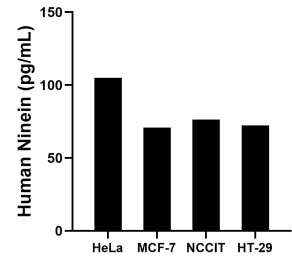
Selected Validation Data



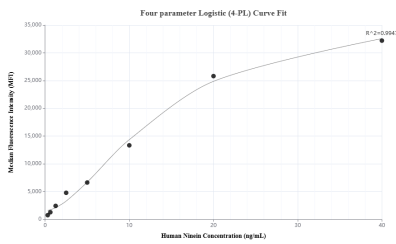
HeLa cells were subjected to SDS PAGE followed by western blot with 84937-1-RR (Ninein antibody) at dilution of 1:3000 incubated at room temperature for 1.5 hours. This data was developed using the same antibody clone with 84937-1-PBS in a different storage buffer formulation.



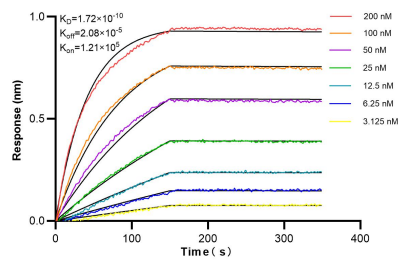
Sandwich ELISA standard curve of MP01704-2, Human Ninein Recombinant Matched Antibody Pair - PBS only. 84937-3-PBS was coated to a plate as the capture antibody and incubated with serial dilutions of standard Ag3688. 84937-1-PBS was HRP conjugated as the detection antibody. Range: 7.81-500 pg/mL



The mean Ninein concentration was determined to be 105.0 pg/mL in HeLa cell extract based on a 1.0 mg/mL extract load, 70.8 pg/mL in MCF-7 cell extract based on a 1.2 mg/mL extract load, 76.3 pg/mL in NCCIT cell extract based on a 1.9 mg/mL extract load and 72.4 pg/mL in HT-29 cell extract based on a 1.2 mg/mL extract load.



Cytometric bead array standard curve of MP01704-2, Ninein Recombinant Matched Antibody Pair, PBS Only. Capture antibody: 84937-3-PBS. Detection antibody: 84937-1-PBS. Standard: Ag3688. Range: 0.313-40 ng/mL



Biolayer interferometry (BLI) kinetic assays of 84937-1-RR against Human Ninein were performed. The affinity constant is 0.172 nM.