

For Research Use Only

# PSMD3 Recombinant antibody

Catalog Number: 84928-2-RR



## Basic Information

<b>Catalog Number:</b> 84928-2-RR	<b>GenBank Accession Number:</b> BC012302	<b>Purification Method:</b> Protein A purification
<b>Size:</b> 100ul, Concentration: 1000 µg/ml by Nanodrop;	<b>GeneID (NCBI):</b> 5709	<b>CloneNo.:</b> 242470D4
<b>Source:</b> Rabbit	<b>UNIPROT ID:</b> O43242	<b>Recommended Dilutions:</b> WB 1:5000-1:50000 IHC 1:500-1:2000
<b>Isotype:</b> IgG	<b>Full Name:</b> proteasome (prosome, macropain) 26S subunit, non-ATPase, 3	
<b>Immunogen Catalog Number:</b> AG2684	<b>Calculated MW:</b> 534 aa, 61 kDa	
	<b>Observed MW:</b> 61 kDa	

## Applications

**Tested Applications:**  
WB, IHC, FC (Intra), ELISA

**Species Specificity:**  
human

### Positive Controls:

**WB:** A549 cells, HeLa cells, HEK-293 cells, U2OS cells, U-251 cells

**IHC:** human colon cancer tissue,

**Note-IHC:** suggested antigen retrieval with **TE buffer pH 9.0; (\*) Alternatively, antigen retrieval may be performed with citrate buffer pH 6.0**

## Background Information

PSMD3, encoding proteasome (prosome, macropain) 26S subunit, non-ATPase 3, a member of the 26S proteasome family. PSMD3 is expressed in most of the tissues according to the RNA-Seq database. It has been reported that PSMD3 genotypes are associated with white blood cell (WBC) and neutrophil counts and have interactions with dietary fatty acids and carbohydrates on glucose-related traits. PSMD3 is located at ch17q21 and encodes a protein with a molecular weight of 61 kDa (PMID: 31013812).

## Storage

**Storage:**  
Store at -20°C. Stable for one year after shipment.

**Storage Buffer:**  
PBS with 0.02% sodium azide and 50% glycerol pH 7.3.

**Aliquoting is unnecessary for -20°C storage**

**\*\*\* 20ul sizes contain 0.1% BSA**

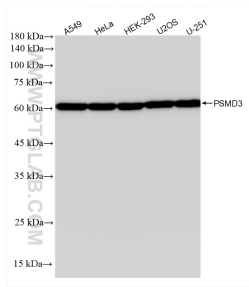
For technical support and original validation data for this product please contact:

T: 1 (888) 4PTGLAB (1-888-478-4522) (toll free in USA), or 1(312) 455-8498 (outside USA)

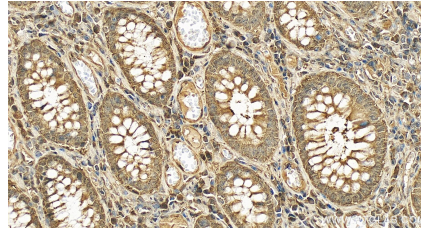
E: [proteintech@ptglab.com](mailto:proteintech@ptglab.com)  
W: [ptglab.com](http://ptglab.com)

**This product is exclusively available under Proteintech Group brand and is not available to purchase from any other manufacturer.**

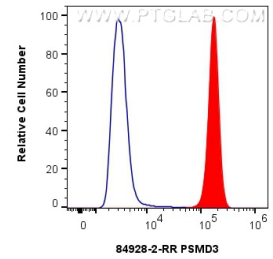
## Selected Validation Data



Various lysates were subjected to SDS PAGE followed by western blot with 84928-2-RR (PSMD3 antibody) at dilution of 1:10000 incubated at room temperature for 1.5 hours.



Immunohistochemical analysis of paraffin-embedded human colon cancer tissue slide using 84928-2-RR (PSMD3 antibody) at dilution of 1:1000 (under 40x lens). Heat mediated antigen retrieval with Tris-EDTA buffer (pH 9.0).



$1 \times 10^6$  A549 cells were intracellularly stained with 0.25  $\mu$ g PSMD3 Recombinant antibody (84928-2-RR, Clone:242470D4) and CoraLite@488-Conjugated Goat Anti-Rabbit IgG(H+L) (SA00013-2) (red), or 0.25  $\mu$ g Rabbit IgG Isotype Control Recombinant Antibody (98136-1-RR, Clone: 240953C9) (blue). Cells were fixed with 4% PFA and permeabilized with Flow Cytometry Perm Buffer (PF00011-C).