

For Research Use Only

PSMD3 Recombinant antibody, PBS Only (Capture)

Catalog Number: 84928-2-PBS



Basic Information

Catalog Number: 84928-2-PBS	GenBank Accession Number: BC012302	Purification Method: Protein A purification
Size: 100ug, Concentration: 1 mg/ml by Nanodrop;	GeneID (NCBI): 5709	CloneNo.: 242470D4
Source: Rabbit	UNIPROT ID: O43242	
Isotype: IgG	Full Name: proteasome (prosome, macropain) 26S subunit, non-ATPase, 3	
Immunogen Catalog Number: AG2684	Calculated MW: 534 aa, 61 kDa	
	Observed MW: 61 kDa	

Applications

Tested Applications:
WB, IHC, FC (Intra), Cytometric bead array, Indirect ELISA

Species Specificity:
human

Product Information

84928-2-PBS targets PSMD3 as part of a matched antibody pair.

MP01691-2: 84928-2-PBS capture and 84928-1-PBS detection (validated in Cytometric bead array)

Unconjugated rabbit recombinant monoclonal antibody in PBS only (BSA and azide free) storage buffer at a concentration of 1 mg/mL, ready for conjugation. Created using Proteintech's proprietary in-house recombinant technology. Recombinant production enables unrivalled batch-to-batch consistency, easy scale-up, and future security of supply.

This conjugation ready format makes antibodies ideal for use in many applications including: ELISAs, multiplex assays requiring matched pairs, mass cytometry, and multiplex imaging applications. Antibody use should be optimized by the end user for each application and assay.

Background Information

PSMD3, encoding proteasome (prosome, macropain) 26S subunit, non-ATPase 3, a member of the 26S proteasome family. PSMD3 is expressed in most of the tissues according to the RNA-Seq database. It has been reported that PSMD3 genotypes are associated with white blood cell (WBC) and neutrophil counts and have interactions with dietary fatty acids and carbohydrates on glucose-related traits. PSMD3 is located at ch17q21 and encodes a protein with a molecular weight of 61 kDa (PMID: 31013812).

Storage

Storage:
Store at -80°C.

Storage Buffer:
PBS Only

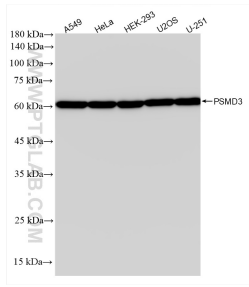
For technical support and original validation data for this product please contact:

T: 1 (888) 4PTGLAB (1-888-478-4522) (toll free in USA), or 1(312) 455-8498 (outside USA)

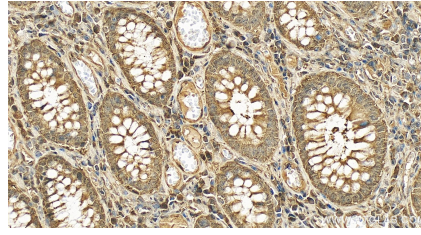
E: proteintech@ptglab.com
W: ptglab.com

This product is exclusively available under Proteintech Group brand and is not available to purchase from any other manufacturer.

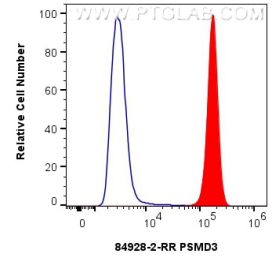
Selected Validation Data



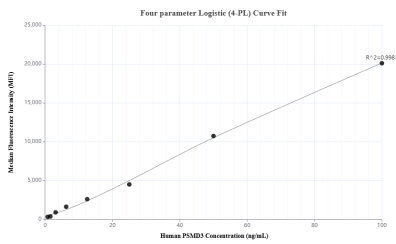
Various lysates were subjected to SDS PAGE followed by western blot with 84928-2-RR (PSMD3 antibody) at dilution of 1:10000 incubated at room temperature for 1.5 hours. This data was developed using the same antibody clone with 84928-2-PBS in a different storage buffer formulation.



Immunohistochemical analysis of paraffin-embedded human colon cancer tissue slide using 84928-2-RR (PSMD3 antibody) at dilution of 1:1000 (under 40x lens). Heat mediated antigen retrieval with Tris-EDTA buffer (pH 9.0). This data was developed using the same antibody clone with 84928-2-PBS in a different storage buffer formulation.



1x10⁶ A549 cells were intracellularly stained with 0.25 ug PSMD3 Recombinant antibody (84928-2-RR, Clone:242470D4) and CoraLite®488-Conjugated Goat Anti-Rabbit IgG(H+L) (SA00013-2)(red), or 0.25 ug Rabbit IgG Isotype Control Recombinant Antibody (98136-1-RR, Clone: 240953C9) (blue). Cells were fixed with 4% PFA and permeabilized with Flow Cytometry Perm Buffer (PF00011-C). This data was developed using the same antibody clone with 84928-2-PBS in a



Cytometric bead array standard curve of MP01691-2, PSMD3 Recombinant Matched Antibody Pair, PBS Only. Capture antibody: 84928-2-PBS. Detection antibody: 84928-1-PBS. Standard: Ag2684. Range: 0.781-100 ng/mL.