

For Research Use Only

# PRICKLE1 Recombinant antibody

Catalog Number:84926-1-RR



## Basic Information

<b>Catalog Number:</b> 84926-1-RR	<b>GenBank Accession Number:</b> BC114939	<b>Purification Method:</b> Protein A purification
<b>Size:</b> 100ul , Concentration: 1000 µg/ml by Nanodrop;	<b>GeneID (NCBI):</b> 144165	<b>CloneNo.:</b> 242506A8
<b>Source:</b> Rabbit	<b>UNIPROT ID:</b> Q96MT3	<b>Recommended Dilutions:</b> WB 1:5000-1:50000
<b>Isotype:</b> IgG	<b>Full Name:</b> prickle homolog 1 (Drosophila)	
<b>Immunogen Catalog Number:</b> AG18407	<b>Calculated MW:</b> 831 aa, 94 kDa	
	<b>Observed MW:</b> 94 kDa	

## Applications

<b>Tested Applications:</b> WB, ELISA	<b>Positive Controls:</b> WB : MDA-MB-231 cells,
<b>Species Specificity:</b> human	

## Background Information

PRICKLE1, also known as RILP, EPM1B, encodes a cytoplasmic protein with an N-terminal PET (Pk, Espinas, Testin) domain, three LIM domains and a C-terminal PKH (prickle homologous) domain. PRICKLE1 is expressed at the highest levels in placenta and lower levels in lung, liver, kidney and pancreas(PMID: 12525887). PRICKLE1 localizes to the nuclear membrane and has been implicated in the nuclear trafficking of the transcription repressors REST/NRSF and REST4. Mutations in PRICKLE1 have been linked to progressive myoclonus epilepsy(PMID: 18976727).

## Storage

**Storage:**  
Store at -20°C. Stable for one year after shipment.  
**Storage Buffer:**  
PBS with 0.02% sodium azide and 50% glycerol pH 7.3.  
Aliquoting is unnecessary for -20°C storage

\*\*\* 20ul sizes contain 0.1% BSA

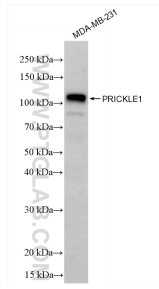
For technical support and original validation data for this product please contact:

T: 1 (888) 4PTGLAB (1-888-478-4522) (toll free  
in USA), or 1(312) 455-8498 (outside USA)

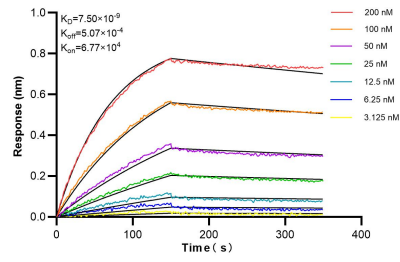
E: proteintech@ptglab.com  
W: ptglab.com

This product is exclusively available under Proteintech Group brand and is not available to purchase from any other manufacturer.

## Selected Validation Data



MDA-MB-231 cells were subjected to SDS PAGE followed by western blot with 84926-1-RR (PRICKLE1 antibody) at dilution of 1:10000 incubated at room temperature for 1.5 hours.



Biolayer interferometry (BLI) kinetic assays of 84926-1-RR against Human PRICKLE1 were performed. The affinity constant is 7.50 nM.