

For Research Use Only

RAD21 Recombinant antibody

Catalog Number: 84920-4-RR

Featured Product



Basic Information

Catalog Number: 84920-4-RR	GenBank Accession Number: BC050381	Purification Method: Protein A purification
Size: 100ul , Concentration: 1000 µg/ml by Nanodrop;	GeneID (NCBI): 5885	CloneNo.: 242172E3
Source: Rabbit	UNIPROT ID: O60216	Recommended Dilutions: WB 1:5000-1:50000 IF/ICC 1:250-1:1000
Isotype: IgG	Full Name: RAD21 homolog (S. pombe)	
Immunogen Catalog Number: AG25481	Calculated MW: 631 aa, 72 kDa	
	Observed MW: 140 kDa	

Applications

Tested Applications: WB, IF/ICC, FC (Intra), ELISA	Positive Controls: WB : HeLa cells, IF/ICC : HeLa cells,
Species Specificity: human, mouse, rat	

Background Information

RAD21, also named as Nuclear matrix protein 1, is a 631 amino acid protein, which belongs to the rad21 family. The calculated molecular weight of RAD21 is 72 kDa, but the phosphorylated RAD21 is about 120 kDa. The protein encoded by this gene is highly similar to the gene product of Schizosaccharomyces pombe rad21, a gene involved in the repair of DNA double-strand breaks, as well as in chromatid cohesion during mitosis. This protein is a nuclear phospho-protein, which becomes hyperphosphorylated in cell cycle M phase. The highly regulated association of this protein with mitotic chromatin specifically at the centromere region suggests its role in sister chromatid cohesion in mitotic cells.

Storage

Storage:
Store at -20°C. Stable for one year after shipment.
Storage Buffer:
PBS with 0.02% sodium azide and 50% glycerol pH 7.3.
Aliquoting is unnecessary for -20°C storage

*** 20ul sizes contain 0.1% BSA

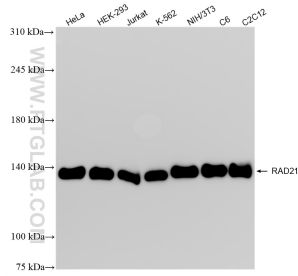
For technical support and original validation data for this product please contact:

T: 1 (888) 4PTGLAB (1-888-478-4522) (toll free in USA), or 1(312) 455-8498 (outside USA)

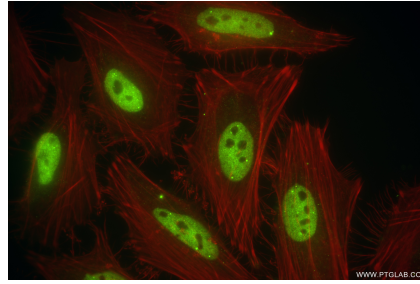
E: proteintech@ptglab.com
W: ptglab.com

This product is exclusively available under Proteintech Group brand and is not available to purchase from any other manufacturer.

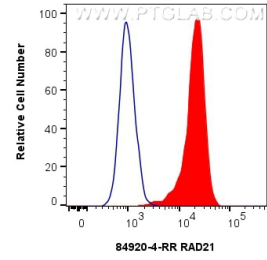
Selected Validation Data



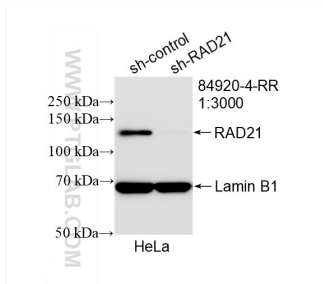
Various lysates were subjected to SDS PAGE followed by western blot with 84920-4-RR (RAD21 antibody) at dilution of 1:10000 incubated at room temperature for 1.5 hours.



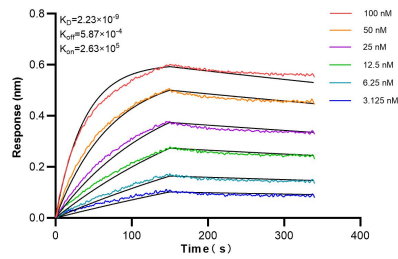
Immunofluorescent analysis of (4% PFA) fixed HeLa cells using RAD21 antibody (84920-4-RR, Clone: 242172E3) at dilution of 1:500 and CoraLite® 488-Conjugated Goat Anti-Rabbit IgG(H+L) (SA00013-2), CL594-Phalloidin (red).



1x10⁶ Jurkat cells were intracellularly stained with 0.25 ug RAD21 Recombinant antibody (84920-4-RR, Clone:242172E3) and CoraLite® 488-Conjugated Goat Anti-Rabbit IgG(H+L) (SA00013-2) (red), or 0.25 ug Rabbit IgG Isotype Control RecAb (98136-1-RR, Clone: 240953C9) (blue). Cells were fixed with 4% PFA and permeabilized with Flow Cytometry Perm Buffer (PF00011-C).



WB result of RAD21 antibody (84920-4-RR; 1:3000; incubated at room temperature for 1.5 hours) with sh-Control and sh-RAD21 transfected HeLa cells.



Biolayer interferometry (BLI) kinetic assays of 84920-4-RR against Human RAD21 were performed. The affinity constant is 2.23 nM.