

For Research Use Only

GPR56 Recombinant antibody, PBS Only (Capture)

Catalog Number: 84915-1-PBS



Basic Information

Catalog Number: 84915-1-PBS	GenBank Accession Number: NM_001145771.2	Purification Method: Protein A purification
Size: 100ug, Concentration: 1 mg/ml by Nanodrop;	GeneID (NCBI): 9289	CloneNo.: 242249A7
Source: Rabbit	UNIPROT ID: Q9Y653	
Isotype: IgG	Full Name: G protein-coupled receptor 56	
	Calculated MW: 78 kDa	
	Observed MW: 65 kDa	

Applications

Tested Applications:
WB, Cytometric bead array, Sandwich ELISA, Indirect
ELISA, Sample test

Species Specificity:
human

Product Information

84915-1-PBS targets GPR56 as part of a matched antibody pair:

MP01673-1: 84915-1-PBS capture and 84915-2-PBS detection (validated in Cytometric bead array, Sandwich ELISA)

MP01673-2: 84915-1-PBS capture and 84915-3-PBS detection (validated in Cytometric bead array)

Unconjugated rabbit recombinant monoclonal antibody in PBS only (BSA and azide free) storage buffer at a concentration of 1 mg/mL, ready for conjugation. Created using Proteintech's proprietary in-house recombinant technology. Recombinant production enables unrivalled batch-to-batch consistency, easy scale-up, and future security of supply.

This conjugation ready format makes antibodies ideal for use in many applications including: ELISAs, multiplex assays requiring matched pairs, mass cytometry, and multiplex imaging applications. Antibody use should be optimized by the end user for each application and assay.

Background Information

GPR56 (G-protein-coupled receptor 56, also named ADGRG1) is a member of the adhesion G-protein coupled receptor (aGPCR) family and one of the important players in the normal development of the brain. It plays a pivotal role in diverse neurobiological processes, including cortical formation, oligodendrocyte development, and myelination (PMID: 32798453). Moreover, GPR56 has been reported to regulate VEGF secretion and angiogenesis in melanoma (PMID: 37579299).

Storage

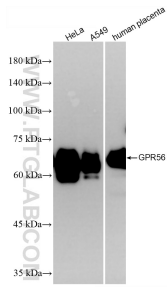
Storage:
Store at -80°C.

Storage Buffer:
PBS Only

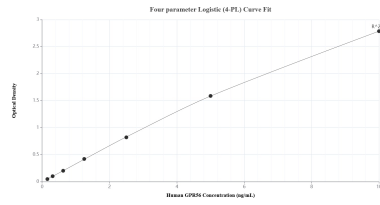
For technical support and original validation data for this product please contact:
T: 1 (888) 4PTGLAB (1-888-478-4522) (toll free in USA), or 1(312) 455-8498 (outside USA) E: proteintech@ptglab.com W: ptglab.com

This product is exclusively available under Proteintech Group brand and is not available to purchase from any other manufacturer.

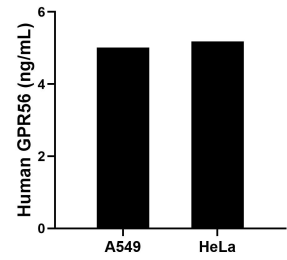
Selected Validation Data



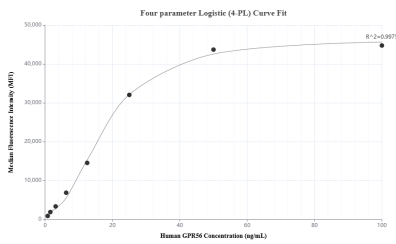
HeLa cells were subjected to SDS PAGE followed by western blot with 84915-1-RR (GPR56 antibody) at dilution of 1:5000 incubated at room temperature for 1.5 hours. This data was developed using the same antibody clone with 84915-1-PBS in a different storage buffer formulation.



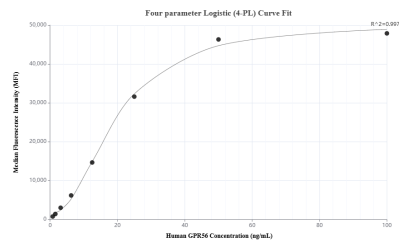
Sandwich ELISA standard curve of MP01673-1, Human GPR56 Recombinant Matched Antibody Pair - PBS only. 84915-1-PBS was coated to a plate as the capture antibody and incubated with serial dilutions of standard Eg2478. 84915-2-PBS was HRP conjugated as the detection antibody. Range: 0.156-10 ng/mL.



The mean GPR56 concentration was determined to be 5.01 ng/mL in A549 cell extract based on a 1.50 mg/mL extract load and 5.18 ng/mL in HeLa cell extract based on a 1.00 mg/mL extract load.



Cytometric bead array standard curve of MP01673-2, GPR56 Recombinant Matched Antibody Pair, PBS Only. Capture antibody: 84915-1-PBS. Detection antibody: 84915-3-PBS. Standard: Eg2478. Range: 0.781-50 ng/mL.



Cytometric bead array standard curve of MP01673-1, GPR56 Recombinant Matched Antibody Pair, PBS Only. Capture antibody: 84915-1-PBS. Detection antibody: 84915-2-PBS. Standard: Eg2478. Range: 0.781-50 ng/mL.