

For Research Use Only

Cleaved Caspase 3/P17/P19 Recombinant antibody, PBS Only (Detector)

Catalog Number: 84912-1-PBS



Basic Information

Catalog Number: 84912-1-PBS	GenBank Accession Number: BC016926	Purification Method: Protein A purification
Size: 100ug , Concentration: 1 mg/ml by Nanodrop;	GeneID (NCBI): 836	CloneNo.: 241972C6
Source: Rabbit	UNIPROT ID: P42574	
Isotype: IgG	Full Name: caspase 3, apoptosis-related cysteine peptidase	
	Calculated MW: 277 aa, 32 kDa	

Applications

Tested Applications:
Sandwich ELISA, Indirect ELISA, Sample test

Species Specificity:
human

Product Information

84912-1-PBS targets Cleaved Caspase 3/P17/P19 as part of a matched antibody pair:

MP00104-4: 84912-2-PBS capture and 84912-1-PBS detection (validated in Sandwich ELISA)

Unconjugated rabbit recombinant monoclonal antibody in PBS only (BSA and azide free) storage buffer at a concentration of 1 mg/mL, ready for conjugation. Created using Proteintech's proprietary in-house recombinant technology. Recombinant production enables unrivalled batch-to-batch consistency, easy scale-up, and future security of supply.

This conjugation ready format makes antibodies ideal for use in many applications including: ELISAs, multiplex assays requiring matched pairs, mass cytometry, and multiplex imaging applications. Antibody use should be optimized by the end user for each application and assay.

Storage

Storage:
Store at -80°C.

Storage Buffer:
PBS Only

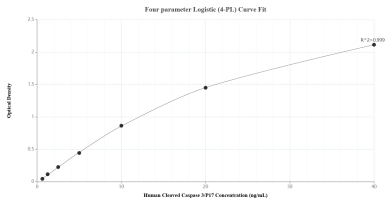
For technical support and original validation data for this product please contact:

T: 1 (888) 4PTGLAB (1-888-478-4522) (toll free
in USA), or 1(312) 455-8498 (outside USA)

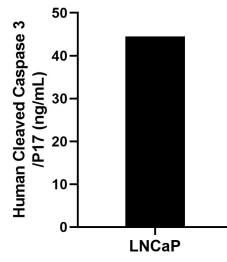
E: proteintech@ptglab.com
W: ptglab.com

This product is exclusively available under Proteintech Group brand and is not available to purchase from any other manufacturer.

Selected Validation Data



Sandwich ELISA standard curve of MP00104-4, Human Cleaved Caspase 3/P17/P19 Recombinant Matched Antibody Pair - PBS only. 84912-2-PBS was coated to a plate as the capture antibody and incubated with serial dilutions of standard SY02375. 84912-1-PBS was HRP conjugated as the detection antibody. Range: 0.625-40 ng/mL



The mean Cleaved Caspase 3/P17 concentration was determined to be 44.51 ng/mL in LNCaP cell extract based on a 2.00 mg/mL extract load.