

For Research Use Only

Di/Tri-Methyl-Histone H3 (Lys4) Recombinant antibody

Catalog Number: 84908-2-RR



Basic Information

Catalog Number: 84908-2-RR	GenBank Accession Number: BC066245	Purification Method: Protein A purification
Size: 100ul , Concentration: 1000 µg/ml by Nanodrop;	GeneID (NCBI): 8350	CloneNo.: 241942D11
Source: Rabbit	UNIPROT ID: P68431	Recommended Dilutions: WB 1:2000-1:10000 IHC 1:500-1:2000 IF/ICC 1:250-1:1000
Isotype: IgG	Full Name: histone cluster 1, H3a	

Applications

Tested Applications:

WB, IHC, IF/ICC, Dot Blot, ELISA

Species Specificity:

human, mouse, rat

**Note-IHC: suggested antigen retrieval with
TE buffer pH 9.0; (*) Alternatively, antigen
retrieval may be performed with citrate
buffer pH 6.0**

Positive Controls:

WB : A549 cells, HEK-293 cells, HSC-T6 cells, HeLa
cells, HepG2 cells, K-562 cells, NIH/3T3 cells

IHC : mouse testis tissue, mouse liver tissue, human
placenta tissue

IF/ICC : HeLa cells,

Storage

Storage:

Store at -20°C. Stable for one year after shipment.

Storage Buffer:

PBS with 0.02% sodium azide and 50% glycerol pH 7.3.

Aliquoting is unnecessary for -20°C storage

*** 20ul sizes contain 0.1% BSA

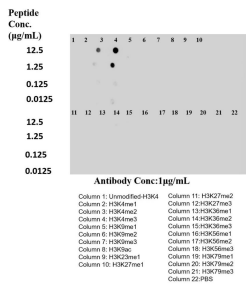
For technical support and original validation data for this product please contact:

T: 1 (888) 4PTGLAB (1-888-478-4522) (toll free
in USA), or 1(312) 455-8498 (outside USA)

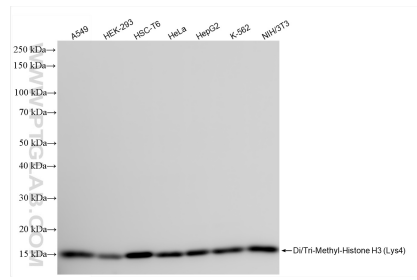
E: proteintech@ptglab.com
W: ptglab.com

This product is exclusively available under Proteintech
Group brand and is not available to purchase from any
other manufacturer.

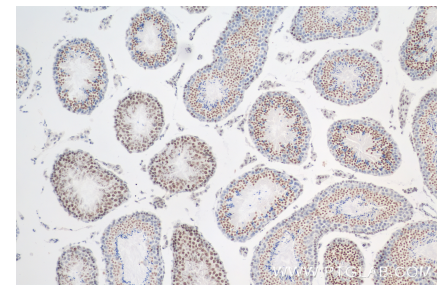
Selected Validation Data



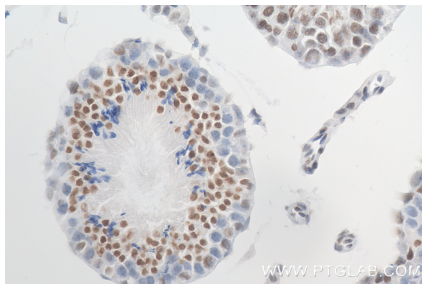
Dot blot analysis was used to confirm the specificity of 84908-2-RR Di/Tri-Methyl-Histone H3 (Lys4) antibody. Peptides were spotted onto NC and probed with antibody at 1 µg/mL. The amount of peptide (ug/mL) spotted is indicated next to each row.



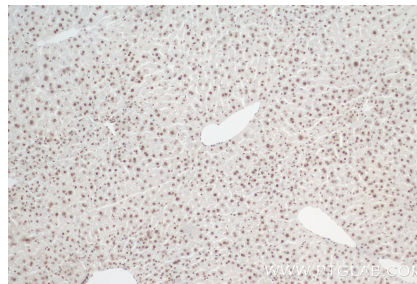
Various lysates were subjected to SDS PAGE followed by western blot with 84908-2-RR (Di/Tri-Methyl-Histone H3 (Lys4) antibody) at dilution of 1:5000 incubated at room temperature for 1.5 hours.



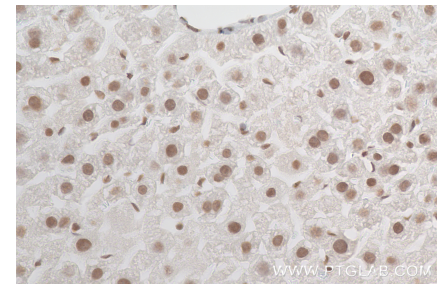
Immunohistochemical analysis of paraffin-embedded mouse testis tissue slide using 84908-2-RR (Di/Tri-Methyl-Histone H3 (Lys4) antibody) at dilution of 1:1000 (under 10x lens). Heat mediated antigen retrieval with Tris-EDTA buffer (pH 9.0).



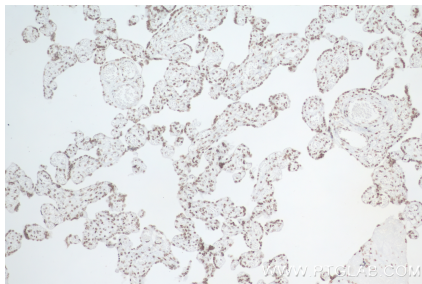
Immunohistochemical analysis of paraffin-embedded mouse testis tissue slide using 84908-2-RR (Di/Tri-Methyl-Histone H3 (Lys4) antibody) at dilution of 1:1000 (under 40x lens). Heat mediated antigen retrieval with Tris-EDTA buffer (pH 9.0).



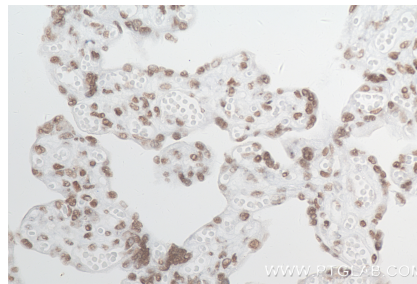
Immunohistochemical analysis of paraffin-embedded mouse liver tissue slide using 84908-2-RR (Di/Tri-Methyl-Histone H3 (Lys4) antibody) at dilution of 1:1000 (under 10x lens). Heat mediated antigen retrieval with Tris-EDTA buffer (pH 9.0).



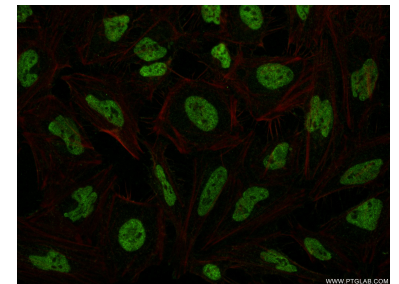
Immunohistochemical analysis of paraffin-embedded mouse liver tissue slide using 84908-2-RR (Di/Tri-Methyl-Histone H3 (Lys4) antibody) at dilution of 1:1000 (under 40x lens). Heat mediated antigen retrieval with Tris-EDTA buffer (pH 9.0).



Immunohistochemical analysis of paraffin-embedded human placenta tissue slide using 84908-2-RR (Di/Tri-Methyl-Histone H3 (Lys4) antibody) at dilution of 1:1000 (under 10x lens). Heat mediated antigen retrieval with Tris-EDTA buffer (pH 9.0).



Immunohistochemical analysis of paraffin-embedded human placenta tissue slide using 84908-2-RR (Di/Tri-Methyl-Histone H3 (Lys4) antibody) at dilution of 1:1000 (under 40x lens). Heat mediated antigen retrieval with Tris-EDTA buffer (pH 9.0).



Immunofluorescent analysis of (4% PFA) fixed HeLa cells using HIST1H3A antibody (84908-2-RR, Clone: 241942D11) at dilution of 1:500 and CoraLite@488-Conjugated Goat Anti-Rabbit IgG(H+L) (SA00013-2), CL594-Phalloidin (red).