

For Research Use Only

RPL7L1 Recombinant antibody

Catalog Number: 84907-1-RR



Basic Information

Catalog Number: 84907-1-RR	GenBank Accession Number: BC058020	Purification Method: Protein A purification
Size: 100ul , Concentration: 1000 ug/ml by Nanodrop;	GeneID (NCBI): 285855	CloneNo.: 242118B2
Source: Rabbit	UNIPROT ID: Q6DK11	Recommended Dilutions: WB 1:2000-1:10000
Isotype: IgG	Full Name: ribosomal protein L7-like 1	
Immunogen Catalog Number: AG10106	Calculated MW: 246 aa, 29 kDa	
	Observed MW: 29 kDa	

Applications

Tested Applications:
WB, ELISA

Species Specificity:
human, mouse, rat

Positive Controls:

WB : HeLa cells, rat pancreas tissue, HepG2 cells, Jurkat cells, MCF-7 cells, HEK-293T cells, NIH/3T3 cells

Storage

Storage:
Store at -20°C. Stable for one year after shipment.

Storage Buffer:
PBS with 0.02% sodium azide and 50% glycerol pH 7.3.

Aliquoting is unnecessary for -20°C storage

*** 20ul sizes contain 0.1% BSA

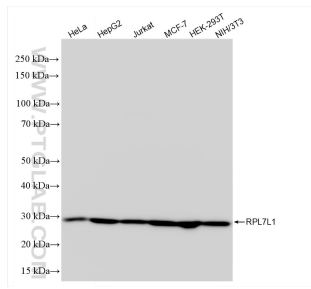
For technical support and original validation data for this product please contact:

T: 1 (888) 4PTGLAB (1-888-478-4522) (toll free
in USA), or 1(312) 455-8498 (outside USA)

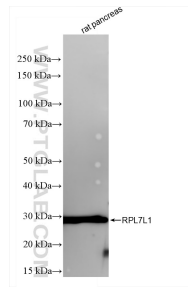
E: proteintech@ptglab.com
W: ptglab.com

This product is exclusively available under Proteintech Group brand and is not available to purchase from any other manufacturer.

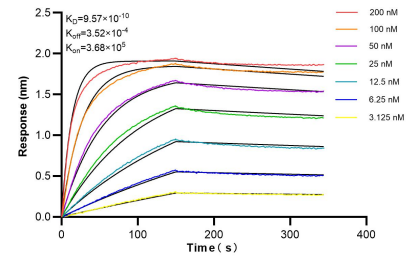
Selected Validation Data



Various lysates were subjected to SDS PAGE followed by western blot with 84907-1-RR (RPL7L1 antibody) at dilution of 1:5000 incubated at room temperature for 1.5 hours.



rat pancreas tissue were subjected to SDS PAGE followed by western blot with 84907-1-RR (RPL7L1 antibody) at dilution of 1:5000 incubated at room temperature for 1.5 hours.



Bi-layer interferometry (BLI) kinetic assays of 84907-1-RR against Human RPL7L1 were performed. The affinity constant is 0.957 nM.