

For Research Use Only

# RPL7L1 Recombinant antibody, PBS Only

Catalog Number: 84907-1-PBS



## Basic Information

<b>Catalog Number:</b> 84907-1-PBS	<b>GenBank Accession Number:</b> BC058020	<b>Purification Method:</b> Protein A purification
<b>Size:</b> 100ug, Concentration: 1 mg/ml by Nanodrop;	<b>GeneID (NCBI):</b> 285855	<b>CloneNo.:</b> 242118B2
<b>Source:</b> Rabbit	<b>UNIPROT ID:</b> Q6DK11	
<b>Isotype:</b> IgG	<b>Full Name:</b> ribosomal protein L7-like 1	
<b>Immunogen Catalog Number:</b> AG10106	<b>Calculated MW:</b> 246 aa, 29 kDa	
	<b>Observed MW:</b> 29 kDa	

## Applications

**Tested Applications:**  
WB, Indirect ELISA

**Species Specificity:**  
human, mouse, rat

## Storage

**Storage:**  
Store at -80°C.

**Storage Buffer:**  
PBS Only

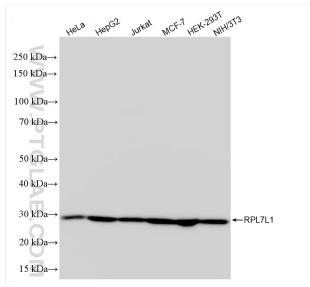
For technical support and original validation data for this product please contact:

T: 1 (888) 4PTGLAB (1-888-478-4522) (toll free in USA), or 1(312) 455-8498 (outside USA)

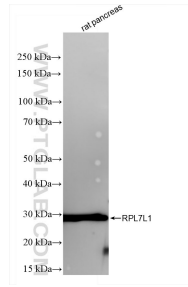
E: [proteintech@ptglab.com](mailto:proteintech@ptglab.com)  
W: [ptglab.com](http://ptglab.com)

This product is exclusively available under Proteintech Group brand and is not available to purchase from any other manufacturer.

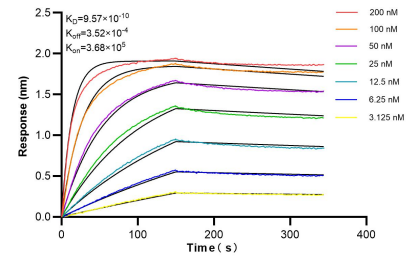
## Selected Validation Data



Various lysates were subjected to SDS PAGE followed by western blot with 84907-1-RR (RPL7L1 antibody) at dilution of 1:5000 incubated at room temperature for 1.5 hours. This data was developed using the same antibody clone with 84907-1-PBS in a different storage buffer formulation.



rat pancreas tissue were subjected to SDS PAGE followed by western blot with 84907-1-RR (RPL7L1 antibody) at dilution of 1:5000 incubated at room temperature for 1.5 hours. This data was developed using the same antibody clone with 84907-1-PBS in a different storage buffer formulation.



Bi-layer interferometry (BLI) kinetic assays of 84907-1-RR against Human RPL7L1 were performed. The affinity constant is 0.957 nM.