

For Research Use Only

Chk1 Recombinant antibody, PBS Only

Catalog Number: 84905-1-PBS



Basic Information

Catalog Number: 84905-1-PBS	GenBank Accession Number: BC004202	Purification Method: Protein A purification
Size: 100ug, Concentration: 1 mg/ml by Nanodrop;	GeneID (NCBI): 1111	CloneNo.: 240618E11
Source: Rabbit	UNIPROT ID: O14757	
Isotype: IgG	Full Name: CHK1 checkpoint homolog (S. pombe)	
Immunogen Catalog Number: AG22993	Calculated MW: 54 kDa	
	Observed MW: 55 kDa	

Applications

Tested Applications:
WB, IF/ICC, FC (Intra), Indirect ELISA

Species Specificity:
human

Background Information

CHEK1(Checkpoint kinase-1) is also named as CHK1 and belongs to the protein kinase superfamily. It is implicated in a circuit in which it activates checkpoints, DNA repair and proliferating cell nuclear antigen and FANCD2 monoubiquitylation(PMID:21389083). CHEK1 protects vertebrate cells against spontaneous chromosome missegregation and is required to sustain anaphase delay when spindle function is disrupted by taxol(PMID:17276342). It has 3 isoforms produced by alternative splicing with the molecular mass of 54 kDa, 44 kDa and 50 kDa.

Storage

Storage:
Store at -80°C.

Storage Buffer:
PBS Only

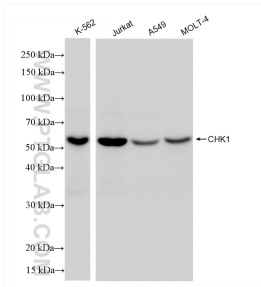
For technical support and original validation data for this product please contact:

T: 1 (888) 4PTGLAB (1-888-478-4522) (toll free in USA), or 1(312) 455-8498 (outside USA)

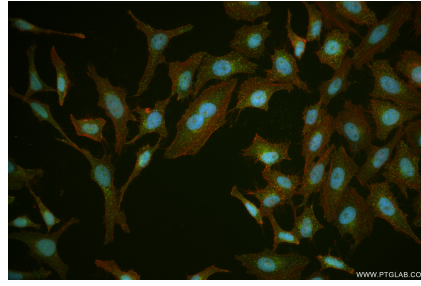
E: proteintech@ptglab.com
W: ptglab.com

This product is exclusively available under Proteintech Group brand and is not available to purchase from any other manufacturer.

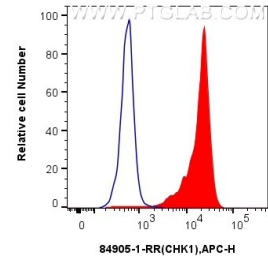
Selected Validation Data



Various lysates were subjected to SDS PAGE followed by western blot with 84905-1-RR (CHK1 antibody) at dilution of 1:10000 incubated at room temperature for 1.5 hours. This data was developed using the same antibody clone with 84905-1-PBS in a different storage buffer formulation.



Immunofluorescent analysis of (4% PFA) fixed HeLa cells using CHK1 antibody (84905-1-RR, Clone: 240618E11) at dilution of 1:250 and CoraLite® 488-Conjugated Goat Anti-Rabbit IgG(H+L) (SA00013-2), CL594-Phalloidin (red). This data was developed using the same antibody clone with 84905-1-PBS in a different storage buffer formulation.



1×10^6 K-562 cells were intracellularly stained with 0.25 ug Chk1 Recombinant antibody (84905-1-RR, Clone:240618E11) and APC-Conjugated Goat Anti-Rabbit IgG(H+L)(red), or 0.25 ug Rabbit IgG Isotype Control Recombinant Antibody (98136-1-RR, Clone: 240953C9) (blue). Cells were fixed and permeabilized with True-Nuclear Transcription Factor Buffer Set. This data was developed using the same antibody clone with 84905-1-PBS in a different storage

