

For Research Use Only

# CD16a Recombinant antibody, PBS Only (Detector)

Catalog Number: 84897-4-PBS



## Basic Information

<b>Catalog Number:</b> 84897-4-PBS	<b>GenBank Accession Number:</b> 2214	<b>Purification Method:</b> Protein A purification
<b>Size:</b> 100ug, Concentration: 1 mg/ml by Nanodrop;	<b>GeneID (NCBI):</b> 2214	<b>CloneNo.:</b> 242426A11
<b>Source:</b> Rabbit	<b>ENSEMBL Gene ID:</b> ENSG00000203747	
<b>Isotype:</b> IgG	<b>Full Name:</b> Fc fragment of IgG, low affinity IIIa, receptor (CD16a)	

## Applications

**Tested Applications:**  
Sandwich ELISA, Indirect ELISA, Sample test

**Species Specificity:**  
human

## Product Information

84897-4-PBS targets CD16a as part of a matched antibody pair:

MP01617-3: 84897-2-PBS capture and 84897-4-PBS detection (validated in Sandwich ELISA)

Unconjugated rabbit recombinant monoclonal antibody in PBS only (BSA and azide free) storage buffer at a concentration of 1 mg/mL, ready for conjugation. Created using Proteintech's proprietary in-house recombinant technology. Recombinant production enables unrivalled batch-to-batch consistency, easy scale-up, and future security of supply.

This conjugation ready format makes antibodies ideal for use in many applications including: ELISAs, multiplex assays requiring matched pairs, mass cytometry, and multiplex imaging applications. Antibody use should be optimized by the end user for each application and assay.

## Storage

**Storage:**  
Store at -80°C.  
**Storage Buffer:**  
PBS Only

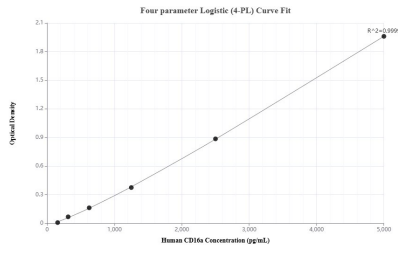
For technical support and original validation data for this product please contact:

T: 1 (888) 4PTGLAB (1-888-478-4522) (toll free in USA), or 1(312) 455-8498 (outside USA)

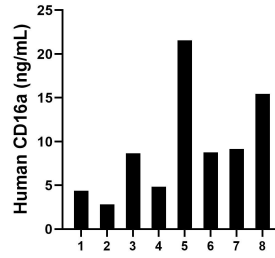
E: [proteintech@ptglab.com](mailto:proteintech@ptglab.com)  
W: [ptglab.com](http://ptglab.com)

**This product is exclusively available under Proteintech Group brand and is not available to purchase from any other manufacturer.**

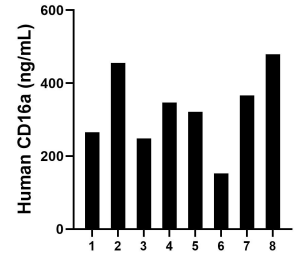
## Selected Validation Data



Sandwich ELISA standard curve of MP01617-3, Human CD16a Recombinant Matched Antibody Pair - PBS only. 84897-2-PBS was coated to a plate as the capture antibody and incubated with serial dilutions of standard Eg2488. 84897-4-PBS was HRP conjugated as the detection antibody. Range: 156.3-5000 pg/mL



Urine of eight individual healthy human donors was measured. The human CD16a concentration of detected samples was determined to be 9.45 ng/mL with a range of 2.83 - 21.56 ng/mL.



Serum of eight individual healthy human donors was measured. The human CD16a concentration of detected samples was determined to be 329.57 ng/mL with a range of 152.51- 455.59 ng/mL.