

For Research Use Only

RFC2 Recombinant antibody

Catalog Number: 84892-1-RR



Basic Information

Catalog Number: 84892-1-RR	GenBank Accession Number: BC002813	Purification Method: Protein A purification
Size: 100ul , Concentration: 1000 µg/ml by Nanodrop;	GeneID (NCBI): 5982	CloneNo.: 242503E12
Source: Rabbit	UNIPROT ID: P35250	Recommended Dilutions: WB 1:5000-1:50000 IHC 1:500-1:2000 IF/ICC 1:250-1:1000
Isotype: IgG	Full Name: replication factor C (activator 1) 2, 40kDa	
Immunogen Catalog Number: AG0663	Calculated MW: 39 kDa	
	Observed MW: 39 kDa	

Applications

Tested Applications:
WB, IHC, IF/ICC, FC (Intra), ELISA

Species Specificity:
human, mouse, rat

Note-IHC: suggested antigen retrieval with TE buffer pH 9.0; (*) Alternatively, antigen retrieval may be performed with citrate buffer pH 6.0

Positive Controls:

WB : HeLa cells, HepG2 cells, K-562 cells, MCF-7 cells, Raji cells, NIH-3T3 cells, HSC-T6 cells

IHC : mouse ovary tissue,

IF/ICC : HeLa cells, NIH/3T3 cells

Background Information

RFC2, also named RFC40, belongs to the activator 1 small subunits family. It is a 39 kDa Activator 1 subunit. It binds ATP. The elongation of primed DNA templates by DNA polymerase delta and epsilon requires the action of the accessory proteins proliferating cell nuclear antigen (PCNA) and activator 1. RFC2 is a constitutively expressed protein essential for both DNA repair and replication. (PMID: 20660762).

Storage

Storage:
Store at -20°C. Stable for one year after shipment.
Storage Buffer:
PBS with 0.02% sodium azide and 50% glycerol pH 7.3.
Aliquoting is unnecessary for -20°C storage

*** 20ul sizes contain 0.1% BSA

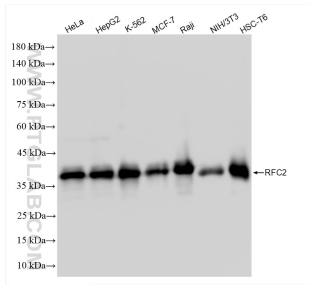
For technical support and original validation data for this product please contact:

T: 1 (888) 4PTGLAB (1-888-478-4522) (toll free in USA), or 1(312) 455-8498 (outside USA)

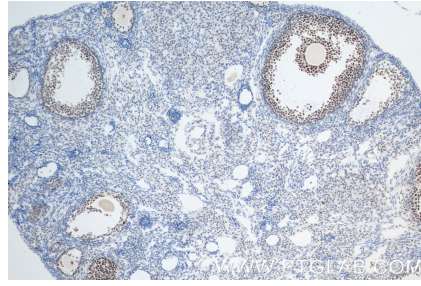
E: proteintech@ptglab.com
W: ptglab.com

This product is exclusively available under Proteintech Group brand and is not available to purchase from any other manufacturer.

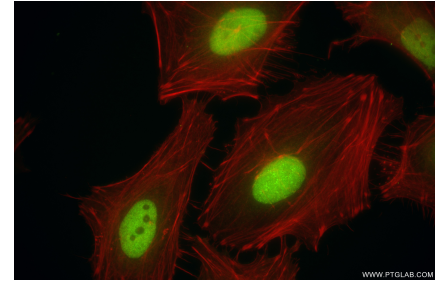
Selected Validation Data



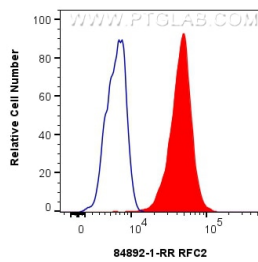
Various lysates were subjected to SDS PAGE followed by western blot with 84892-1-RR (RFC2 antibody) at dilution of 1:10000 incubated at room temperature for 1.5 hours.



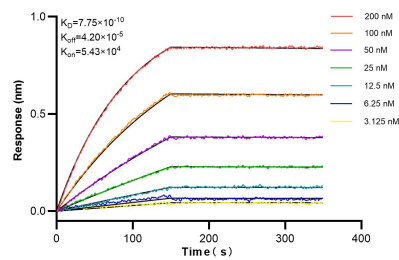
Immunohistochemical analysis of paraffin-embedded mouse ovary tissue slide using 84892-1-RR (RFC2 antibody) at dilution of 1:1000 (under 10x lens). Heat mediated antigen retrieval with Tris-EDTA buffer (pH 9.0).



Immunofluorescent analysis of (4% PFA) fixed HeLa cells using RFC2 antibody (84892-1-RR, Clone: 242503E12) at dilution of 1:500 and CoraLite®488-Conjugated Goat Anti-Rabbit IgG(H+L) (SA00013-2), CL594-Phalloidin (red).



1×10^6 HeLa cells were intracellularly stained with 0.25 μ g RFC2 Recombinant antibody (84892-1-RR, Clone:242503E12) and CoraLite®488-Conjugated Goat Anti-Rabbit IgG(H+L) (SA00013-2)(red), or 0.25 μ g Rabbit IgG Isotype Control RecAb (98136-1-RR, Clone: 240953C9) (blue). Cells were fixed and permeabilized with Transcription Factor Staining Buffer Kit (PF00011).



Biolayer interferometry (BLI) kinetic assays of 84892-1-RR against Human RFC2 were performed. The affinity constant is 0.775 nM.