

For Research Use Only

Component C9 Recombinant antibody, PBS Only (Capture/Detector)

Catalog Number: 84890-3-PBS



Basic Information

Catalog Number: 84890-3-PBS	GenBank Accession Number: NM_001737.4	Purification Method: Protein A purification
Size: 100ug, Concentration: 1 mg/ml by Nanodrop;	GeneID (NCBI): 735	CloneNo.: 242475F3
Source: Rabbit	UNIPROT ID: P02748	
Isotype: IgG	Full Name: complement component 9	
	Calculated MW: 63kDa	

Applications

Tested Applications:
Cytometric bead array, Sandwich ELISA, Indirect ELISA,
Sample test

Species Specificity:
human

Product Information

84890-3-PBS targets Component C9 as part of a matched antibody pair:

MP01620-1: 84890-3-PBS capture and 84890-1-PBS detection (validated in Cytometric bead array)

MP01620-2: 84890-2-PBS capture and 84890-3-PBS detection (validated in Cytometric bead array)

MP01620-3: 84890-5-PBS capture and 84890-3-PBS detection (validated in Sandwich ELISA)

Unconjugated rabbit recombinant monoclonal antibody in PBS only (BSA and azide free) storage buffer at a concentration of 1 mg/mL, ready for conjugation. Created using Proteintech's proprietary in-house recombinant technology. Recombinant production enables unrivalled batch-to-batch consistency, easy scale-up, and future security of supply.

This conjugation ready format makes antibodies ideal for use in many applications including: ELISAs, multiplex assays requiring matched pairs, mass cytometry, and multiplex imaging applications. Antibody use should be optimized by the end user for each application and assay.

Storage

Storage:
Store at -80°C.

Storage Buffer:
PBS Only

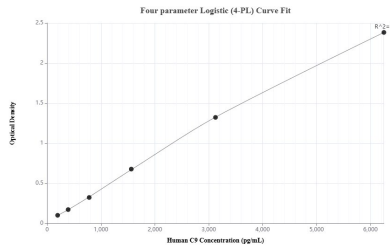
For technical support and original validation data for this product please contact:

T: 1 (888) 4PTGLAB (1-888-478-4522) (toll free
in USA), or 1(312) 455-8498 (outside USA)

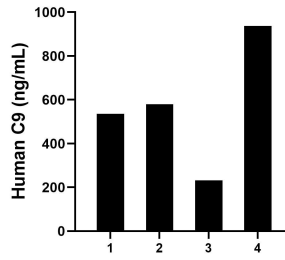
E: proteintech@ptglab.com
W: ptglab.com

This product is exclusively available under Proteintech Group brand and is not available to purchase from any other manufacturer.

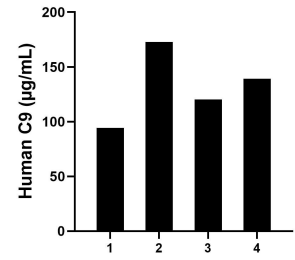
Selected Validation Data



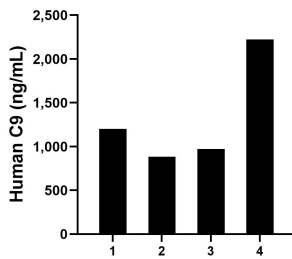
Sandwich ELISA standard curve of MP01620-3, Human C9 Recombinant Matched Antibody Pair - PBS only. 84890-5-PBS was coated to a plate as the capture antibody and incubated with serial dilutions of standard Eg1282. 84890-3-PBS was HRP conjugated as the detection antibody. Range: 195.3-6250 µg/mL



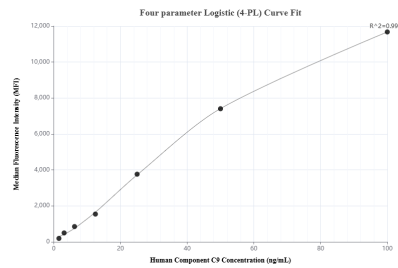
Human milk of four individual healthy human donors was measured. The human C9 concentration of detected samples was determined to be 570.94 ng/mL with a range of 230.92 - 937.80 ng/mL



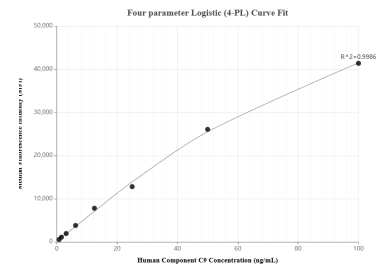
Serum of four individual healthy human donors was measured. The human C9 concentration of detected samples was determined to be 131.61 µg/mL with a range of 94.28 - 172.80 µg/mL



Tears of four individual healthy human donors was measured. The human C9 concentration of detected samples was determined to be 1,320.67 ng/mL with a range of 882.22 - 2,224.25 ng/mL



Cytometric bead array standard curve of MP01620-2, Component C9 Recombinant Matched Antibody Pair, PBS Only. Capture antibody: 84890-2-PBS. Detection antibody: 84890-3-PBS. Standard: Eg1282. Range: 0.781-100 ng/mL



Cytometric bead array standard curve of MP01620-1, Component C9 Recombinant Matched Antibody Pair, PBS Only. Capture antibody: 84890-3-PBS. Detection antibody: 84890-1-PBS. Standard: Eg1282. Range: 0.781-100 ng/mL