

For Research Use Only

PLSCR1 Recombinant antibody, PBS Only

Catalog Number: 84888-4-PBS



Basic Information

Catalog Number: 84888-4-PBS	GenBank Accession Number: BC021100	Purification Method: Protein A purification
Size: 100ug, Concentration: 1 mg/ml by Nanodrop;	GeneID (NCBI): 5359	CloneNo.: 242372B2
Source: Rabbit	UNIPROT ID: O15162	
Isotype: IgG	Full Name: phospholipid scramblase 1	
Immunogen Catalog Number: AG2172	Calculated MW: 318 aa, 35 kDa	
	Observed MW: 34 kDa	

Applications

Tested Applications:
WB, Indirect ELISA

Species Specificity:
human

Background Information

PLSCR1 (Phospholipid scramblase 1) is a member of the family of membrane proteins that mediate the transbilayer movement of phospholipids ("scrambling") in a Ca²⁺ dependent manner, which was identified as an a type II transmembrane protein involved in the calcium-dependent, nonspecific, rapid redistribution of phospholipids. A cysteine-rich palmitoylation motif [184CCPCC189] of PLSCR1, a thioester linkage to the sulfhydryl groups of cysteines, controls the transportation of PLSCR1 to the cell membrane or nucleus (PMID: 32292520). PLSCR1 is strongly expressed in response to interferon (IFN) treatment and viral infection (PMID: 35138119, 23487022).

Storage

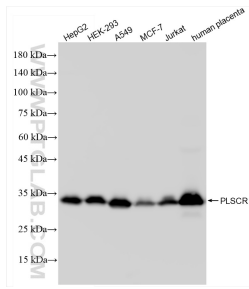
Storage:
Store at -80°C.

Storage Buffer:
PBS Only

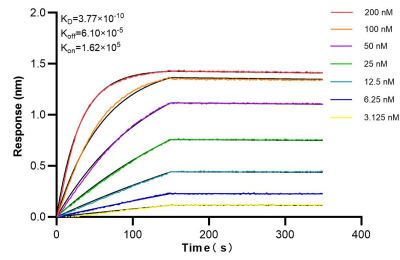
For technical support and original validation data for this product please contact:
T: 1 (888) 4PTGLAB (1-888-478-4522) (toll free in USA), or 1(312) 455-8498 (outside USA) E: proteintech@ptglab.com W: ptglab.com

This product is exclusively available under Proteintech Group brand and is not available to purchase from any other manufacturer.

Selected Validation Data



Various lysates were subjected to SDS PAGE followed by western blot with 84888-4-RR (PLSCR1 antibody) at dilution of 1:10000 incubated at room temperature for 1.5 hours. This data was developed using the same antibody clone with 84888-4-PBS in a different storage buffer formulation.



Biolayer interferometry (BLI) kinetic assays of 84888-4-RR against Human PLSCR1 were performed. The affinity constant is 0.377 nM.