

For Research Use Only

PLSCR1 Recombinant antibody, PBS Only (Capture)

Catalog Number: 84888-1-PBS



Basic Information

Catalog Number: 84888-1-PBS	GenBank Accession Number: BC021100	Purification Method: Protein A purification
Size: 100ug, Concentration: 1 mg/ml by Nanodrop;	GeneID (NCBI): 5359	CloneNo.: 242372B1
Source: Rabbit	UNIPROT ID: O15162	
Isotype: IgG	Full Name: phospholipid scramblase 1	
Immunogen Catalog Number: AG2172	Calculated MW: 318 aa, 35 kDa	

Applications

Tested Applications:
Cytometric bead array, Sandwich ELISA, Indirect ELISA, Sample test

Species Specificity:
human

Product Information

84888-1-PBS targets PLSCR1 as part of a matched antibody pair:

MP01664-2: 84888-1-PBS capture and 84888-3-PBS detection (validated in Cytometric bead array)

MP01664-3: 84888-1-PBS capture and 84888-5-PBS detection (validated in Sandwich ELISA)

Unconjugated rabbit recombinant monoclonal antibody in PBS only (BSA and azide free) storage buffer at a concentration of 1 mg/mL, ready for conjugation. Created using Proteintech's proprietary in-house recombinant technology. Recombinant production enables unrivalled batch-to-batch consistency, easy scale-up, and future security of supply.

This conjugation ready format makes antibodies ideal for use in many applications including: ELISAs, multiplex assays requiring matched pairs, mass cytometry, and multiplex imaging applications. Antibody use should be optimized by the end user for each application and assay.

Storage

Storage:
Store at -80°C.
Storage Buffer:
PBS Only

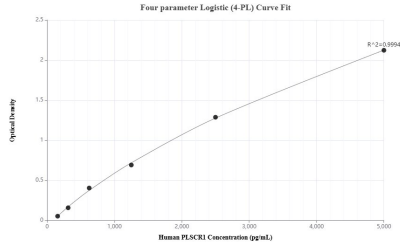
For technical support and original validation data for this product please contact:

T: 1 (888) 4PTGLAB (1-888-478-4522) (toll free in USA), or 1(312) 455-8498 (outside USA)

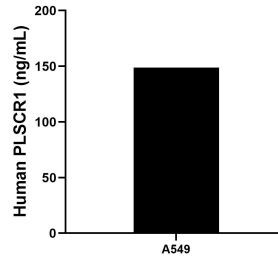
E: proteintech@ptglab.com
W: ptglab.com

This product is exclusively available under Proteintech Group brand and is not available to purchase from any other manufacturer.

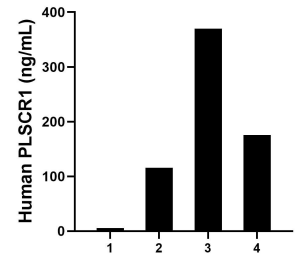
Selected Validation Data



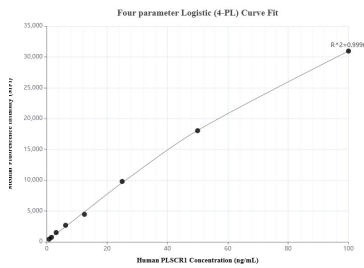
Sandwich ELISA standard curve of MP01664-3, Human PLSCR1 Recombinant Matched Antibody Pair - PBS only. 84888-1-PBS was coated to a plate as the capture antibody and incubated with serial dilutions of standard Ag2172. 84888-5-PBS was HRP conjugated as the detection antibody. Range: 156.3-5000 pg/mL



The mean PLSCR1 concentration was determined to be 148.88 ng/mL in A549 cell extract based on a 2.0 mg/mL extract load.



Urine of four individual healthy human donors was measured. The human PLSCR1 concentration of detected samples was determined to be 166.67 ng/mL with a range of 5.59 - 369.55 ng/mL.



Cytometric bead array standard curve of MP01664-2, PLSCR1 Recombinant Matched Antibody Pair, PBS Only. Capture antibody: 84888-1-PBS. Detection antibody: 84888-3-PBS. Standard: Ag2172. Range: 0.781-100 ng/mL