

For Research Use Only

# Glutamate receptor 3/GluA3 Recombinant antibody

Catalog Number: 84885-4-RR



## Basic Information

<b>Catalog Number:</b> 84885-4-RR	<b>GenBank Accession Number:</b> NM_007325	<b>Purification Method:</b> Protein A purification
<b>Size:</b> 100ul , Concentration: 1000 ug/ml by Nanodrop;	<b>GeneID (NCBI):</b> 2892	<b>CloneNo.:</b> 242392C11
<b>Source:</b> Rabbit	<b>UNIPROT ID:</b> P42263	<b>Recommended Dilutions:</b> WB 1:5000-1:50000 IHC 1:500-1:2000 IF-P 1:50-1:500
<b>Isotype:</b> IgG	<b>Full Name:</b> glutamate receptor, ionotropic, AMPA 3	
<b>Immunogen Catalog Number:</b> AG30898	<b>Calculated MW:</b> 101 kDa	
	<b>Observed MW:</b> 101 kDa	

## Applications

<b>Tested Applications:</b> WB, IHC, IF-P, ELISA	<b>Positive Controls:</b>
<b>Species Specificity:</b> human, mouse, rat	<b>WB :</b> mouse brain tissue, rat brain tissue
<b>Note-IHC: suggested antigen retrieval with TE buffer pH 9.0; (*) Alternatively, antigen retrieval may be performed with citrate buffer pH 6.0</b>	<b>IHC :</b> mouse brain tissue,
	<b>IF-P :</b> mouse brain tissue,

## Background Information

Glutamate receptors are the predominant excitatory neurotransmitter receptors in the mammalian brain and are activated in a variety of normal neurophysiologic processes. GRIA3 (Glutamate ionotropic receptor AMPA type subunit 3), also known as Glutamate receptor R3 or A3 (GluR3 or GluA3), is associated with X-linked intellectual disability (ID), dysmorphic features, and non-syndromic epilepsy(PMID: 32977175). GRIA3 also plays a role as a mediator of tumor progression in pancreatic cancer downstream CUX1(PMID: 20689760).

## Storage

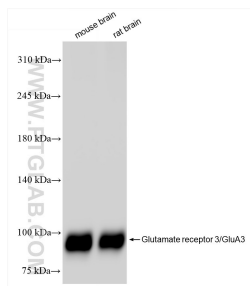
**Storage:**  
Store at -20°C. Stable for one year after shipment.  
**Storage Buffer:**  
PBS with 0.02% sodium azide and 50% glycerol  
**Aliquoting is unnecessary for -20°C storage**

\*\*\* 20ul sizes contain 0.1% BSA

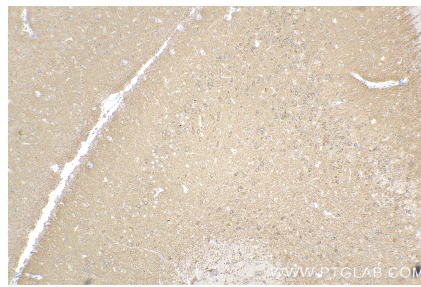
For technical support and original validation data for this product please contact:  
T: 1 (888) 4PTGLAB (1-888-478-4522) (toll free in USA), or 1(312) 455-8498 (outside USA)  
E: [proteintech@ptglab.com](mailto:proteintech@ptglab.com)  
W: [ptglab.com](http://ptglab.com)

This product is exclusively available under Proteintech Group brand and is not available to purchase from any other manufacturer.

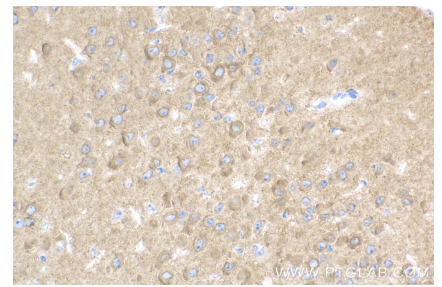
## Selected Validation Data



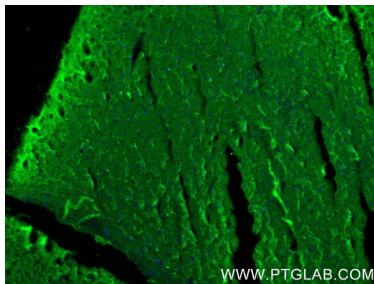
Various lysates were subjected to SDS PAGE followed by western blot with 84885-4-RR (Glutamate receptor 3/GluA3 antibody) at dilution of 1:10000 incubated at room temperature for 1.5 hours.



Immunohistochemical analysis of paraffin-embedded mouse brain tissue slide using 84885-4-RR (Glutamate receptor 3/GluA3 antibody) at dilution of 1:1000 (under 10x lens). Heat mediated antigen retrieval with Tris-EDTA buffer (pH 9.0).



Immunohistochemical analysis of paraffin-embedded mouse brain tissue slide using 84885-4-RR (Glutamate receptor 3/GluA3 antibody) at dilution of 1:1000 (under 40x lens). Heat mediated antigen retrieval with Tris-EDTA buffer (pH 9.0).



Immunofluorescent analysis of (4% PFA) fixed paraffin-embedded mouse brain tissue using Glutamate receptor 3/GluA3 antibody (84885-4-RR, Clone: 242392C11) at dilution of 1:200 and CoraLite®488-Conjugated Goat Anti-Rabbit IgG(H+L) (SA00013-2). Heat mediated antigen retrieval with Tris-EDTA buffer (pH 9.0).