

For Research Use Only

Glutamate receptor 3/GluA3 Recombinant antibody, PBS Only

Catalog Number: 84885-4-PBS



Basic Information

Catalog Number: 84885-4-PBS	GenBank Accession Number: NM_007325	Purification Method: Protein A purification
Size: 100ug, Concentration: 1 mg/ml by Nanodrop;	GeneID (NCBI): 2892	CloneNo.: 242392C11
Source: Rabbit	UNIPROT ID: P42263	
Isotype: IgG	Full Name: glutamate receptor, ionotropic, AMPA 3	
Immunogen Catalog Number: AG30898	Calculated MW: 101 kDa	
	Observed MW: 101 kDa	

Applications

Tested Applications:
WB, IHC, IF-P, Indirect ELISA

Species Specificity:
human, mouse, rat

Background Information

Glutamate receptors are the predominant excitatory neurotransmitter receptors in the mammalian brain and are activated in a variety of normal neurophysiologic processes. GRIA3 (Glutamate ionotropic receptor AMPA type subunit 3), also known as Glutamate receptor R3 or A3 (GluR3 or GluA3), is associated with X-linked intellectual disability (ID), dysmorphic features, and non-syndromic epilepsy (PMID: 32977175). GRIA3 also plays a role as a mediator of tumor progression in pancreatic cancer downstream CUX1 (PMID: 20689760).

Storage

Storage:
Store at -80°C.

Storage Buffer:
PBS only

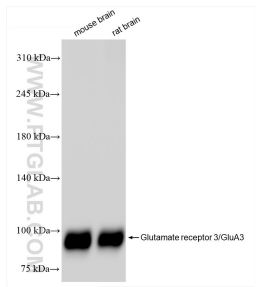
For technical support and original validation data for this product please contact:

T: 1 (888) 4PTGLAB (1-888-478-4522) (toll free in USA), or 1(312) 455-8498 (outside USA)

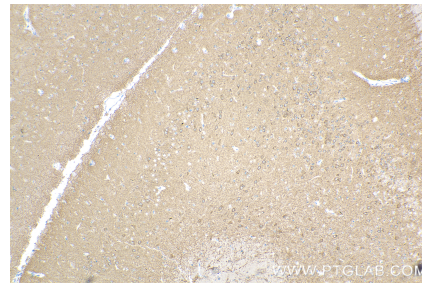
E: proteintech@ptglab.com
W: ptglab.com

This product is exclusively available under Proteintech Group brand and is not available to purchase from any other manufacturer.

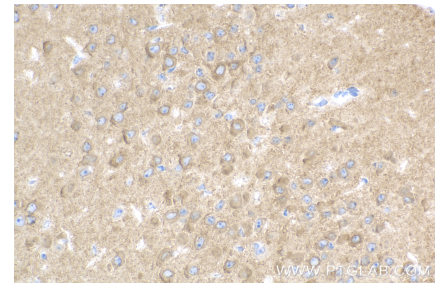
Selected Validation Data



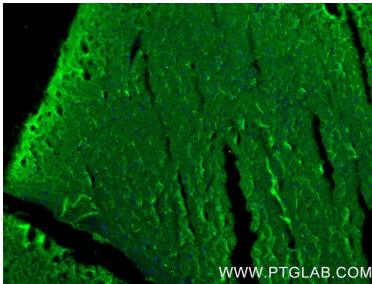
Various lysates were subjected to SDS PAGE followed by western blot with 84885-4-RR (Glutamate receptor 3/GluA3 antibody) at dilution of 1:10000 incubated at room temperature for 1.5 hours. This data was developed using the same antibody clone with 84885-4-PBS in a different storage buffer formulation.



Immunohistochemical analysis of paraffin-embedded mouse brain tissue slide using 84885-4-RR (Glutamate receptor 3/GluA3 antibody) at dilution of 1:1000 (under 10x lens). Heat mediated antigen retrieval with Tris-EDTA buffer (pH 9.0). This data was developed using the same antibody clone with 84885-4-PBS in a different storage buffer formulation.



Immunohistochemical analysis of paraffin-embedded mouse brain tissue slide using 84885-4-RR (Glutamate receptor 3/GluA3 antibody) at dilution of 1:1000 (under 40x lens). Heat mediated antigen retrieval with Tris-EDTA buffer (pH 9.0). This data was developed using the same antibody clone with 84885-4-PBS in a different storage buffer formulation.



Immunofluorescent analysis of (4% PFA) fixed paraffin-embedded mouse brain tissue using Glutamate receptor 3/GluA3 antibody (84885-4-RR, Clone: 242392C11) at dilution of 1:200 and CoraLite@488-Conjugated Goat Anti-Rabbit IgG(H+L) (SA00013-2). Heat mediated antigen retrieval with Tris-EDTA buffer (pH 9.0). This data was developed using the same antibody clone with 84885-4-PBS in a different storage buffer formulation.