

For Research Use Only

MTHFD1 Recombinant antibody, PBS Only (Detector)

Catalog Number: 84884-2-PBS



Basic Information

Catalog Number:

84884-2-PBS

Size:

100ug, Concentration: 1 mg/ml by Nanodrop;

Source:

Rabbit

Isotype:

IgG

Immunogen Catalog Number:

AG1225

GenBank Accession Number:

BC009806

GeneID (NCBI):

4522

UNIPROT ID:

P11586

Full Name:

methylenetetrahydrofolate dehydrogenase (NADP+ dependent) 1, methenyltetrahydrofolate cyclohydrolase, formyltetrahydrofolate synthetase

Calculated MW:

101 kDa

Purification Method:

Protein A purification

CloneNo.:

242388C7

Applications

Tested Applications:

Cytometric bead array, Sandwich ELISA, Indirect ELISA, Sample test

Species Specificity:

human

Product Information

84884-2-PBS targets MTHFD1 as part of a matched antibody pair:

MP01654-1: 84884-1-PBS capture and 84884-2-PBS detection (validated in Cytometric bead array)

MP01654-2: 84884-3-PBS capture and 84884-2-PBS detection (validated in Cytometric bead array)

MP01654-3: 84884-4-PBS capture and 84884-2-PBS detection (validated in Sandwich ELISA)

Unconjugated rabbit recombinant monoclonal antibody in PBS only (BSA and azide free) storage buffer at a concentration of 1 mg/mL, ready for conjugation. Created using Proteintech's proprietary in-house recombinant technology. Recombinant production enables unrivalled batch-to-batch consistency, easy scale-up, and future security of supply.

This conjugation ready format makes antibodies ideal for use in many applications including: ELISAs, multiplex assays requiring matched pairs, mass cytometry, and multiplex imaging applications. Antibody use should be optimized by the end user for each application and assay.

Storage

Storage:

Store at -80°C.

Storage Buffer:

PBS Only

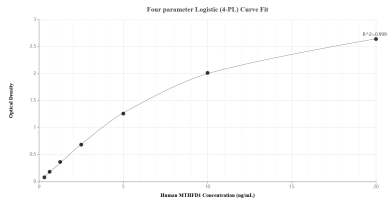
For technical support and original validation data for this product please contact:

T: 1 (888) 4PTGLAB (1-888-478-4522) (toll free in USA), or 1(312) 455-8498 (outside USA)

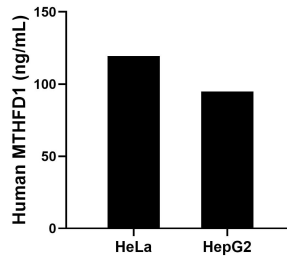
E: proteintech@ptglab.com
W: ptglab.com

This product is exclusively available under Proteintech Group brand and is not available to purchase from any other manufacturer.

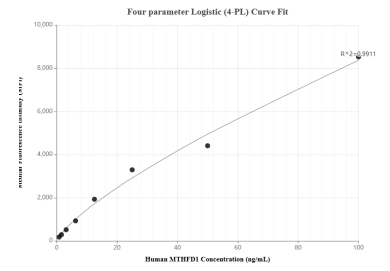
Selected Validation Data



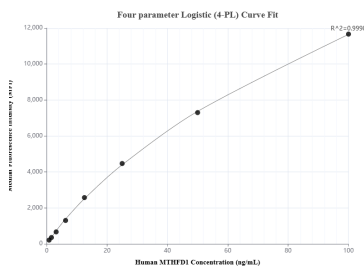
Sandwich ELISA standard curve of MP01654-3, Human MTHFD1 Recombinant Matched Antibody Pair - PBS only. 84884-4-PBS was coated to a plate as the capture antibody and incubated with serial dilutions of standard Ag1225. 84884-2-PBS was HRP conjugated as the detection antibody. Range: 0.313-20 ng/mL



The mean MTHFD1 concentration was determined to be 119.48 ng/mL in HeLa cell extract based on a 1.00 mg/mL extract load and 94.90 ng/mL in HepG2 cell extract based on a 2.30 mg/mL extract load.



Cytometric bead array standard curve of MP01654-2, MTHFD1 Recombinant Matched Antibody Pair, PBS Only. Capture antibody: 84884-3-PBS. Detection antibody: 84884-2-PBS. Standard: Ag1225. Range: 0.781-100 ng/mL



Cytometric bead array standard curve of MP01654-1, MTHFD1 Recombinant Matched Antibody Pair, PBS Only. Capture antibody: 84884-1-PBS. Detection antibody: 84884-2-PBS. Standard: Ag1225. Range: 0.781-100 ng/mL