

For Research Use Only

BCL3 Recombinant antibody

Catalog Number: 84882-5-RR



Basic Information

Catalog Number: 84882-5-RR	GenBank Accession Number: BC064993	Purification Method: Protein A purification
Size: 100ul , Concentration: 1000 µg/ml by Nanodrop;	GeneID (NCBI): 602	CloneNo.: 242233B11
Source: Rabbit	UNIPROT ID: P20749	Recommended Dilutions: IHC 1:50-1:500 IF/ICC 1:200-1:800
Isotype: IgG	Full Name: B-cell CLL/lymphoma 3	
Immunogen Catalog Number: AG13375	Calculated MW: 446 aa, 47 kDa	
	Observed MW: 48-60 kDa	

Applications

Tested Applications:

IHC, IF/ICC, ELISA

Species Specificity:

human, mouse

Note-IHC: suggested antigen retrieval with TE buffer pH 9.0; (*) Alternatively, antigen retrieval may be performed with citrate buffer pH 6.0

Positive Controls:

IHC : mouse spleen tissue,

IF/ICC : HeLa cells, HepG2 cells

Background Information

BCL3 (BCL3 Transcription Coactivator), as a Protein Coding gene, has seven ankyrin repeat domains, a proline-rich N terminal domain and a serine- and proline-rich C-terminal domain(PMID: 31930327). BCL3 is an important contributor to chronic inflammatory disease states, such as osteoarthritis and rheumatoid arthritis. In the cytoplasm, BCL3 inhibits the nuclear translocation of the NF-kappa-B p50 subunit. In the nucleus, BCL3 acts as transcriptional activator that promotes transcription of NF-kappa-B target genes(Uniprot).

Storage

Storage:

Store at -20°C. Stable for one year after shipment.

Storage Buffer:

PBS with 0.02% sodium azide and 50% glycerol pH 7.3.

Aliquoting is unnecessary for -20°C storage

*** 20ul sizes contain 0.1% BSA

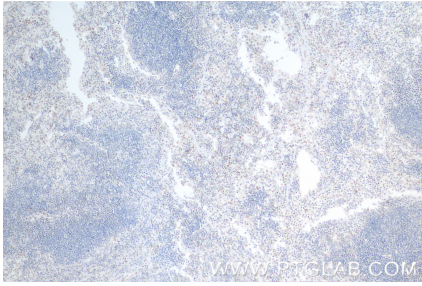
For technical support and original validation data for this product please contact:

T: 1 (888) 4PTGLAB (1-888-478-4522) (toll free in USA), or 1(312) 455-8498 (outside USA)

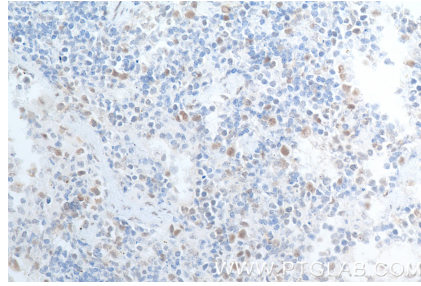
E: proteintech@ptglab.com
W: ptglab.com

This product is exclusively available under Proteintech Group brand and is not available to purchase from any other manufacturer.

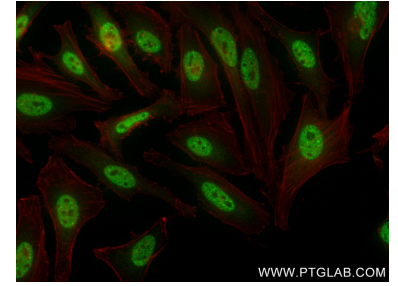
Selected Validation Data



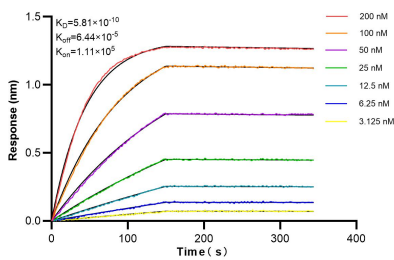
Immunohistochemical analysis of paraffin-embedded mouse spleen tissue slide using 84882-5-RR (BCL3 antibody) at dilution of 1:200 (under 10x lens). Heat mediated antigen retrieval with Tris-EDTA buffer (pH 9.0).



Immunohistochemical analysis of paraffin-embedded mouse spleen tissue slide using 84882-5-RR (BCL3 antibody) at dilution of 1:200 (under 40x lens). Heat mediated antigen retrieval with Tris-EDTA buffer (pH 9.0).



Immunofluorescent analysis of (4% PFA) fixed HeLa cells using BCL3 antibody (84882-5-RR, Clone: 242233B11) at dilution of 1:400 and CoraLite®488-Conjugated Goat Anti-Rabbit IgG(H+L) (SA00013-2), CL594-Phalloidin (red).



Biolayer interferometry (BLI) kinetic assays of 84882-5-RR against Human BCL3 were performed. The affinity constant is 0.581 nM.