

For Research Use Only

# BCL3 Recombinant antibody, PBS Only

Catalog Number: 84882-5-PBS



## Basic Information

<b>Catalog Number:</b> 84882-5-PBS	<b>GenBank Accession Number:</b> BC064993	<b>Purification Method:</b> Protein A purification
<b>Size:</b> 100ug, Concentration: 1 mg/ml by Nanodrop;	<b>GeneID (NCBI):</b> 602	<b>CloneNo.:</b> 242233B11
<b>Source:</b> Rabbit	<b>UNIPROT ID:</b> P20749	
<b>Isotype:</b> IgG	<b>Full Name:</b> B-cell CLL/lymphoma 3	
<b>Immunogen Catalog Number:</b> AG13375	<b>Calculated MW:</b> 446 aa, 47 kDa	
	<b>Observed MW:</b> 48-60 kDa	

## Applications

**Tested Applications:**  
IHC, IF/ICC, Indirect ELISA

**Species Specificity:**  
human, mouse

## Background Information

BCL3 (BCL3 Transcription Coactivator), as a Protein Coding gene, has seven ankyrin repeat domains, a proline-rich N terminal domain and a serine- and proline-rich C-terminal domain (PMID: 31930327). BCL3 is an important contributor to chronic inflammatory disease states, such as osteoarthritis and rheumatoid arthritis. In the cytoplasm, BCL3 inhibits the nuclear translocation of the NF-kappa-B p50 subunit. In the nucleus, BCL3 acts as transcriptional activator that promotes transcription of NF-kappa-B target genes (Uniprot).

## Storage

**Storage:**  
Store at -80°C.

**Storage Buffer:**  
PBS Only

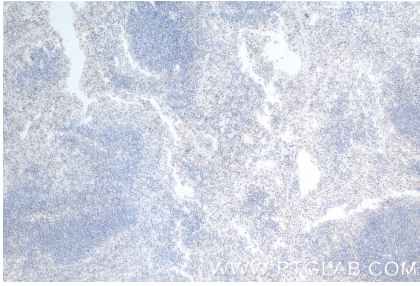
For technical support and original validation data for this product please contact:

T: 1 (888) 4PTGLAB (1-888-478-4522) (toll free in USA), or 1(312) 455-8498 (outside USA)

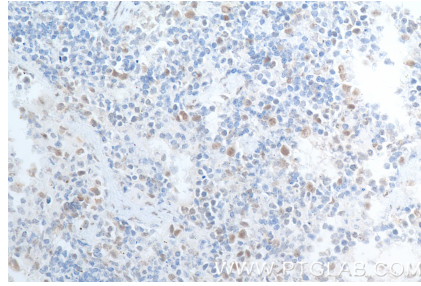
E: [proteintech@ptglab.com](mailto:proteintech@ptglab.com)  
W: [ptglab.com](http://ptglab.com)

**This product is exclusively available under Proteintech Group brand and is not available to purchase from any other manufacturer.**

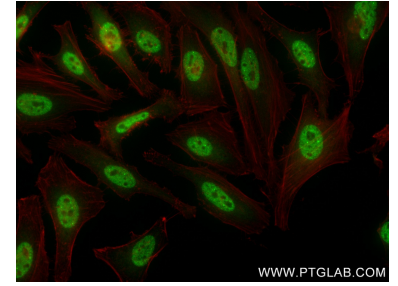
## Selected Validation Data



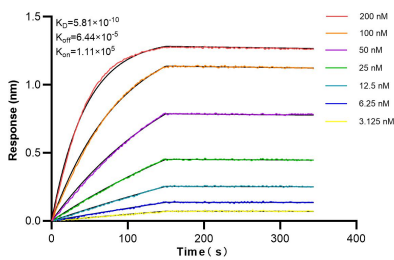
Immunohistochemical analysis of paraffin-embedded mouse spleen tissue slide using 84882-5-RR (BCL3 antibody) at dilution of 1:200 (under 10x lens). Heat mediated antigen retrieval with Tris-EDTA buffer (pH 9.0). This data was developed using the same antibody clone with 84882-5-PBS in a different storage buffer formulation.



Immunohistochemical analysis of paraffin-embedded mouse spleen tissue slide using 84882-5-RR (BCL3 antibody) at dilution of 1:200 (under 40x lens). Heat mediated antigen retrieval with Tris-EDTA buffer (pH 9.0). This data was developed using the same antibody clone with 84882-5-PBS in a different storage buffer formulation.



Immunofluorescent analysis of (4% PFA) fixed HeLa cells using BCL3 antibody (84882-5-RR, Clone: 242233B11) at dilution of 1:400 and CoraLite® 488-Conjugated Goat Anti-Rabbit IgG(H+L) (SA00013-2), CL594-Phalloidin (red). This data was developed using the same antibody clone with 84882-5-PBS in a different storage buffer formulation.



Biolayer interferometry (BLI) kinetic assays of 84882-5-RR against Human BCL3 were performed. The affinity constant is 0.581 nM.