

For Research Use Only

Choline Kinase Alpha Recombinant antibody, PBS Only (Detector)

Catalog Number: 84881-2-PBS



Basic Information

Catalog Number: 84881-2-PBS	GenBank Accession Number: BC036471	Purification Method: Protein A purification
Size: 100ug, Concentration: 1 mg/ml by Nanodrop;	GeneID (NCBI): 1119	CloneNo.: 242095B4
Source: Rabbit	UNIPROT ID: P35790	
Isotype: IgG	Full Name: choline kinase alpha	
Immunogen Catalog Number: AG4761	Calculated MW: 439 aa, 52 kDa	
	Observed MW: 50 kDa	

Applications

Tested Applications:
WB, Cytometric bead array, Indirect ELISA

Species Specificity:
human

Product Information

84881-2-PBS targets Choline Kinase Alpha as part of a matched antibody pair:

MP01644-2: 84881-1-PBS capture and 84881-2-PBS detection (validated in Cytometric bead array)

Unconjugated rabbit recombinant monoclonal antibody in PBS only (BSA and azide free) storage buffer at a concentration of 1 mg/mL, ready for conjugation. Created using Proteintech's proprietary in-house recombinant technology. Recombinant production enables unrivalled batch-to-batch consistency, easy scale-up, and future security of supply.

This conjugation ready format makes antibodies ideal for use in many applications including: ELISAs, multiplex assays requiring matched pairs, mass cytometry, and multiplex imaging applications. Antibody use should be optimized by the end user for each application and assay.

Background Information

Choline kinase alpha, also named as CHK, CKI and CK, belongs to the choline/ethanolamine kinase family. CHKa may have a regulatory role in phosphatidylcholine synthesis. CHKA catalyze the reaction: ATP + choline = ADP + O-phosphocholine. The human enzyme resembled the rat liver enzyme over the entire sequence. It also resembled the yeast enzyme in the carboxy-terminal region, but not in the amino-terminal region (PMID:1618328). And it expresses in human brain tissue but not in human skeletal muscle (PMID:21665002). It has 2 isoforms produced by alternative splicing.

Storage

Storage:
Store at -80°C.
Storage Buffer:
PBS Only

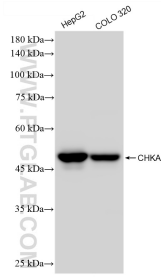
For technical support and original validation data for this product please contact:

T: 1 (888) 4PTGLAB (1-888-478-4522) (toll free in USA), or 1(312) 455-8498 (outside USA)

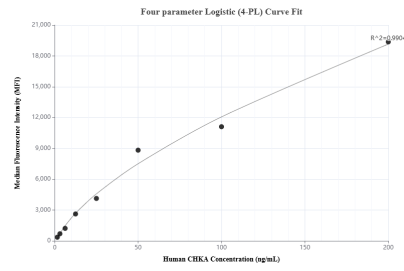
E: proteintech@ptglab.com
W: ptglab.com

This product is exclusively available under Proteintech Group brand and is not available to purchase from any other manufacturer.

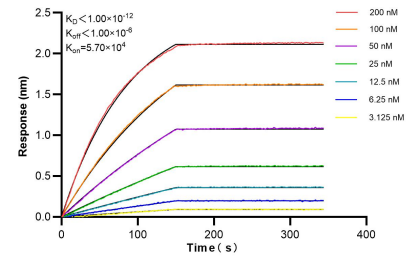
Selected Validation Data



Various lysates were subjected to SDS PAGE followed by western blot with 84881-2-RR (CHKA antibody) at dilution of 1:10000 incubated at room temperature for 1.5 hours. This data was developed using the same antibody clone with 84881-2-PBS in a different storage buffer formulation.



Cytometric bead array standard curve of MP01644-2, CHKA Recombinant Matched Antibody Pair, PBS Only. Capture antibody: 84881-1-PBS. Detection antibody: 84881-2-PBS. Standard: Ag4761. Range: 1.563-200 ng/mL



Bi-layer interferometry (BLI) kinetic assays of 84881-2-RR against Human CHKA were performed. The affinity constant is below 1 pM.