

For Research Use Only

# WAPL Recombinant antibody

Catalog Number: 84877-5-RR



## Basic Information

<b>Catalog Number:</b> 84877-5-RR	<b>GenBank Accession Number:</b> BC017393	<b>Purification Method:</b> Protein A purification
<b>Size:</b> 100ul , Concentration: 1000 µg/ml by Nanodrop;	<b>GeneID (NCBI):</b> 23063	<b>CloneNo.:</b> 242443C1
<b>Source:</b> Rabbit	<b>UNIPROT ID:</b> Q7Z5K2	<b>Recommended Dilutions:</b> WB 1:5000-1:50000 IHC 1:250-1:1000 IF/ICC 1:200-1:800
<b>Isotype:</b> IgG	<b>Full Name:</b> wings apart-like homolog (Drosophila)	
<b>Immunogen Catalog Number:</b> AG9585	<b>Calculated MW:</b> 142 kDa	
	<b>Observed MW:</b> 160-180 kDa	

## Applications

**Tested Applications:**  
WB, IHC, IF/ICC, FC (Intra), ELISA

**Species Specificity:**  
human, mouse

**Note-IHC: suggested antigen retrieval with TE buffer pH 9.0; (\*) Alternatively, antigen retrieval may be performed with citrate buffer pH 6.0**

**Positive Controls:**

**WB:** U2OS cells, MCF-7 cells, K-562 cells, HepG2 cells, HeLa cells, HEK-293 cells

**IHC:** mouse skeletal muscle tissue,

**IF/ICC:** HepG2 cells,

## Background Information

The wings apart-like (WAPL or WAPAL) protein was originally identified as a gene product that potentially regulates heterochromatin organization in *Drosophila melanogaster*. Human WAPL is a cohesin-binding protein that promotes sister-chromatid resolution in mitotic prophase. Overexpression of WAPL disturbs mitosis and cytokinesis, and contributes to tumor progression by induction of chromosomal instability. WAPAL has a predicted molecular weight of 140 kDa, however, as a result of its extensive phosphorylation it separates on a SDS gel as a band of approximately 160-180 kDa.

## Storage

**Storage:**  
Store at -20°C. Stable for one year after shipment.  
**Storage Buffer:**  
PBS with 0.02% sodium azide and 50% glycerol pH 7.3.  
Aliquoting is unnecessary for -20°C storage

\*\*\* 20ul sizes contain 0.1% BSA

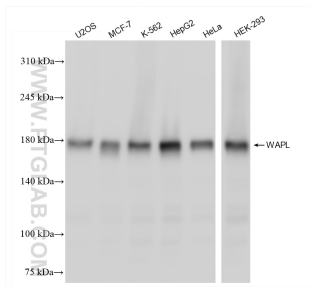
For technical support and original validation data for this product please contact:

T: 1 (888) 4PTGLAB (1-888-478-4522) (toll free in USA), or 1(312) 455-8498 (outside USA)

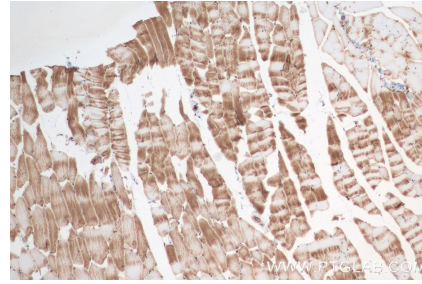
E: [proteintech@ptglab.com](mailto:proteintech@ptglab.com)  
W: [ptglab.com](http://ptglab.com)

This product is exclusively available under Proteintech Group brand and is not available to purchase from any other manufacturer.

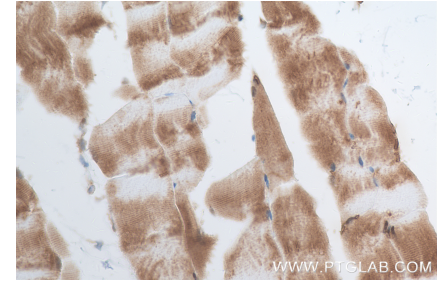
## Selected Validation Data



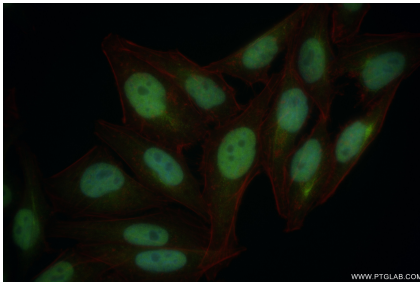
Various lysates were subjected to SDS PAGE followed by western blot with 84877-5-RR (WAPL antibody) at dilution of 1:20000 incubated at room temperature for 1.5 hours.



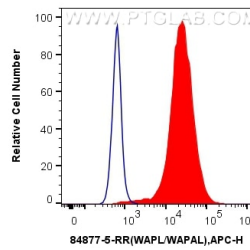
Immunohistochemical analysis of paraffin-embedded mouse skeletal muscle tissue slide using 84877-5-RR (WAPL antibody) at dilution of 1:500 (under 10x lens). Heat mediated antigen retrieval with Tris-EDTA buffer (pH 9.0).



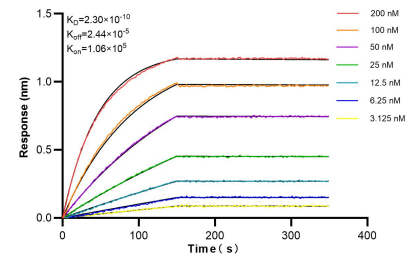
Immunohistochemical analysis of paraffin-embedded mouse skeletal muscle tissue slide using 84877-5-RR (WAPL antibody) at dilution of 1:500 (under 40x lens). Heat mediated antigen retrieval with Tris-EDTA buffer (pH 9.0).



Immunofluorescent analysis of (4% PFA) fixed HepG2 cells using WAPL antibody (84877-5-RR, Clone: 242443C1) at dilution of 1:400 and CoraLite@488-Conjugated Goat Anti-Rabbit IgG(H+L) (SA00013-2), CL594-Phalloidin (red).



$1 \times 10^6$  HeLa cells were intracellularly stained with 0.25  $\mu$ g WAPL Recombinant antibody (84877-5-RR, Clone: 242443C1) and APC-Conjugated Goat Anti-Rabbit IgG(H+L) (red), or 0.25  $\mu$ g Rabbit IgG Isotype Control RecAb (98136-1-RR, Clone: 240953C9) (blue). Cells were fixed with 4% PFA and permeabilized with Flow Cytometry Perm Buffer (PF00011-C).



Biolayer interferometry (BLI) kinetic assays of 84877-5-RR against Human WAPL were performed. The affinity constant is 0.23 nM.