

For Research Use Only

PISD Recombinant antibody, PBS Only (Detector)

Catalog Number: 84866-2-PBS



Basic Information

Catalog Number: 84866-2-PBS	GenBank Accession Number: BC001482	Purification Method: Protein A purification
Size: 100ug , Concentration: 1 mg/ml by Nanodrop;	GeneID (NCBI): 23761	CloneNo.: 242280C9
Source: Rabbit	UNIPROT ID: Q9UG56	
Isotype: IgG	Full Name: phosphatidylserine decarboxylase	
Immunogen Catalog Number: AG9499	Calculated MW: 375aa,43 kDa; 408aa,46 kDa	
	Observed MW: 46 kDa	

Applications

Tested Applications:
WB, Cytometric bead array, Sandwich ELISA, Indirect ELISA, Sample test

Species Specificity:
human, rat

Product Information

84866-2-PBS targets PISD as part of a matched antibody pair:

MP01640-1: 84866-1-PBS capture and 84866-2-PBS detection (validated in Cytometric bead array)

MP01640-2: 84866-3-PBS capture and 84866-2-PBS detection (validated in Sandwich ELISA)

Unconjugated rabbit recombinant monoclonal antibody in PBS only (BSA and azide free) storage buffer at a concentration of 1 mg/mL, ready for conjugation. Created using Proteintech's proprietary in-house recombinant technology. Recombinant production enables unrivalled batch-to-batch consistency, easy scale-up, and future security of supply.

This conjugation ready format makes antibodies ideal for use in many applications including: ELISAs, multiplex assays requiring matched pairs, mass cytometry, and multiplex imaging applications. Antibody use should be optimized by the end user for each application and assay.

Background Information

PISD(Phosphatidylserine decarboxylase proenzyme) belongs to the phosphatidylserine decarboxylase family. It contains a conserved LGST motif that functions as an autocatalytic cleavage site where the proenzyme is split into mature alpha and beta subunits. It has 2 isoforms produced by alternative splicing.

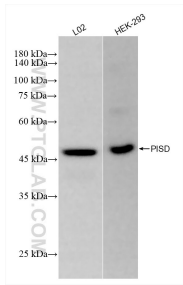
Storage

Storage:
Store at -80°C.
Storage Buffer:
PBS Only

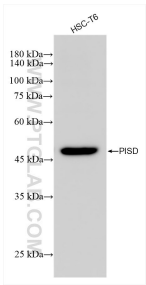
For technical support and original validation data for this product please contact:
T: 1 (888) 4PTGLAB (1-888-478-4522) (toll free in USA), or 1(312) 455-8498 (outside USA)
E: proteintech@ptglab.com
W: ptglab.com

This product is exclusively available under Proteintech Group brand and is not available to purchase from any other manufacturer.

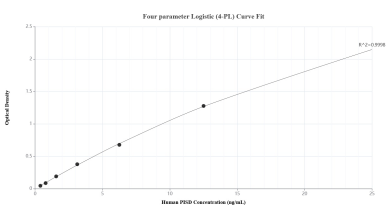
Selected Validation Data



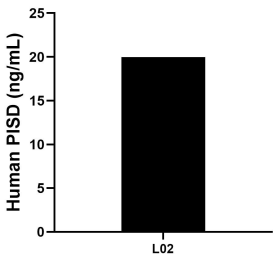
Various lysates were subjected to SDS PAGE followed by western blot with 84866-2-RR (PISD antibody) at dilution of 1:1000 incubated at room temperature for 1.5 hours. This data was developed using the same antibody clone with 84866-2-PBS in a different storage buffer formulation.



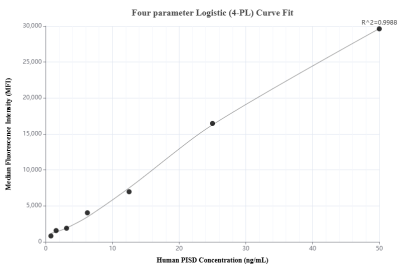
Various lysates were subjected to SDS PAGE followed by western blot with 84866-2-RR (PISD antibody) at dilution of 1:1000 incubated at room temperature for 1.5 hours. This data was developed using the same antibody clone with 84866-2-PBS in a different storage buffer formulation.



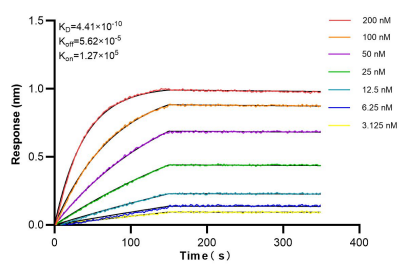
Sandwich ELISA standard curve of MP01640-2, Human PISD Recombinant Matched Antibody Pair - PBS only. 84866-3-PBS was coated to a plate as the capture antibody and incubated with serial dilutions of standard Ag9499. 84866-2-PBS was HRP conjugated as the detection antibody. Range: 0.391-25 ng/mL.



The mean PISD concentration was determined to be 19.97 ng/mL in L02 cell extract based on a 1.30 mg/mL extract load.



Cytometric bead array standard curve of MP01640-1, PISD Recombinant Matched Antibody Pair, PBS Only. Capture antibody: 84866-1-PBS. Detection antibody: 84866-2-PBS. Standard: Ag9499. Range: 0.781-50 ng/mL.



Biolayer interferometry (BLI) kinetic assays of 84866-2-RR against Human PISD were performed. The affinity constant is 0.441 nM.